



University of Kentucky[®]

Procurement Services

REQUEST FOR PROPOSALS

UK-2595-26

Bulk Oxygen and Liquid Nitrogen For UKHC

ADDENDUM #5

05/07/2026

ATTENTION: This is not an order. Read all instructions, terms, and conditions carefully.

IMPORTANT: RFP AND ADDENDUM MUST BE RECEIVED BY: 05/15/2026 @ 3:00 P.M. LEXINGTON, KY TIME

Offeror should acknowledge receipt of this, and any addendum as stated in the Request for Proposal.

ITEM #1: NOTICE TO OFFERORS

- The proposal "Due Date" has been extended to 05/15/2026. The time and location for submission of your proposal remains the same.

ITEM #2: QUESTIONS & ANSWERS

- Please incorporate the enclosed questions and answers, and additional information from the project team, into your proposal. We understand all the questions have not been answered and are working diligently to provide that information to potential offerors in a forthcoming addendum.
- Please reach out to Ken Scott at the 859.257.9102, or at Kenneth.Scott@uky.edu, if you have any questions.

OFFICIAL APPROVAL
UNIVERSITY OF KENTUCKY

05/07/2026

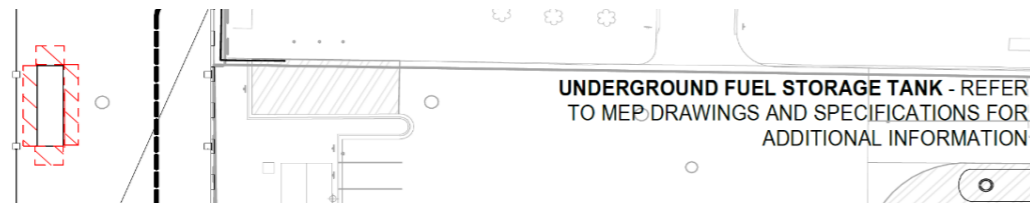
Ken Scott

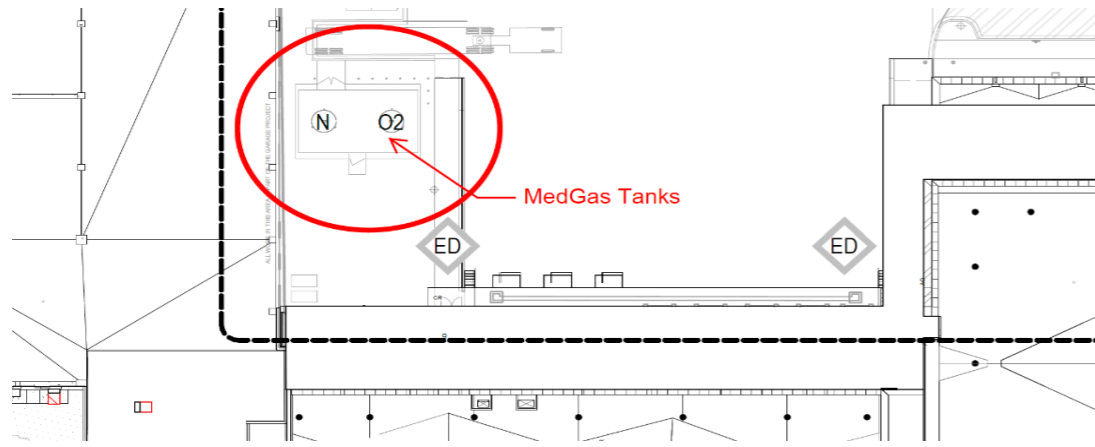
Ken Scott, Purchasing Officer

SIGNATURE

Typed or Printed Name

#	Date	Question	Responder	Response
1	3/27/2026	What is the anticipated volume for bulk oxygen and bulk nitrogen at UKHC Cancer Treatment Center & Ambulatory Care Center?		Refer to page# 34 in the RFP.
2		What is the delivery pressure at each facility? a. For example, Hyperbaric.	Lisa Wright	The chamber PSI is typically around 67-68 and drops to about 62 during a treatment. The boom oxygen psi usually is around 75-76, but we rarely us that one. Then we have the regular wall oxygen outlets that run around 53 psi
3		The property owner (University of Kentucky) is required to apply for an operational and construction permits per Kentucky Fire Code. Who will be handling the professional engineered drawings for permit submittals?		
4		Is the bidder required to supply the necessary infrastructure to install the cryogenic fluid system? Items such as concrete foundations, concrete spill pads, fencing/screening, vehicular protection, etc.		
5		Please confirm the proper credentials for installation technicians of a bulk medical gas system is ASSE 6015 or CGA M-1. The RFP lists ASSE 6010 installers which is for piped distribution systems.	Ken Scott	In Kentucky, bulk medical gas system installation technicians must hold an ASSE 6015 Medical Gas System Installer certification, meet strict experience requirements, and typically hold a journeyman plumber or pipefitter license. Proper installation requires compliance with NFPA 99/55, including specific brazing qualifications
6		Please confirm the proper credentials for a bulk medical gas verifier is ASSE 6035. The RFP lists ASSE 6030 which is for the piped distribution system.	Ken Scott	In Kentucky, as part of national NFPA 99 compliance, ASSE 6035 certification is required for personnel specifically verifying bulk medical gas and cryogenic fluid central supply systems. It is distinct from, but often held alongside, the ASSE 6030 Medical Gas Verifier certification, which covers the patient-side
7		Are we planning to reuse the existing bulk tank pads? If yes, are there existing drawings on the foundation?	Lisa Wright	Yes, for the existing systems at Chandler & GSH.
8		How are site surveys determined? How will these be scheduled with suppliers and time frame to complete? With the bid due on 4/17, can dates be provided as soon as possible to complete?	Ken Scott	These were conducted individually.
9		Will the new agreement be associated with a GPO?	Naomi Emmons	Unknown at this time.
10		Should the supplier anticipate any future growth at the University? If increased demand is expected, this may present an opportunity to assess current tank sizing, vaporizers, and related equipment to determine whether upgrades may be necessary.	Lisa Wright	Chandler is built out and we don't expect growth/increased demand there. GS would be the same. The new building will have it's own system.
11		Are you seeking a supplier that can provide end-to-end solutions, including construction services, related engineering support, product telemetry, centralized supply monitoring through a command center, and equipment such as freezers and medical gas systems?		
12		Per page 34 of the RFP, am I correct in understanding that the required drawings and documentation would only need to be provided by the supplier who is awarded the contract? The RFP states that the vendor shall provide two (2) complete sets of drawings, Operator Manuals, Service Manuals, schematics, and parts lists for the bulk systems to support routine maintenance by the UKHC Facilities Maintenance Department.	CMTA - Rick Briggs	Yes, this is the correct understanding.
13		If pad construction is going to be done under Construction Management group, can they provide contact info so we can engage with them and quote pad work?	Jennifer Ratner	Confirmed construction of the pad is under the CM. It is subbed to Lithko. Below is their contact as well as the CM's: Andrew Maines; mainesa@lithko.com Chris Zarvas; czarvas@walshgroup.com
14		Section 2.1 (Intent and Scope) states that UKHC Cancer Treatment Center & Ambulatory Care Center requires a <i>turnkey, fully operational Bulk Liquid Oxygen and Nitrogen system</i> , including design, engineering, supply, installation, testing, and commissioning in strict compliance with NFPA 55 and NFPA 99. Can UKHC please clarify what is meant by "turnkey" in this context? During the Pre-Bid Conference call, it was indicated that certain parties may already be involved in engineering aspects of the new system(s). Please clarify the roles and responsibilities of the awarded vendor versus those already engaged and specify what scope of design and engineering work is expected to be provided by the awarded vendor.	AEI - Kevin Niimi	AEI feedback: electrical documents provide 120V power to the Med Gas farm area for connection to the med gas alarm/equipment.
15		What are the dimensions of the MEDGAS tank area?	CA - Kevin Kirk	Dimension are given on sheets L200.3 & L805. Final size may be adjusted by bidder to fit equipment.

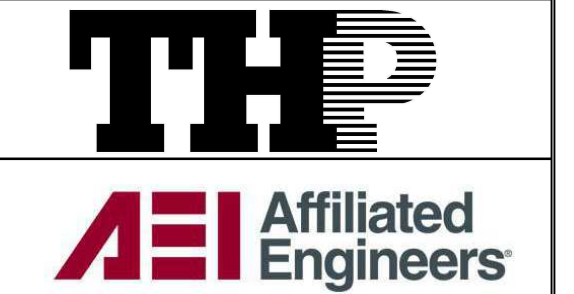




ALL PANELBOARDS ON THIS SHEET PROVIDED BY OTHERS UNDER CORE AND SHELL BID PACKAGE

LLSPLA1													
MAIN TYPE		MAIN FUSE		VOLTAGE				120/208 Wye		LOCATION		LEVEL 00, ELEC CSA00E	
MAIN RATING		100 A		3 PHASE		4 WIRE		FED FROM		LLSD1A		SCCR	
BUS RATING		100 A		MOUNTING		Surface		ENCLOSURE		Type 1		CALCULATED AVAILABLE FAULT...	
												22 kA	
REMARKS: FUSIBLE COORDINATION PANELBOARD - BRANCH DEVICES SHALL ALL BE FUSED AS INDICATED IN SPECIFICATIONS. PROVIDE LOCK ON DEVICES WHERE "LOCK" INDICATED IN NOTES. PAINT BREAKER HANDLE RED WHERE "R" INDICATED IN NOTES.													
DESCRIPTION	FUSE NOTES	FUSE AMP. POLES	CKT NO	LEFT SIDE, KVA			RIGHT SIDE, KVA			FUSE AMP. POLES	FUSE NOTES	DESCRIPTION	
				A	B	C	A	B	C				
LIGHTING ROOM A000A, A000B, A000C...		20 A	1	LS-1	0.09		1.20		LS-2	1	20 A	W/INDOOR	
LIGHTING VESTIBULE A000A		20 A	1	LS-3	0.03		0.00		LS-4	1	20 A	W/INDOOR	
AHU-1 FIRE SMOKE DAMPERS	LOCK, R	20 A	1	LS-5		0.10		1.50	LS-5	1	20 A	DOOR HARDWARE ROOM B001...	
AHU-17 FIRE SMOKE DAMPERS	LOCK, R	20 A	1	LS-7	0.10		0.00		LS-8	1	20 A	SPARE	
AHU-17 FIRE SMOKE DAMPERS	LOCK, R	20 A	1	LS-9		0.10		0.00	LS-10	1	20 A	SPARE	
LIGHTING MECH/PLUMBING CSA00F		20 A	1	LS-11		0.68		0.00	LS-12	1	20 A	SPARE	
LIGHTING ROOM A000B, A000C...		20 A	1	LS-13	0.07		0.00		LS-14	1	20 A	SPARE	
LIGHTING ROOM A000B, A000C, A000D...		20 A	1	LS-15		0.97		0.00	LS-16	1	20 A	SPARE	
FSD CSA00F	LOCK, R	20 A	1	LS-17		0.25		0.00	LS-18	1	20 A	SPARE	
LIGHTING BOILER CSA00G		20 A	1	LS-19	0.14		0.00		LS-20	1	20 A	SPARE	
EM LIGHTING TLT		20 A	1	LS-21		0.13		0.00	LS-22	1	20 A	SPARE	
EM LIGHTING TLT		20 A	1	LS-23		0.28		0.00	LS-24	1	20 A	SPARE	
LIGHTING TLT-STAFF C000W5		20 A	1	LS-25	0.17		0.00		LS-26	1	20 A	SPARE	
DOOR HARDWARE		20 A	1	LS-27	1.00		0.00		LS-28	1	20 A	SPARE	
MED GAS ALARM PANEL A003, A00...		20 A	1	LS-29		0.15		0.00	LS-30	1	20 A	SPARE	
MED GAS ALARM PANEL A007A,		20 A	1	LS-31	0.10		0.00		LS-32	1	20 A	SPARE	
MED GAS ALARM PANEL A009H...		20 A	1	LS-33		0.10		0.00	LS-34	1	20 A	SPARE	
MED GAS ALARM PANEL A001, A002		20 A	1	LS-35		0.10		0.00	LS-36	1	20 A	SPARE	
SPARE		20 A	1	LS-37	0.00		0.00		LS-38	1	20 A	SPARE	
SPARE		20 A	1	LS-39	0.00		0.00		LS-40	1	20 A	SPARE	
SPARE		20 A	1	LS-41	0.00		0.00		LS-42	1	20 A	SPARE	
PHASE SUBTOTAL (KVA)				A			B			C			
PHASE SUBTOTAL (AMPS)				15 A			20 A			26 A			
LOAD CLASSIFICATION		CONNECTED (KVA)		DEMAND FACTOR		DEMAND (KVA)							
POWER		0.000 kVA		100%		0.000 kVA							
LIGHTING		2.552 kVA		100%		2.552 kVA							
MOTOR		4.500 kVA		125% LARGEST, 100% OTHER		4.500 kVA							
RECEPTACLE		0.200 kVA		100% FIRST 10KVA, 50% OTHER		0.200 kVA							
HEATING		0.000 kVA		100%		0.000 kVA							
X-RAY		0.000 kVA		100%		0.000 kVA							
TOTAL LOAD		7.252 kVA				7.252 kVA							
TOTAL AMPS		20 A				20 A							

LLSPLA2													
MAIN TYPE		MAIN FUSE		VOLTAGE				120/208 Wye		LOCATION		LEVEL 00, GENERATORS 299	
MAIN RATING		100 A		3 PHASE		4 WIRE		FED FROM		LLSD1A		SCCR	
BUS RATING		100 A		MOUNTING		Surface		ENCLOSURE		Type 1		CALCULATED AVAILABLE FAULT...	
												22 kA	
REMARKS: FUSIBLE COORDINATION PANELBOARD - BRANCH DEVICES SHALL ALL BE FUSED AS INDICATED IN SPECIFICATIONS. PROVIDE LOCK ON DEVICES WHERE "LOCK" INDICATED IN NOTES. PAINT BREAKER HANDLE RED WHERE "R" INDICATED IN NOTES.													
DESCRIPTION	FUSE NOTES	FUSE AMP. POLES	CKT NO	LEFT SIDE, KVA			RIGHT SIDE, KVA			FUSE AMP. POLES	FUSE NOTES	DESCRIPTION	
				A	B	C	A	B	C				
FUEL OIL PUMP - 299-2		15 A	1	0.42		0.10		0.10		2	1	20 A	MEDGAS BULK TANK
			3	0.42						4	1	20 A	MEDGAS BULK TANK
			5	0.42						4	1	20 A	SPARE
BATTERY CHARGER - GEN-A1 - 299-2		20 A	1	7	1.50		0.00		8	1	20 A	SPARE	
JACKET HEATER - GEN-A1 - 299-2		20 A	1	9	4.50		0.00		10	1	20 A	SPARE	
			2	11		4.50		0.00	12	1	20 A	SPARE	
HEATER PUMP - GEN-A1 - 299-2		20 A	1	13	0.60		0.00		14	1	20 A	SPARE	
HEATER PUMP - GEN-A2 - 299-2		20 A	1	15	0.60		0.00		16	1	20 A	SPARE	
ALTERNATOR HEATER - GEN-A1 - ...		20 A	1	17		0.60		0.00	18	1	20 A	SPARE	
BLANKET HEATER - GEN-A1 - 299-2		20 A	1	19	0.16		0.00		20	1	20 A	SPARE	
BATTERY CHARGER - GEN-A2 - 299-2		20 A	1	21	1.50		0.00		22	1	20 A	SPARE	
STRIP HEATER - GEN-A2 - 299-2		20 A	1	23		0.60		0.00	24	1	20 A	SPARE	
BLANKET HEATER - GEN-A2 - 299-2		20 A	1	25	0.16		0.00		26	1	20 A	SPARE	
JACKET HEATER - GEN-A1 - 299-2		20 A	2	27	4.50		0.00		28	1	20 A	SPARE	
			29	4.50			0.00		30	1	20 A	SPARE	
SPARE		20 A	1	31	0.00		0.00		32	1	20 A	SPARE	
SPARE		20 A	1	33	0.00		0.00		34	1	20 A	SPARE	
DT-001 - GEN-A1 - 299-2		20 A	1	35		0.50		0.00	36	1	20 A	SPARE	
DT-002 - GEN-A2 - 299-2		20 A	1	37	0.50		0.00		38				
SPARE		20 A	1	39	0.00		0.00		40	3	60 A	SPARE	
SPARE		20 A	1	41	0.00		0.00		42				
PHASE SUBTOTAL (KVA)				A			B			C			
PHASE SUBTOTAL (AMPS)				29 A			107 A			103 A			
LOAD CLASSIFICATION		CONNECTED (KVA)		DEMAND FACTOR		DEMAND (KVA)							
POWER		0.000 kVA		100%		0.000 kVA							
LIGHTING		0.000 kVA		100%		0.000 kVA							
MOTOR		2.460 kVA		125% LARGEST, 100% OTHER		2.460 kVA							
RECEPTACLE		23.720 kVA		100% FIRST 10KVA, 50% OTHER		16.860 kVA							
HEATING		0.000 kVA		100%		0.000 kVA							
X-RAY		0.000 kVA		100%		0.000 kVA							
TOTAL LOAD		26.180 kVA				19.320 kVA							
TOTAL AMPS		73 A				54 A							



Cancer Treatment Center + Advanced Ambulatory Center
1220 Elizabeth St.
Lexington, KY 40536
UK Project Number 2563.0

No.	Description	Date
1	FO 80% CD	08/13/24
2	FO 100% CD REVIEW	10/01/24
3	BP-08 FO BID & PERMIT	11/05/24
4	PCO-101	10/30/25

Drawn By	KN
Checked By	SK, AS
Client Number	514
Project Number	6926

DRAWING TITLE
ELECTRICAL PANEL SCHEDULES - LIFE SAFETY

SHEET NO.
E940.1A

ISSUANCES

No.	Description	Date
7	FO 100% DD REVIEW	08/19/24
8	FO 80% CD	08/13/24
9	FO 100% CD REVIEW	10/01/24
10	BP-08 FO BID & PERMIT	11/05/24
35	PCO-101	03/11/26

Drawn By
JAM

Checked By
TKR

Client Number
514

Project Number
6926

Signature: *Leonard Thomas Sorrell*
BICSI ID # 157133

DRAWING TITLE

**LOWER LEVEL IT PLAN
- AREAS C D**

SHEET NO.

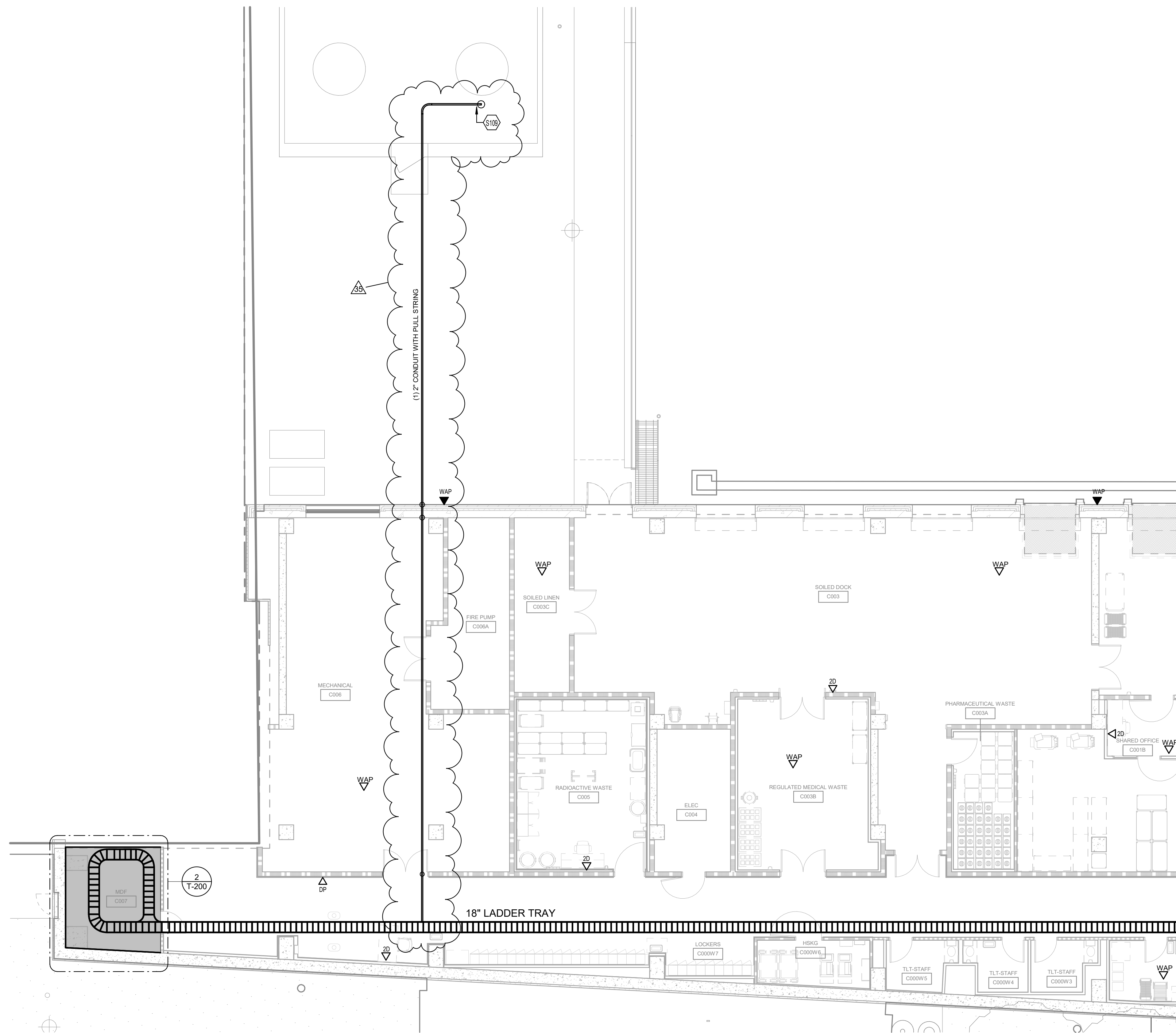
T-100C

GENERAL NOTES (DATA):

- A. REFER TO SPECIFICATIONS.
- B. REFER TO DETAILS.
- C. REFER TO ENLARGED DRAWINGS.
- D. REFER TO LEGEND.
- E. COORDINATE EXACT INSTALLATION LOCATION AND REQUIREMENTS OF CEILING DEVICES WITH ARCHITECTURAL REFLECTED CEILING PLANS.
- F. COORDINATE EXACT INSTALLATION LOCATION AND REQUIREMENTS OF DEVICES/OUTLETS WITH ARCHITECTURAL WALL ELEVATIONS.
- G. ALL RACEWAY SYSTEMS INCLUDING CONDUITS, PULL STRING AND BACK BOXES, TO SUPPORT THE INSTALLATION OF STRUCTURED CABLING AND EQUIPMENT SHALL BE PROVIDED BY THE ELECTRICAL CONTRACTOR. STRUCTURED CABLING CONTRACTOR TO PROVIDE COORDINATION FOR THE INSTALLATION OF THIS RACEWAY SYSTEM WITH THE ELECTRICAL CONTRACTOR.
- H. THE CONTRACTOR SHALL PROVIDE AND INSTALL FIRE-STOPPING IN ALL CONDUITS PENETRATION RATED WALLS/FLOORS AFTER CABLING IS INSTALLED AND PROVIDE PHOTOGRAPHIC EVIDENCE OF COMPLIANCE WITH AHJ.
- I. CATEGORY CABLING SHALL NOT EXCEED 90 METERS FOR PERMANENT LINK CONNECTIONS.
- J. CABLE WITHIN UNDER SLAB ON GRADE USE OUTSIDE PLANT CABLING.
- K. CABLING PATHWAYS SHALL CROSS FLUORESCENT FIXTURE AND POWER CONDUITS PERPENDICULARLY WITH PROPER SEPARATION.
- L. ALL ELECTRICAL POWER CONNECTION AND BUILDING GROUNDING SYSTEM PROVIDED BY ELECTRICAL CONTRACTOR.
- M. PROVIDE AND INSTALL 1 DATA CONNECTION FOR ALL BAS SYSTEM PANELS IN ENTIRE BUILDING. COORDINATE EXACT LOCATION WITH MECHANICAL CONTRACTOR.

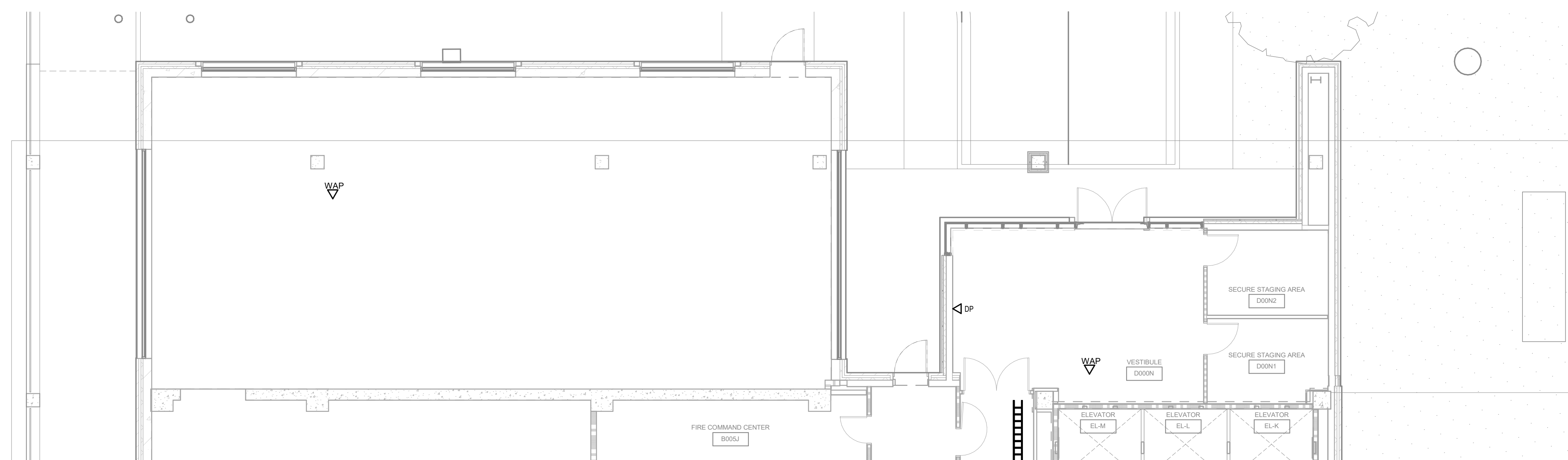
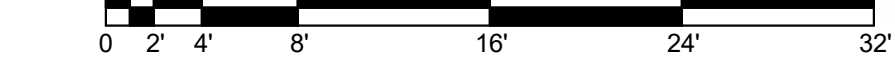
TAGGED NOTES

S109 PROVIDE AND INSTALL JUNCTION BOX WITH COVER.



1 LOWER LEVEL IT PLAN - AREA C

SCALE: 1/8" = 1'-0"



2 LOWER LEVEL IT PLAN - AREA D

SCALE: 1/8" = 1'-0"

