



University of Kentucky

Procurement Services

INVITATION FOR BIDS

CCK-3050.1-1-26

WT Young Library Renovation

PROJECT 3050.1

ADDENDUM #4

4/23/2026

IMPORTANT: BID AND ADDENDUM MUST BE RECEIVED BY 4/30/2026 @ 3:00 P.M. LEXINGTON, KY TIME

Bidder must acknowledge receipt of this and any addendum as stated in the Invitation for Bids.

ITEM #1: Bid Opening Date Updated

- Bid opening has been rescheduled for Thursday, April 30th at 3:00PM EST.

ITEM #2: Updated Drawings

- Please refer to the attached document – the following drawings and sheets have been attached to this amendment:
 A-421 – Interior Elevations
 A-601 – Door Schedule and Details
 Sheet M-001 – Mechanical Cover Sheet
 Sheet MD100 – Mechancial Ductwork Demolition Basement Plan Overall

OFFICIAL APPROVAL
UNIVERSITY OF KENTUCKY

SIGNATURE

Contracting Officer / (859) 257-9102

Typed or Printed Name

FOR THE PROJECT TITLED:

**WT YOUNG LIBRARY
LOWER LEVEL RENOVATION**

University of Kentucky
Lexington, Kentucky

To: Prospective Bidders

From: JRA Architects
301 East Vine Street
Lexington, Kentucky 40507

Project Contact: P. Matthew DeLuca, AIA

The Addendum will form a part of the Contract Documents and modifies the original Bidding Documents dated April, 2026.

Bidders must acknowledge receipt of this Addendum in the space provided on the Form of Proposal. Failure to do so may subject the bidder to disqualification.

Bidding Documents, including the Drawings and Specifications, are amended as described herein.

ARCHITECTURAL ITEMS:

ITEM NO. 3.01

Refer to the attached document – the following drawing sheets have been revised to clarify material changes to three doors and one countertop.

- A-421 – Interior Elevations
- A-601 – Door Schedule and Details

MECHANICAL ITEMS:

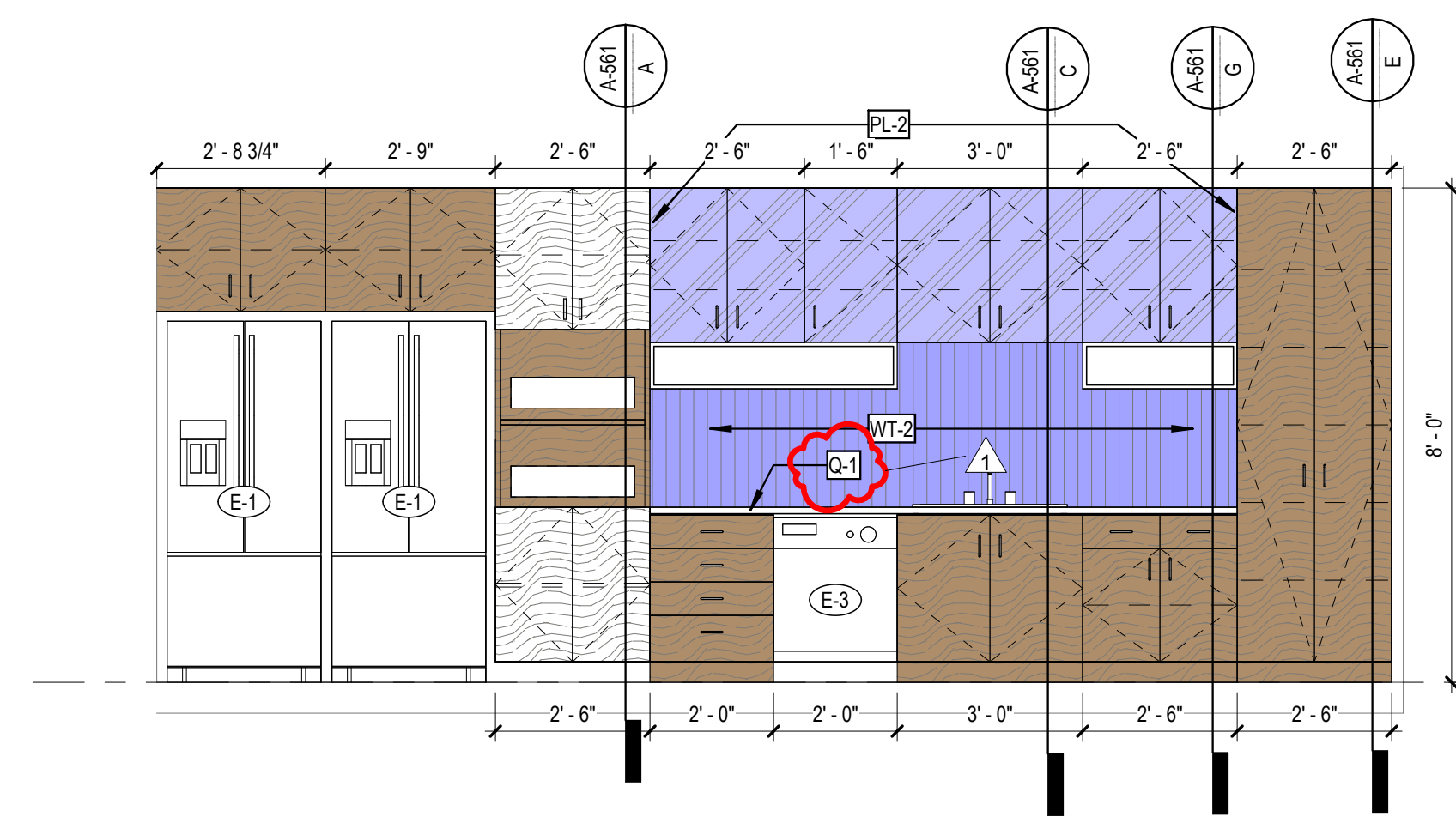
ITEM NO. 3.02

Refer to the attached revised sheets for the following drawing changes:

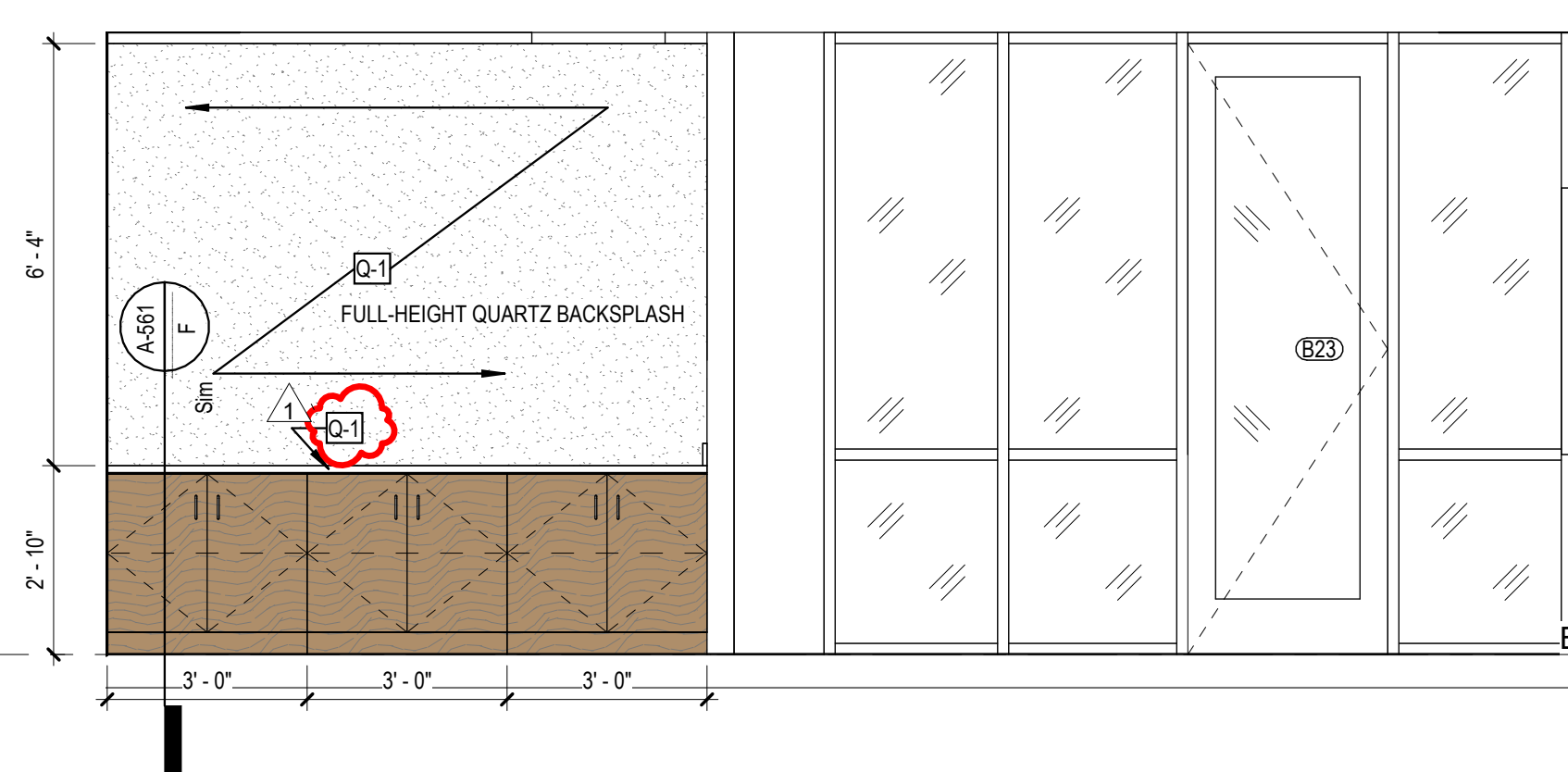
Sheet M-001 – Mechanical Cover Sheet

- a. Updated HVAC Alternates block to reflect change to owner-furnished/contractor-installed controllers for all VAVs in the project scope. Updated number of boxes in each alternate to reflect finalized VAV numbers.

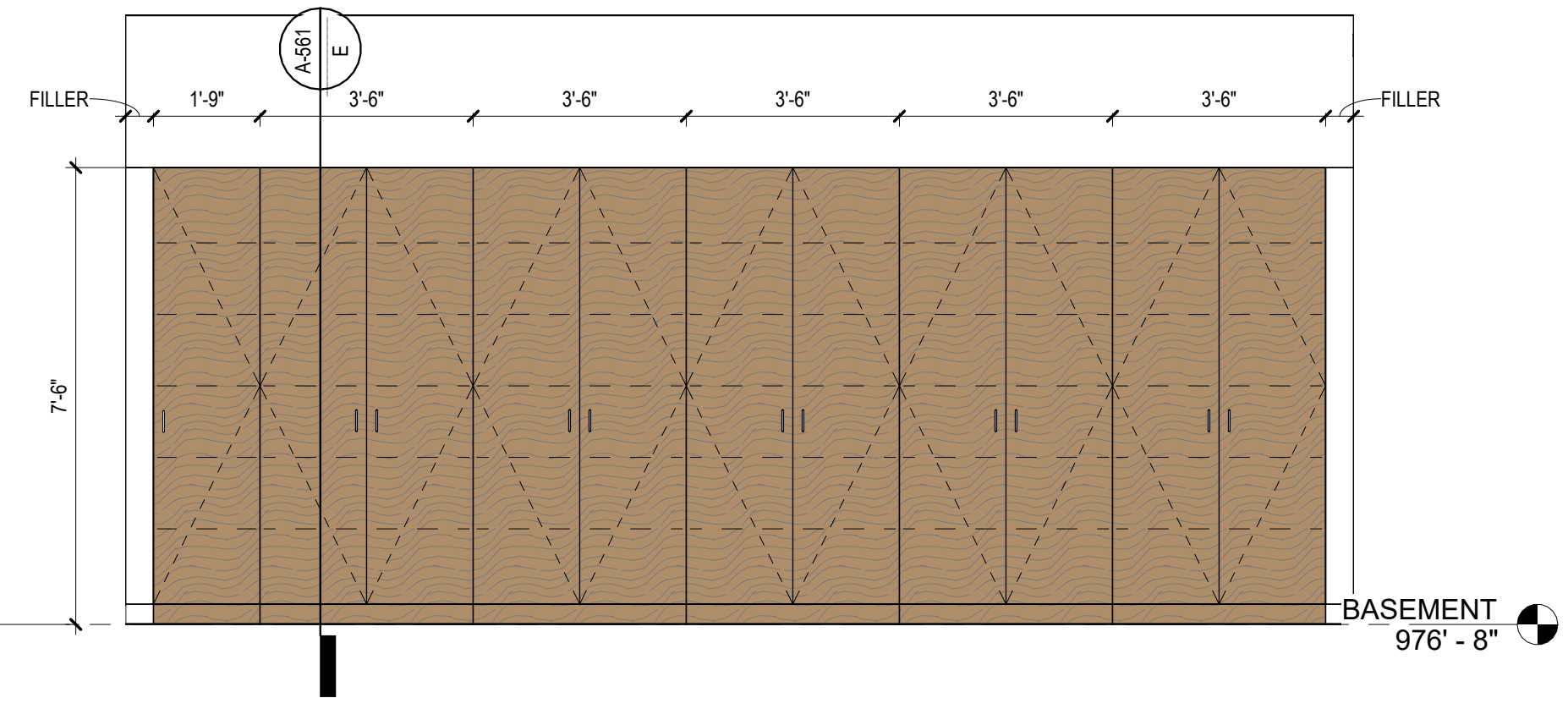
C:\Users\jra\OneDrive\Documents\Projects\UK WT Young Library - Lower Level Renovation\Revit\Autodesk\Revit 2025\CollaborationCache\CHECKER\UK WT Young Library - Lower Level Renovation\UK WT Young Library - Lower Level Renovation.rvt



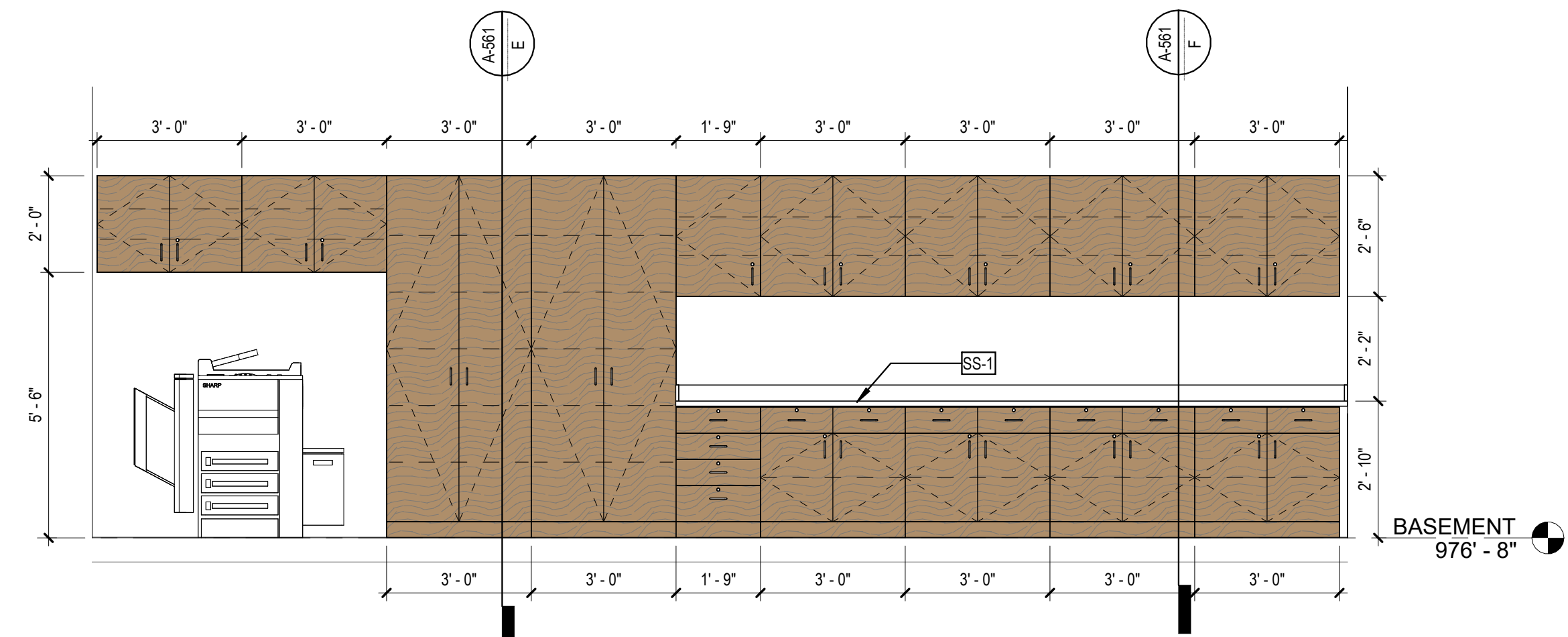
A BREAK ROOM CASEWORK
3/8" = 1'-0"



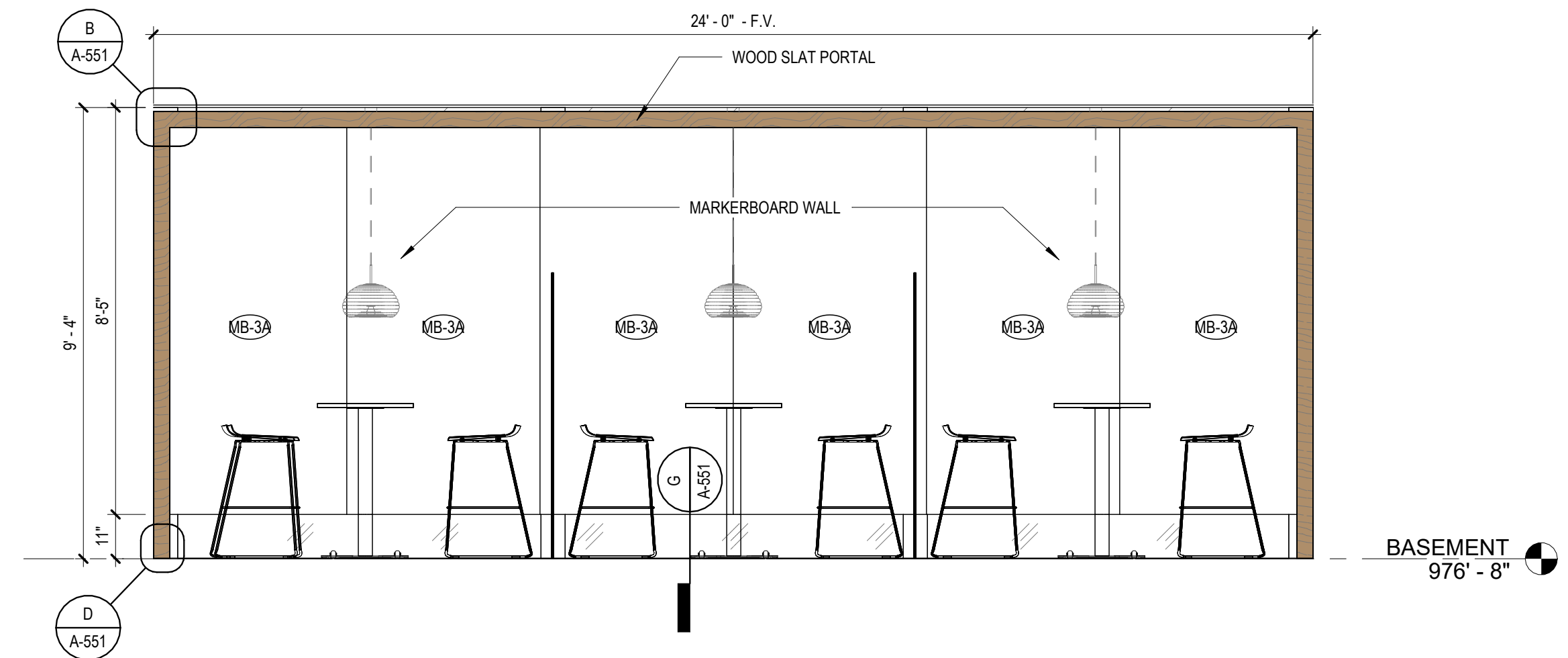
B CONFERENCE CASEWORK
3/8" = 1'-0"



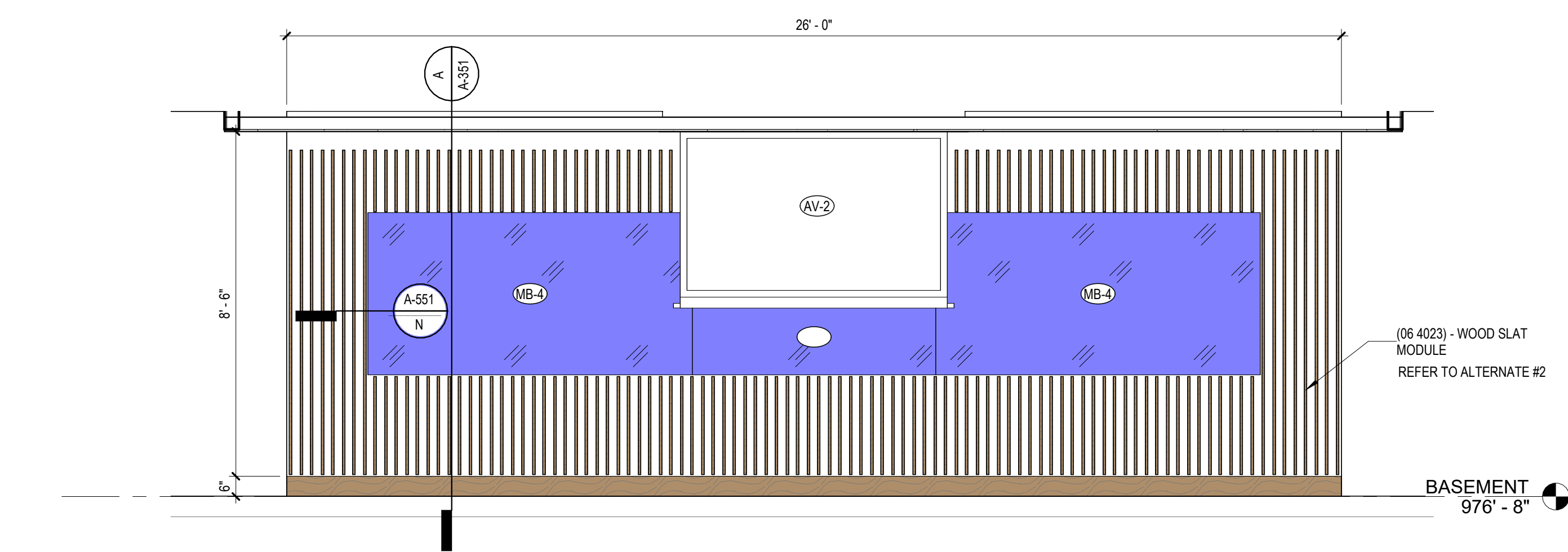
C GRAD STUDY ELEVATION
3/8" = 1'-0"



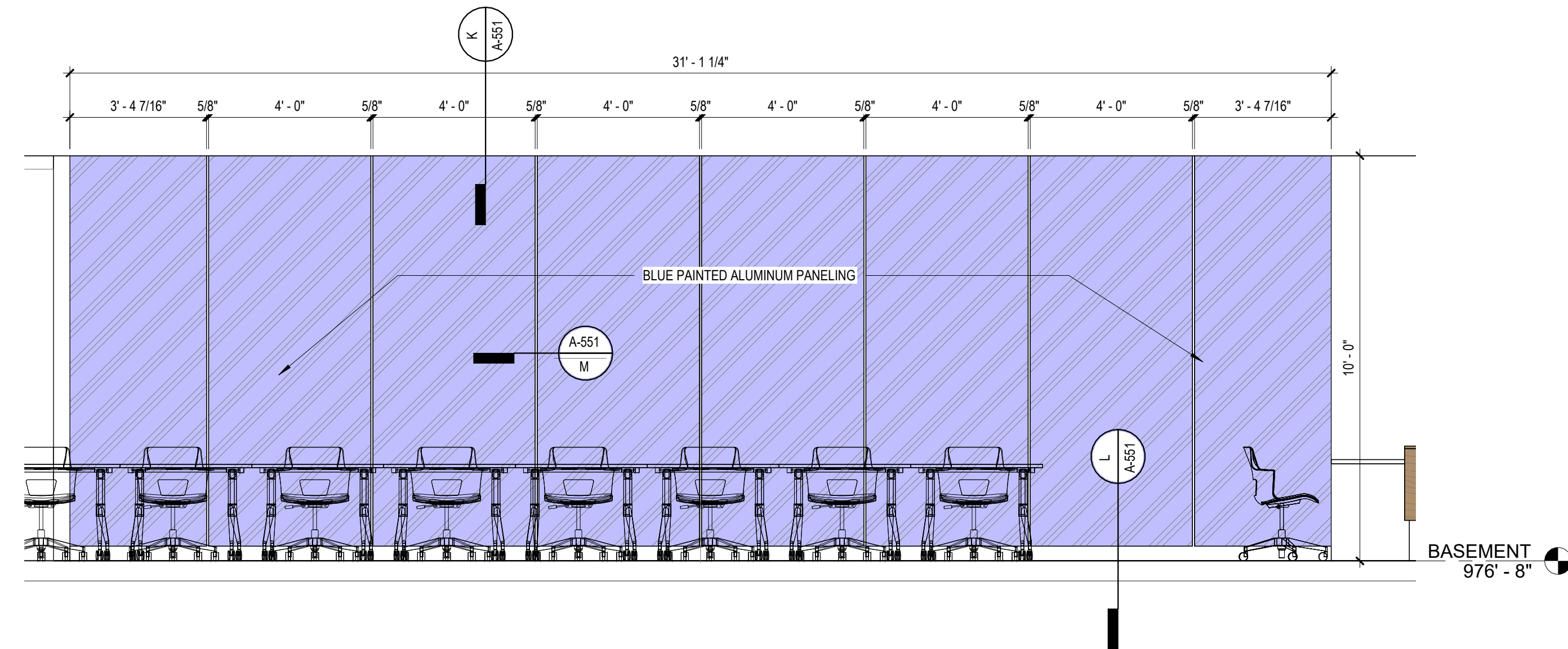
D COPY/PRINT CASEWORK
3/8" = 1'-0"



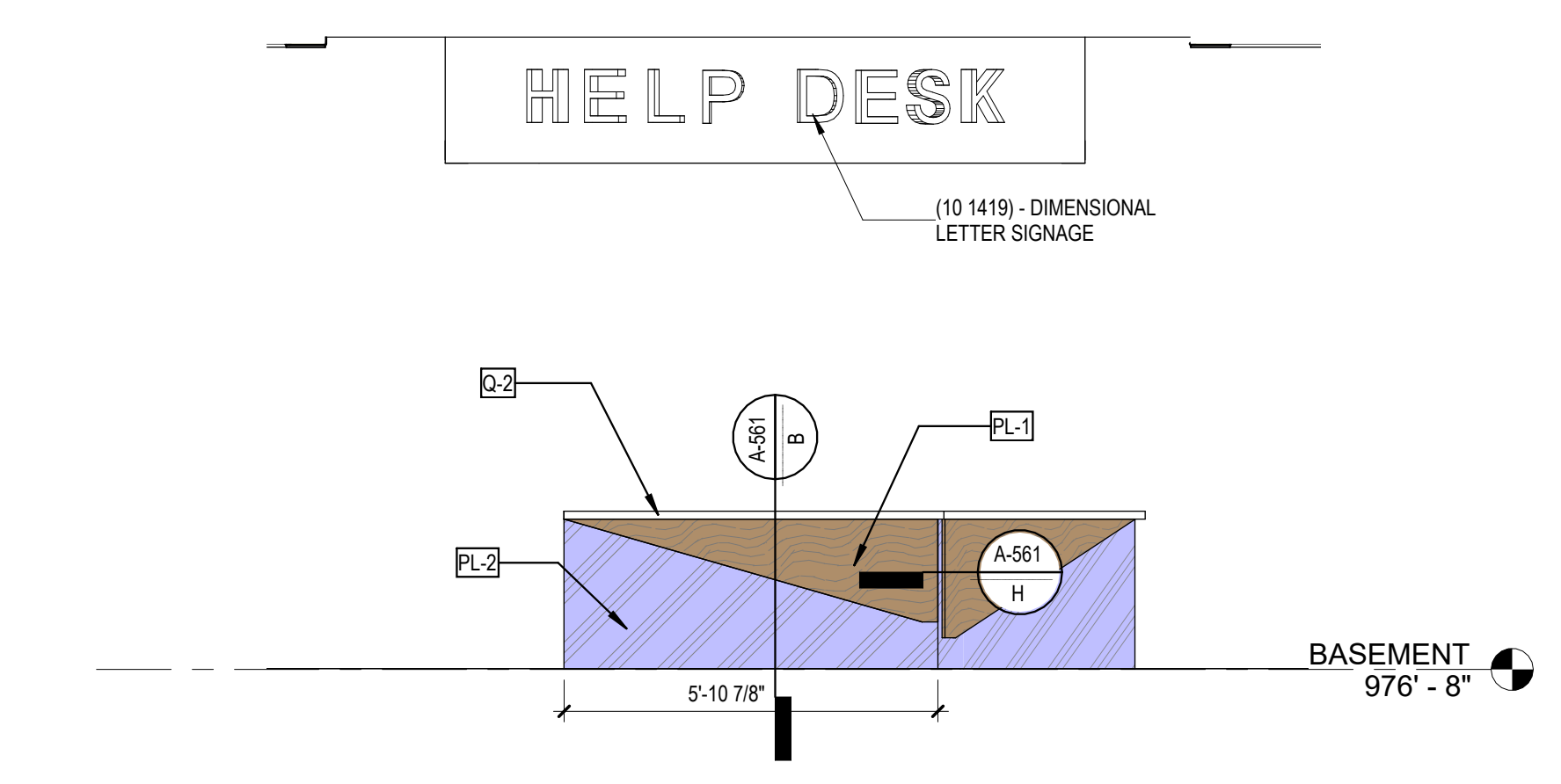
E TYPICAL GROUP HUDDLE
3/8" = 1'-0"



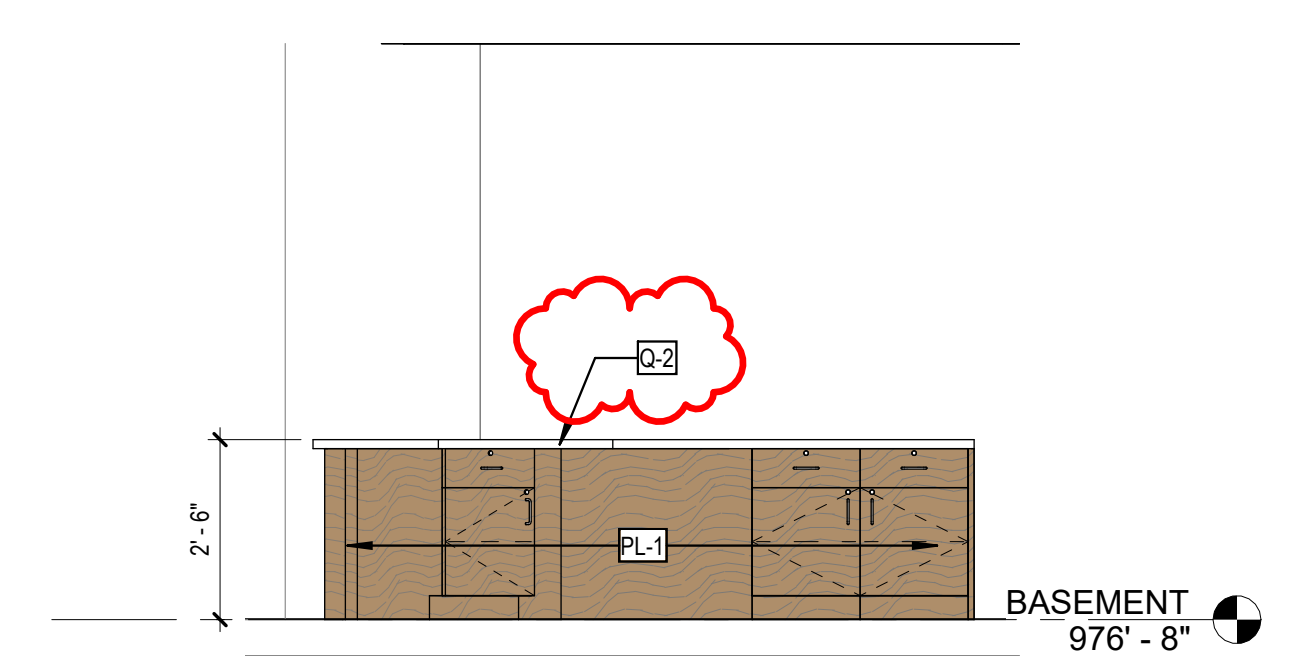
F WRITING CENTER ELEVATION
3/8" = 1'-0"



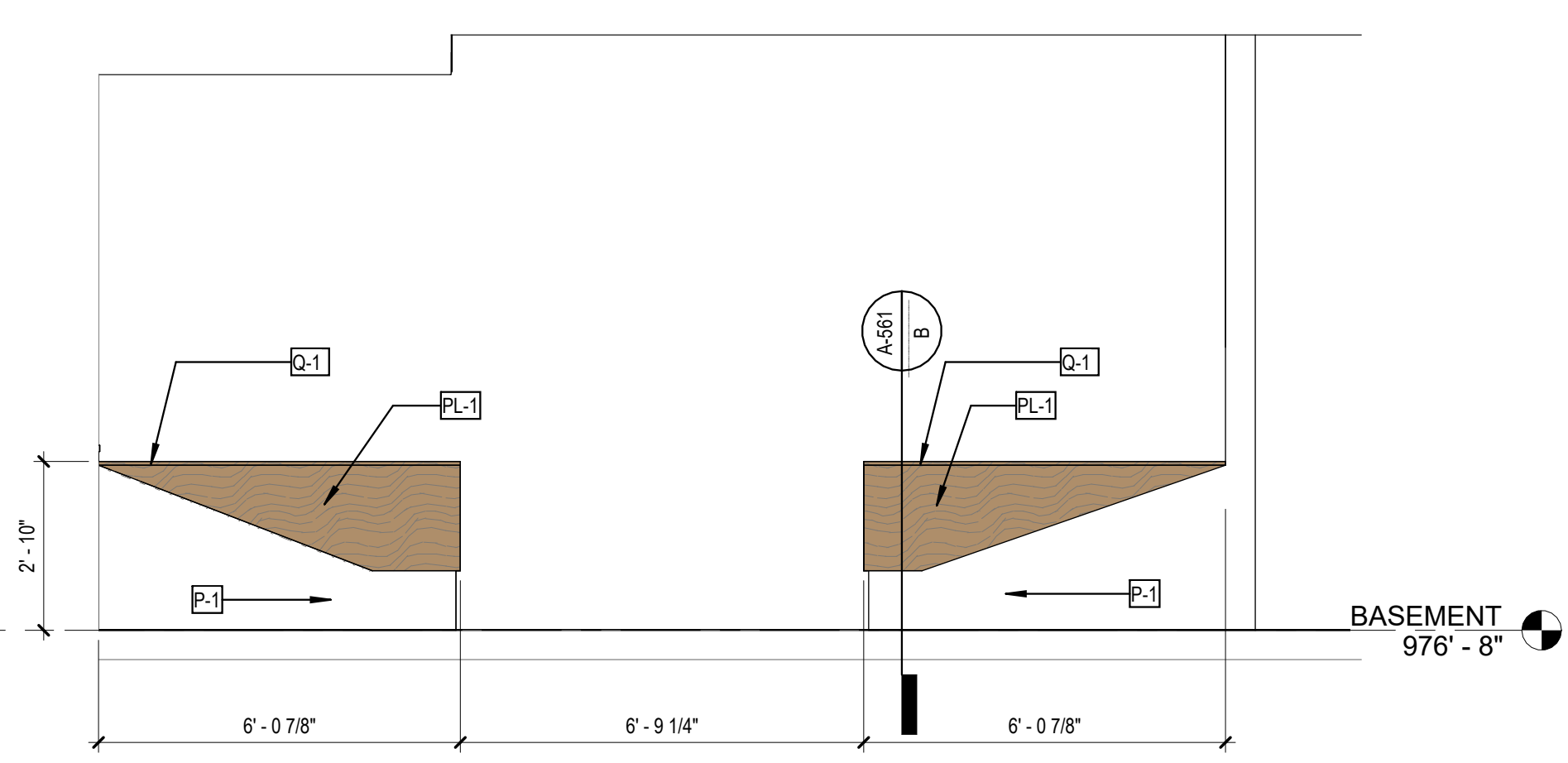
G TECH DESK ELEVATION A
3/8" = 1'-0"



H HELP DESK ELEVATION A
3/8" = 1'-0"



J HELP DESK ELEVATION B
3/8" = 1'-0"



K MEDIA DEPOT CHECK-IN
3/8" = 1'-0"

SPECIALTIES & EQUIPMENT SCHEDULE		
MARK	DESCRIPTION	COMMENTS
AV-1	60" WALL-MOUNT MONITOR	O.F.O.I.
AV-3	60" WALL-MOUNT MONITOR - REFER TO ELEC.	O.F.O.I.
10 1100 - VISUAL DISPLAY SURFACES		
MB-1	FRAMELESS GLASS MARKERBOARD - 4' X 6' (WHITE)	C.F.C.I.
MB-3	FRAMELESS GLASS MARKERBOARD - 4' X 6' (WHITE)	C.F.C.I.
MB-3A	FRAMELESS GLASS MARKERBOARD - 4' X 6' (WHITE) VERTICAL	C.F.C.I.
MB-4	FRAMELESS GLASS MARKERBOARD - 4' X 6' (BLUE)	C.F.C.I.
MB-5	FRAMELESS GLASS MARKERBOARD - 4' X 12' (WHITE)	C.F.C.I.
10 4413 - FIRE EQUIPMENT		
F1	SEMI-RECESSED FIRE EXTINGUISHER CABINET	C.F.C.I.
11 5213 - PROJECTION SCREENS		
AV-2	PROJECTION SCREEN	C.F.C.I.
EQUIPMENT		
E-1	STAFF BREAK ROOM REFRIGERATOR	O.F.O.I.
E-2	UK WASTE RECEPTACLE - SS MODEL 1	O.F.O.I.
EQUIPMENT - NIC		
E-3	ADA HEIGHT DISHWASHER	O.F.O.I.



301 East Vine Street
Lexington, Kentucky 40507
859.252.6781



RESERVED FOR ANJ STAMP

BID DOCUMENTS
UK WT YOUNG LIBRARY - LOWER LEVEL RENOVATION
UNIVERSITY OF KENTUCKY
LEXINGTON, KENTUCKY

ARCHITECTURAL

PROJECT 202586
DATE 03.31.2026

REVISIONS		
No.	Description	Date
1	ADDENDUM 3	04.16.26

JRA ARCHITECTS HAS RETAINED AN ELECTRONIC VERSION OF THESE DRAWINGS. THE CLIENT AGREES NOT TO REUSE THESE DRAWINGS IN ELECTRONIC OR ANY OTHER FORMAT, IN WHOLE OR IN PART, FOR ANY PURPOSE OTHER THAN FOR THE PROJECT. THE CLIENT AGREES NOT TO TRANSFER THESE ELECTRONIC FILES TO OTHERS WITHOUT THE PRIOR WRITTEN CONSENT OF THE ARCHITECT. THE CLIENT FURTHER AGREES TO WAIVE ALL CLAIMS AGAINST THE ARCHITECT RESULTING IN ANY WAY FROM ANY UNAUTHORIZED CHANGES TO OR REUSE OF THE ELECTRONIC FILES FOR ANY OTHER PROJECT BY ANYONE OTHER THAN THE ARCHITECT.

INTERIOR ELEVATIONS

A-421

COPYRIGHT 2026 - JRA, INC.

4/16/2026 2:57:39 PM

MECHANICAL LEGEND	
SYMBOL	DESCRIPTION
PLAN-VIEW LINE TYPES	
	WORK SHOWN FADED INDICATES EXISTING WORK TO REMAIN OR NEW WORK BY OTHERS AS APPLICABLE
	WORK SHOWN BOLD-DASHED INDICATES SELECTIVE DEMOLITION WORK
	WORK SHOWN BOLD-CONTINUOUS INDICATES NEW WORK
DRAWING SET APPEARANCE	
TO BETTER COMMUNICATE SCOPE TO PERMIT AGENCIES AND CONTRACTORS, EACH DRAWING IN THIS DRAWING SET HAS BEEN CREATED IN BOTH "COLOR" AND "BLACK AND WHITE". THERE EXISTS A COLOR LAYER WITHIN EACH DRAWING WHERE VISIBILITY IS CONTROLLED THROUGH THE PDF LAYER MANAGER. THIS LAYER VISIBILITY CAN BE TOGGLED DISPLAYING EITHER "COLOR" OR "BLACK AND WHITE". TO MAINTAIN SCOPE BASED SHADING WHEN PRINTING TO PAPER, BLACK AND WHITE NEEDS TO BE VISIBLE. FOR FURTHER INSTRUCTIONS, REFER TO CONTRACTOR RESOURCES ON OUR WEBSITE AND DOWNLOAD "DRAWING COLOR INSTRUCTIONS". WWW.KLHENGRS.COM - CONTRACTOR RESOURCES (RIGHT HAND SIDE OF PAGE).	
PIPING LINE TYPES	
	HOT WATER SUPPLY
	HOT WATER RETURN
	LOW PRESSURE STEAM
	LOW PRESSURE STEAM CONDENSATE
MECHANICAL PIPING ACCESSORIES	
	MANUAL ISOLATION VALVE
	AUTOMATIC BALANCING VALVE
	MANUAL BALANCING VALVE
	UNION
	TEMPERATURE & PRESSURE TEST PORT
	FLOW DIRECTION
	FLEX PIPING CONNECTOR
	Y-STRAINER
	STRAINER WITH BLOW OFF
	DRAIN VALVE (3/4" UNLESS OTHERWISE NOTED)
	MANUAL AIR VENT
	2 WAY CONTROL VALVE (MODULATING)

MECHANICAL LEGEND	
SYMBOL	DESCRIPTION
MECHANICAL AIR DEVICES	
	SUPPLY REGISTER
	RETURN GRILLE
	CEILING DIFFUSER
	2x2' SQUARE CEILING DIFFUSER WITH 10" NECK
	LINEAR SLOT DIFFUSER
MECHANICAL DUCTWORK	
	SUPPLY DUCT
	RETURN DUCT
	EXHAUST DUCT
	OUTSIDE AIR DUCT
	1" LINED DUCTWORK
	DUCT FLEX CONNECTOR
	FLEXIBLE DUCTWORK CONNECTION
	BRANCH TAKEOFF
	REDUCER, CONCENTRIC
	REDUCER, NONCONCENTRIC
MECHANICAL DUCTWORK ACCESSORIES	
	DUCT WITH MANUAL VOLUME DAMPER
	ELBOW WITH TURNING VANES

MECHANICAL LEGEND	
SYMBOL	DESCRIPTION
MECHANICAL STATS & SENSORS	
	LOW VOLTAGE THERMOSTAT
MECHANICAL MISCELLANEOUS	
	DIGITAL INPUT
	DIGITAL OUTPUT
	ANALOG INPUT
	ANALOG OUTPUT
	HARD WIRE INTERLOCK
	CONNECT TO EXISTING (FIELD VERIFY EXISTING UTILITY SERVICE TYPE, PRIOR TO MAKING CONNECTION)

HVAC ALTERNATES

ALTERNATE NO. 4: RELOCATED VAV BOXES
 BASE BID: REFER TO THE MECHANICAL DRAWINGS. THE 23 EXISTING HOT WATER VAV BOXES TO BE RELOCATED TO RECEIVE CONTROLS UPGRADES (OLD DDC STANDARD TO NEW DDC STANDARD) IN THE BASE BID. CONTROLLERS ARE OWNER-FURNISHED, CONTRACTOR-INSTALLED.

ALTERNATE BID: THE 23 EXISTING VAV BOXES TO BE RELOCATED WILL BE REPLACED WITH NEW CONTROLLERS ARE OWNER-FURNISHED, CONTRACTOR-INSTALLED.

ALTERNATE NO. 5: VAV BOXES TO REMAIN
 BASE BID: REFER TO THE MECHANICAL DRAWINGS. EXISTING HOT WATER VAV BOXES TO REMAIN IN PLACE TO RECEIVE CONTROLS UPGRADES (OLD DDC STANDARD TO NEW DDC STANDARD) IN THE BASE BID. CONTROLLERS ARE OWNER-FURNISHED, CONTRACTOR-INSTALLED.

ALTERNATE BID: THE 44 EXISTING VAV BOXES TO REMAIN IN PLACE WILL BE REPLACED WITH NEW CONTROLLERS ARE OWNER-FURNISHED, CONTRACTOR-INSTALLED.

DEMOLITION GENERAL NOTES

A. REMOVE EXISTING DUCTWORK, CONTROLS, AND MISCELLANEOUS HVAC EQUIPMENT NOT INTENDED FOR REUSE. FIELD VERIFY THE EXACT SCOPE PRIOR TO BID. COORDINATE ALL DEMOLITION WORK WITH THE UNIVERSITY AND GENERAL CONTRACTOR.

NEW WORK GENERAL NOTES

A. PROVIDE ALL LABOR, MATERIAL, AND EQUIPMENT NECESSARY TO COMPLETELY FURNISH, INSTALL, AND PLACE INTO OPERATION. ALL SYSTEMS SHOWN ON THE DRAWINGS AND DELINEATED IN THE SPECIFICATIONS IN ACCORDANCE WITH ALL STATE AND LOCAL CODES AND ORDINANCES. REPORT ANY KNOWN DISCREPANCIES TO THE ARCHITECT/ENGINEER PRIOR TO INSTALLATION.

B. REFER TO ARCHITECTURAL REFLECTED CEILING PLANS FOR EXACT LOCATIONS OF CEILING DIFFUSERS, REGISTERS AND GRILLES.

C. DO NOT SCALE DRAWINGS. REFER TO ARCHITECTURAL DRAWINGS FOR DIMENSIONED LOCATIONS OF WALLS, DOORS, WINDOWS, AND CABINETS.

D. COORDINATE WORK AND SPACE REQUIREMENTS IN CEILING SPACES WITH OTHER TRADES PRIOR TO INSTALLATION.

E. PROVIDE VOLUME DAMPERS AT ALL SUPPLY, RETURN, AND EXHAUST DUCT BRANCH TAKE-OFFS.

F. PROVIDE TURNING VANES IN ALL 90 DEGREE MITERED ELBOWS. OMIT TURNING VANES IN ACOUSTIC LINED RETURN DUCT ELBOWS.

G. PROVIDE FLEXIBLE DUCT ON INLET TO EACH CEILING DIFFUSER. CUT FLEXIBLE DUCTS TO LENGTH NEEDED AND INSTALL WITHOUT KINKS OR SHARP BENDS (BENDS WITH CENTERLINE RADIUS LESS THAN DUCT DIAMETER). SUPPORT FLEXIBLE DUCTS WITH MINIMUM 1" WIDE METAL STRAPS OR SADDLES.

H. SIZES OF ACOUSTIC LINED DUCTS ARE NET INSIDE DIMENSION. INCREASE SHEET METAL SIZE ACCORDINGLY.

I. RUNOUTS TO CEILING DIFFUSERS ARE THE SAME SIZE AS THE DIFFUSER NECK UNLESS NOTED OTHERWISE.

J. INSTALL ALL EQUIPMENT WITH CODE REQUIRED AND MANUFACTURER RECOMMENDED MINIMUM CLEARANCES FOR SERVICE ACCESS AND FIRE PROTECTION.

K. ALL MATERIALS EXPOSED WITHIN PLENUMS SHALL BE NON-COMBUSTIBLE OR SHALL HAVE A FLAME SPREAD INDEX OF NOT MORE THAN 25 AND A SMOKE DEVELOPED INDEX OF NOT MORE THAN 50 WHEN TESTED IN ACCORDANCE WITH ASTM E 84.

STANDARD HVAC ABBREVIATIONS			
AAV	AUTOMATIC AIR VENT	HD	HEAD
ACCESS	ACCESSORIES	HOA	HAND-OFF/AUTOMATIC
AD	ACCESS DOOR	HP	HORSEPOWER
AFF	ABOVE FINISHED FLOOR	HPR	HIGH PRESSURE RETURN
AMP	AMPERE	HSC	(STEAM CONDENSATE)
AP	ACCESS PANEL	HSTAT	HEATING STAT
APD	AIR PRESSURE DROP	HTG	HEATING
ARI	AIR CONDITIONING AND REFRIGERATION INSTITUTE	HWR	HEATING HOT WATER RETURN
ASME	AMERICAN SOCIETY OF MECHANICAL ENGINEERS	HWS	HEATING HOT WATER SUPPLY
BAS	BUILDING AUTOMATION SYSTEM	HZ	HERTZ
BD	BACKDRAFT DAMPER	IO	INPUT/OUTPUT
BHP	BRAKE HORSEPOWER	IAQ	INDOOR AIR QUALITY
BTU	BRITISH THERMAL UNIT	IN HG	INCHES OF MERCURY
BTUH	BRITISH THERMAL UNIT PER HOUR	IN WC	INCH WATER COLUMN
CD	CEILING DIFFUSER	IN WG	INCH WATER GAUGE
CFH	CUBIC FEET PER HOUR	INST	INSTALLED
CFM	CUBIC FEET PER MINUTE	IPV	INTERGRATED PART LOAD VALUE
CHWR	CHILLED WATER RETURN	INST	INSTALLED
CHWS	CHILLED WATER SUPPLY	KW	KILOWATT
CI	CAST IRON	KWH	KILOWATT HOUR
CO	CARBON MONOXIDE	LAT	LEAVING AIR TEMPERATURE
CO2	CARBON DIOXIDE	LBS/HR	POUNDS PER HOUR
COP	COEFFICIENT OF PERFORMANCE	LF	LINEAR FOOT (FEET)
CV	CONSTANT VOLUME	LPR	LOW PRESSURE RETURN
CWR	CONDENSER WATER RETURN	LPS	LOW PRESSURE STEAM
CWS	CONDENSER WATER SUPPLY	LWT	LEAVING WATER TEMPERATURE
DB	DEGBELS	MAX	MAXIMUM
DC	DISCONNECT	MBH	1000 BTUH
DDC	DIRECT DIGITAL CONTROLS	MCA	MINIMUM BRANCH CIRCUIT AMPACITY
DEG	DEGREE (DELTA CHANGE IN TEMPERATURE)	MERV	MINIMUM EFFICIENCY REPORTING VALUE
DIA	DIAMETER	MIN	MINIMUM
DIW	DEIONIZED WATER	MOD	MOTOR OPERATED DAMPER
DP	DIFFERENTIAL PRESSURE	MPS	MEDIUM PRESSURE RETURN
DX	DIRECT EXPANSION	MPP	MEDIUM PRESSURE STEAM
EA	ENTERING AIR	MRI	MAGNETIC RESONANCE IMAGING
EAT	ENTERING AIR TEMPERATURE	MVD	MANUAL VOLUME DAMPER
EER	ENERGY EFFICIENCY RATIO	NA	NOT APPLICABLE
EG	EMERGENCY POWER	NC	NOISE CRITERIA
EMERG	EMERGENCY POWER	NO	NORMALLY CLOSED
ESP	EXTERNAL STATIC PRESSURE	NO	NORMALLY OPEN
EWT	ENTERING WATER TEMPERATURE	NTS	NOT TO SCALE
EX	EXISTING	OA	OUTSIDE AIR
F	FAHRENHEIT	OC	OVER CURRENT PROTECTION
F&T	FLOAT AND THERMOSTATIC	PD	PARTS PER MILLION
FA	FIRE AREA	PPM	PRESSURE REGULATING (VALVE) STATION
FD	FIRE DAMPER	PRV	PRESSURE REGULATING VALVE
FLA	FULL LOAD AMPERES	PSI	POUNDS PER SQUARE INCH
FFM	FEET PER MINUTE	PSIA	POUNDS PER SQUARE INCH - ABSOLUTE
FPS	FEET PER SECOND	PSIG	POUNDS PER SQUARE INCH - GAGE
FT	FEET	RA	RETURN AIR
FRN	FURNISHED	RAI	RETURN AIR TEMPERATURE
GA	GAUGE	RH	RELATIVE HUMIDITY
GAL	GALLONS	RL	REFRIGERANT LIQUID LINE
GPM	GALLONS PER MINUTE	RLA	RUN LOAD AMPERE
RO	REVERSE OSMOSIS	RPM	REVOLUTIONS PER MINUTE
RPM	REVOLUTIONS PER MINUTE	RS	REFRIGERANT SUCTION
SA	SUPPLY AIR	SC	SHADING COEFFICIENT
SAT	SUPPLY AIR TEMPERATURE	SCD	SMOKE CONTROL DAMPER
SC	SHADING COEFFICIENT	SD	SMOKE DETECTOR
SCD	SMOKE CONTROL DAMPER	SENS	SENSIBLE HEAT
SD	SMOKE DETECTOR	SP	STATIC PRESSURE
SENS	SENSIBLE HEAT	STAB	STATIC PRESSURE
SP	STATIC PRESSURE	TAB	TOTAL DYNAMIC HEAD
STAB	STATIC PRESSURE	TDS	TOTAL DISSOLVED SOLIDS
TAB	TOTAL DYNAMIC HEAD	TSP	TOTAL STATIC PRESSURE
TDS	TOTAL DISSOLVED SOLIDS	TSTAT	THERMOSTAT
TSP	TOTAL STATIC PRESSURE	UL	UNDERWRITERS LABORATORY
TSTAT	THERMOSTAT	VAV	VARIABLE AIR VOLUME
UL	UNDERWRITERS LABORATORY	VFD	VARIABLE FREQUENCY DRIVE
VAV	VARIABLE AIR VOLUME	WB	WET-BULB (TEMPERATURE)
VFD	VARIABLE FREQUENCY DRIVE	WG	WATER GAGE
WB	WET-BULB (TEMPERATURE)	WPD	WATER SIDE PRESSURE DROP
WG	WATER GAGE	WIRED	WIRED
WPD	WATER SIDE PRESSURE DROP		
WIRED	WIRED		

MECHANICAL DRAWING INDEX	
SHEET NUMBER	SHEET NAME
M-001	MECHANICAL COVER SHEET
M-100	MECHANICAL DUCTWORK DEMOLITION BASEMENT PLAN OVERALL
M-100A	MECHANICAL DUCTWORK DEMOLITION BASEMENT PLAN AREA A
M-100B	MECHANICAL DUCTWORK DEMOLITION BASEMENT PLAN AREA B
M-100C	MECHANICAL DUCTWORK DEMOLITION BASEMENT PLAN AREA C
M-100D	MECHANICAL DUCTWORK DEMOLITION BASEMENT PLAN AREA D
M-101	MECHANICAL PIPING DEMOLITION BASEMENT PLAN OVERALL
M-101A	MECHANICAL PIPING DEMOLITION BASEMENT PLAN AREA A
M-101B	MECHANICAL PIPING DEMOLITION BASEMENT PLAN AREA B
M-101C	MECHANICAL PIPING DEMOLITION BASEMENT PLAN AREA C
M-101D	MECHANICAL PIPING DEMOLITION BASEMENT PLAN AREA D
M-102	MECHANICAL ZONING BASEMENT PLAN OVERALL
M-100	MECHANICAL DUCTWORK BASEMENT PLAN OVERALL
M-100A	MECHANICAL DUCTWORK BASEMENT PLAN AREA A
M-100B	MECHANICAL DUCTWORK BASEMENT PLAN AREA B
M-100C	MECHANICAL DUCTWORK BASEMENT PLAN AREA C
M-100D	MECHANICAL DUCTWORK BASEMENT PLAN AREA D
MPI-00	MECHANICAL PIPING BASEMENT PLAN OVERALL
MPI-00A	MECHANICAL PIPING BASEMENT PLAN AREA A
MPI-00B	MECHANICAL PIPING BASEMENT PLAN AREA B
MPI-00C	MECHANICAL PIPING BASEMENT PLAN AREA C
MPI-00D	MECHANICAL PIPING BASEMENT PLAN AREA D
M-501	MECHANICAL DETAILS
M-601	MECHANICAL SCHEDULES



301 East Vine Street
Lexington, Kentucky 40507
859.252.6781

RESERVED FOR AHJ STAMP

KLH ENGINEERS

KOHRS LONNEMANN HEIL ENGINEERS, INC.

MECHANICAL/ELECTRICAL ENGINEERS

WWW.KLHENGRS.COM

1538 ALEXANDRIA PIKE, SUITE 11
FT. THOMAS, KENTUCKY 41075
800-564-9783
859-442-8050
859-442-8058 FAX

BID DOCUMENTS
UK WT YOUNG LIBRARY - LOWER LEVEL RENOVATION
 UNIVERSITY OF KENTUCKY
 LEXINGTON, KENTUCKY

MECHANICAL		
PROJECT	202586	
DATE	03.31.2026	
REVISIONS		
No.	Description	Date
1	ADDENDUM 3	04/16/26

JRA ARCHITECTS HAS RETAINED AN ELECTRONIC VERSION OF THESE DRAWINGS. THE CLIENT AGREES NOT TO REUSE THESE DRAWINGS IN ELECTRONIC OR ANY OTHER FORMAT - PRINTABLE OR PLOT - FOR ANY PURPOSE OTHER THAN FOR THE PROJECT. THE CLIENT AGREES NOT TO REUSE THESE ELECTRONIC FILES OR PRINTS WITHOUT THE PRIOR WRITTEN CONSENT OF THE ARCHITECT. THE CLIENT FURTHER AGREES TO WAIVE ALL CLAIMS AGAINST THE ARCHITECT RELATING IN ANY WAY FROM ANY UNAUTHORIZED CHANGES TO OR REUSE OF THE ELECTRONIC FILES FOR ANY OTHER PROJECT BY ANYONE OTHER THAN THE ARCHITECT.

MECHANICAL COVER SHEET

M-001

COPYRIGHT 2025 - JRA, INC.

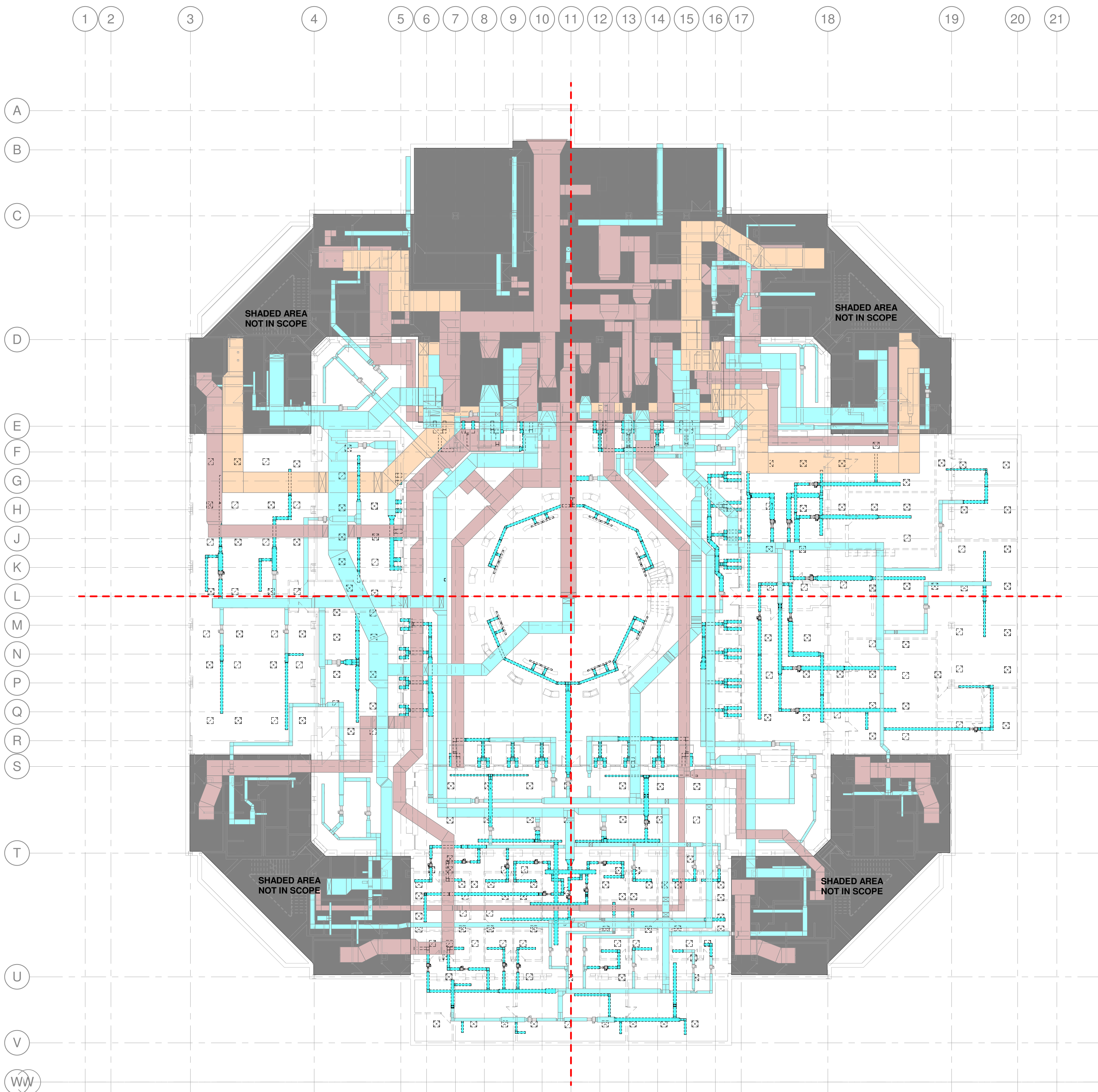
SEVERAL AREAS OUTSIDE OF THE SCOPE OF WORK NEED TO BE BALANCED PRIOR TO COMMENCEMENT OF ANY DEMOLITION IN ORDER TO RE-BALANCE THEM IN THE NEW CONSTRUCTION PHASE - SEE SHEETS MD100A THROUGH MD100D FOR ADDITIONAL INFORMATION.

INFORM FACILITIES MANAGEMENT CONTROLS ENGINEERING OF ALL VAVs AND/OR THERMOSTATS TAKEN OUT OF SERVICE DURING THIS SCOPE OF WORK.

INTENT IS THAT HVAC WORK IS PHASED SUCH THAT THE OUT OF SCOPE AREAS WHICH ARE SERVED BY THE AHUs SERVING THE REMODELED AREA SHALL CONTINUE TO RECEIVE CONDITIONING DURING THIS SCOPE OF WORK - HVAC CONTRACTOR TO PROVIDE TEMPORARY SERVICE IN THEIR BIDDING IF THEY ARE OF THE OPINION THAT IT WILL BE REQUIRED TO MAINTAIN COOLING TO IT ROOMS AND ROOMS CONTAINING FIRE ALARM PANELS WHICH ARE WITHIN THE SHADED AREAS.

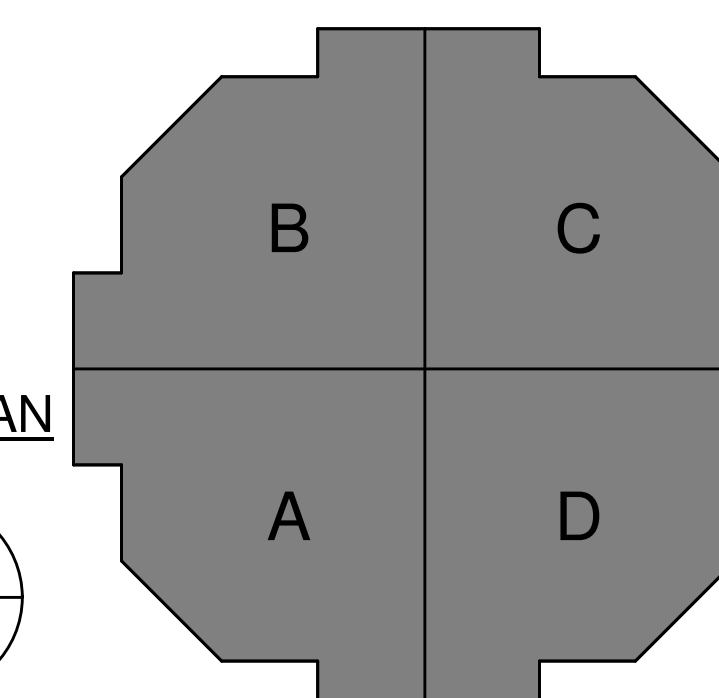
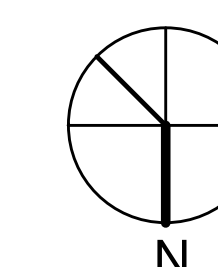
ALL THERMOSTATS WITHIN THE SCOPE OF WORK TO BE REMOVED AND REPLACED IN NEW WORK PHASE.

EXISTING N2 BUS MUST REMAIN INTACT THROUGHOUT THE REMODEL.



1 MECHANICAL DEMOLITION PLAN - BASEMENT - OVERALL
1/16" = 1'-0"

KEY PLAN



301 East Vine Street
Lexington, Kentucky 40507
859.252.6781

RESERVED FOR AHJ STAMP



KOHR'S LONNEMANN HEIL
ENGINEERS, INC.
MECHANICAL/ELECTRICAL
ENGINEERS
WWW.KLHENGRS.COM

1538 ALEXANDRIA PIKE, SUITE 11
FT. THOMAS, KENTUCKY 41075
800-564-9783
859-442-8050
859-442-8058 FAX

BID DOCUMENTS
UK WT YOUNG LIBRARY - LOWER
LEVEL RENOVATION
UNIVERSITY OF KENTUCKY
LEXINGTON, KENTUCKY

MECHANICAL

PROJECT 202586

DATE 03.31.2026

REVISIONS

No.	Description	Date
1	ADDENDUM 3	04/16/26

JRA ARCHITECTS HAS RETAINED AN ELECTRONIC VERSION OF THESE DRAWINGS. THE CLIENT AGREES NOT TO REUSE THESE DRAWINGS IN ELECTRONIC OR ANY OTHER FORMAT IN WHOLE OR IN PART FOR ANY PURPOSE OTHER THAN FOR THE PROJECT. THE CLIENT AGREES NOT TO TRANSMIT THESE ELECTRONIC FILES TO OTHERS WITHOUT THE PRIOR WRITTEN CONSENT OF THE ARCHITECT. THE CLIENT FURTHER AGREES TO WAIVE ALL CLAIMS AGAINST THE ARCHITECT RESULTING IN ANY WAY FROM ANY UNAUTHORIZED CHANGES TO OR REUSE OF THE ELECTRONIC FILES FOR ANY OTHER PROJECT BY ANYONE OTHER THAN THE ARCHITECT.

MECHANICAL
DUCTWORK
DEMOLITION
BASEMENT
PLAN OVERALL

MD100

COPYRIGHT 2025 - JRA, INC.

KLH PROJECT #: 27887

Sheet MD100 – Mechanical Ductwork Demolition Basement Plan Overall

- a. Text note revised from “Delta Center” to “Facilities Management Controls Engineering” based on UK review comment.
- b. Added requirement that N2 bus must remain intact to notes on sheet based on UK comments.

END OF ADDENDUM NO. 4.00