



University of Kentucky[®]

Procurement Services

INVITATION FOR BIDS
CCK-2809.0-1-24
Hospital Drive Water Line Replacement
PROJECT # 2809.0
ADDENDUM # 1
[04/19/2024]

IMPORTANT: BID AND ADDENDUM MUST BE RECEIVED BY 05-14-2024 @ 3:00 P.M. LEXINGTON, KY TIME

Bidder must acknowledge receipt of this and any addendum as stated in the Invitation for Bids.

ITEM #1: BIDDER NOTIFICATIONS

Lynn Imaging shows a link to a Zoom meeting for the prebid, but there is no Zoom option per the front ends. Please plan to meet onsite at Med Ctr. Cooling Tower (151 Hospital Drive) at 10:00AM on Monday, 04/22/2024 for the prebid meeting. A site visit will immediately follow. The prebid meeting and site visit are voluntary; however, bidders are reminded that they affirm firsthand knowledge of the conditions when tendering a bid.

ITEM #2: CLARIFICATIONS AND MODIFICATIONS TO THE CONTRACT DOCUMENTS

To eliminate any ambiguity, the SC date is calculated as 180 days from the Notice to Proceed.

Bidders are to reference the enclosed Site sheets and incorporate that information in their bids.

OFFICIAL APPROVAL
UNIVERSITY OF KENTUCKY

Corey W. Leslie / AD Construction Procurement

SIGNATURE

Typed or Printed Name

University of Kentucky
Procurement Services
322 Peterson Service Building
Lexington, KY 40506-0005

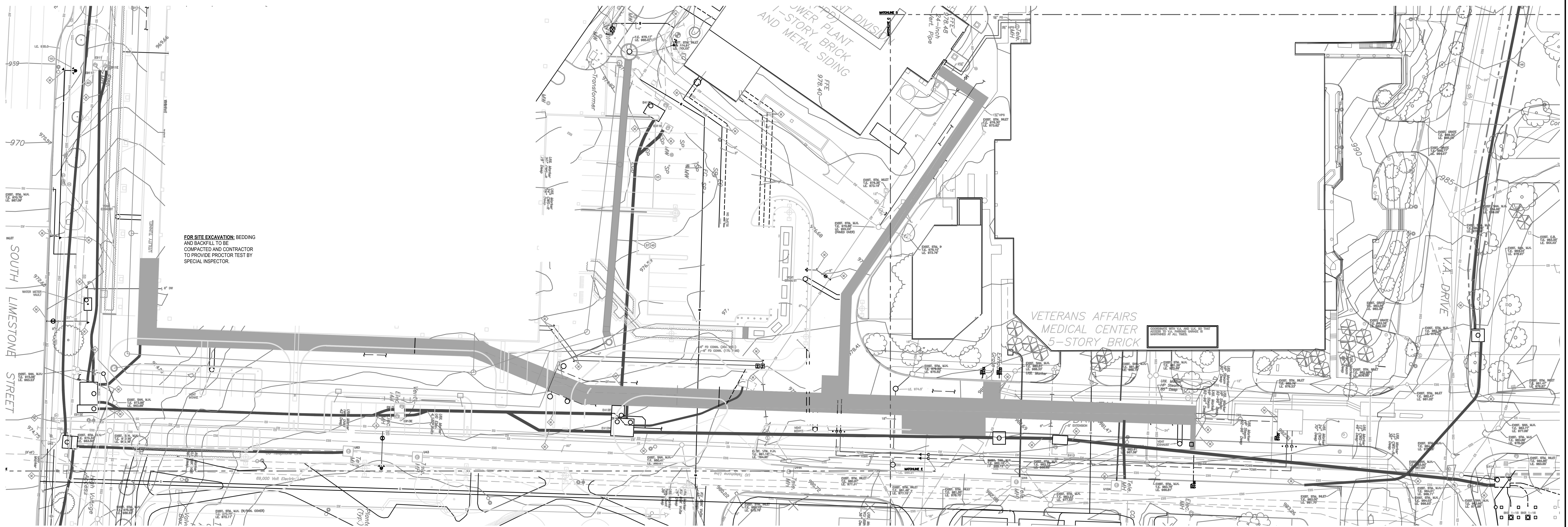
PROJECT GENERAL NOTES

- A. REMOVE ALL UNUSED PIPING, DUCTWORK AND ACCESSORIES.
- B. THE MECHANICAL CONTRACTOR SHALL BE RESPONSIBLE FOR FIELD VERIFYING, PRIOR TO FINAL BID, ALL EXISTING CONDITIONS FOR PLUMBING AND MECHANICAL SYSTEMS WITHIN TENANT SPACE AND WITHIN CLOSE PROXIMITY OF TENANT SPACE.
- C. WHERE FLOOR DRAINS OCCUR WITHIN THE LIMITS OF CONSTRUCTION, PREVENT CONSTRUCTION DEBRIS FROM ENTERING DRAIN BODY BY SEALING DRAIN OPENING PRIOR TO START OF WORK.
- D. COORDINATE INSTALLATION OF PIPING, DUCTWORK, CONDUIT, LIGHTS, CABLE TRAY, STRUCTURE, AND EQUIPMENT TO PREVENT CONFLICTS.
- E. THE CONTRACTOR SHALL BE FAMILIAR WITH ALL THE CONDITIONS BOTH EXISTING AND THOSE ILLUSTRATED BY THESE DOCUMENTS AS WELL AS THOSE WHICH CAN BE REASONABLY ANTICIPATED INCLUDING, BUT NOT LIMITED TO ARCHITECTURAL, ELECTRICAL, VENTILATION, PLUMBING, AND OTHER SYSTEMS INVOLVED ON THIS PROJECT.
- F. FINAL PRODUCT SHALL BE A COMPLETE AND FUNCTIONING SYSTEM, AND SHALL CONFORM TO ALL REQUIREMENTS OF APPLICABLE FEDERAL, STATE, AND LOCAL CODES, INCLUDING BUT NOT LIMITED TO THE INTERNATIONAL BUILDING CODE AND INTERNATIONAL MECHANICAL CODE.
- G. LOCATE EQUIPMENT REQUIRING ACCESS 2'-0" MAXIMUM ABOVE CEILING.
- H. ALL ROOF MOUNTED EQUIPMENT SHALL BE A MINIMUM 1'-0" FROM EDGE OF ROOF.
- I. LOCATE DUCTWORK, PIPING AND MECHANICAL EQUIPMENT AWAY FROM THE SPACE ABOVE ELECTRICAL PANELS, TRANSFORMERS AND OTHER ELECTRICAL EQUIPMENT.
- J. FIRE SEAL AROUND DUCT AND PIPING PENETRATIONS OF FIRE RATED WALLS. REFER TO SPECIFICATION.
- K. ADJUST PIPING AND DUCTWORK SIZES TO PROPERLY CONNECT TO MECHANICAL EQUIPMENT.
- L. REFER TO PLUMBING SERIES DRAWINGS FOR GAS AND A.C. CONDENSATE DRAIN PIPING.
- M. PIPE SIZES SHOWN SHALL BE CONTINUED IN THE DIRECTION OF FLOW UNTIL ANOTHER SIZE IS SHOWN.
- N. FOR DETAILS, EQUIPMENT CONNECTIONS, AND PIPE SIZES NOT SHOWN, ON THE SEGMENTS, REFER TO DETAILS, SCHEDULES, AND SPECIFICATIONS.
- O. INSTALL ALL EQUIPMENT IN ACCORDANCE WITH THE RESPECTIVE MANUFACTURER'S WRITTEN INSTALLATION INSTRUCTIONS, AT A LEVEL OF QUALITY AND WORKMANSHIP CONSISTENT WITH THE SPECIFICATIONS.
- P. LOCATIONS OF PIPING, DUCTWORK AND EQUIPMENT AS INDICATED ON THE DRAWING ARE APPROXIMATE AND SUBJECT TO MINOR ADJUSTMENTS IN THE FIELD. WORK SHALL BE COORDINATED WITH ALL OTHER TRADES TO AVOID INTERFERENCE IN THE FIELD.
- Q. INSTALL EXPOSED PIPING AND DUCTWORK AS HIGH AS PRACTICAL IN ROOMS WITHOUT CEILINGS.

EROSION PREVENTION AND SEDIMENT CONTROL PLAN

EROSION PREVENTION AND SEDIMENT CONTROL PLAN IS REQUIRED FOR LINEAR UTILITY PROJECTS THAT DISTURB 500 FEET OR MORE OF UNPAVED LAND SURFACE. BMPs SHOULD BE PROVIDED TO PROTECT THE EXISTING PAVEMENT IN PROXIMITY TO THE CONSTRUCTION AND THE DISTURBANCE OF THE EXISTING PAVEMENT SHOULD BE ADDRESSED. THIS PLAN WILL NEED TO BE SUBMITTED TO EOM FOR REVIEW AND APPROVAL PRIOR TO START OF CONSTRUCTION.

STORMWATER POLLUTION PREVENTION PLAN IS NOTE REQUIRED SINCE SITE IS < 1 ACRE.

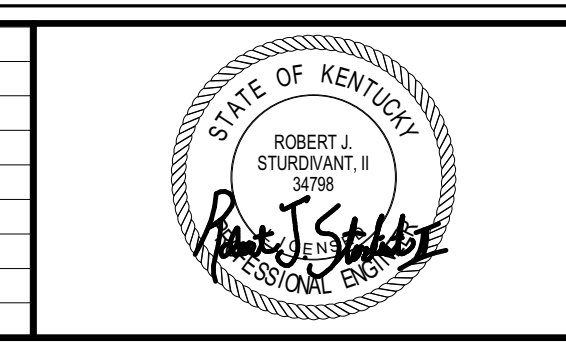


NOTE:
IT IS NOT INTENDED THAT THE PLANS SHOW ALL OFFSETS IN PIPES, CONDUITS, AND DUCTS REQUIRED FOR INSTALLATION OF THE WORK. DETAILS AND SECTIONS ARE INCLUDED FOR SOME AREAS TO SHOW INTENDED RELATIONSHIP OF THE WORK OF VARIOUS TRADES. IT SHALL BE THE RESPONSIBILITY OF THE CONTRACTOR AND SUB-CONTRACTORS TO COORDINATE INSTALLATION OF THE WORK AND TO PROVIDE THE NECESSARY OFFSETS, TRANSFORMATIONS, AND FITTINGS REQUIRED. NO ADDITIONAL COMPENSATION WILL BE ALLOWED FOR CORRECTION CONFLICTS BETWEEN THE WORK OF VARIOUS TRADES. DETAILS AND SECTIONS ARE SHOWN FOR THE CONTRACTORS CONVENIENCE AND SHALL NOT BE CONSIDERED COMPLETE IN EVERY DETAIL.

CONFIDENTIAL
Confidential and Proprietary Information. These documents may not be used or reproduced without the express written consent of Karges-Faulconbridge, Inc.

Autodesk_Docs\25125_1313 - UK Hospital Drive Water Line Replacement\MEP25_1313 Hospital Dr Water Line Replacement.rvt 4/22/24 4:53:07 PM

No.	Date:	By:	Revision:



2343 Alexandria Drive
Suite 200
Lexington, KY 40504
Tel: 859-271-3246
Email: kfi@kfi-eng.com



KFI ENGINEERS

Project Title: **HOSPITAL DRIVE WATER LINE REPLACEMENT**
HOSPITAL DRIVE,
LEXINGTON, KENTUCKY

Sheet Title: **SITE PLAN**

Date:	04/22/24	Revision Number:	
Drawn By:	RJS	Sheet Number:	S
Checked By:	DHB		
Project No.:	23-1313		
DWG Scale:	AS NOTED		
Sheet Size:	30x42		