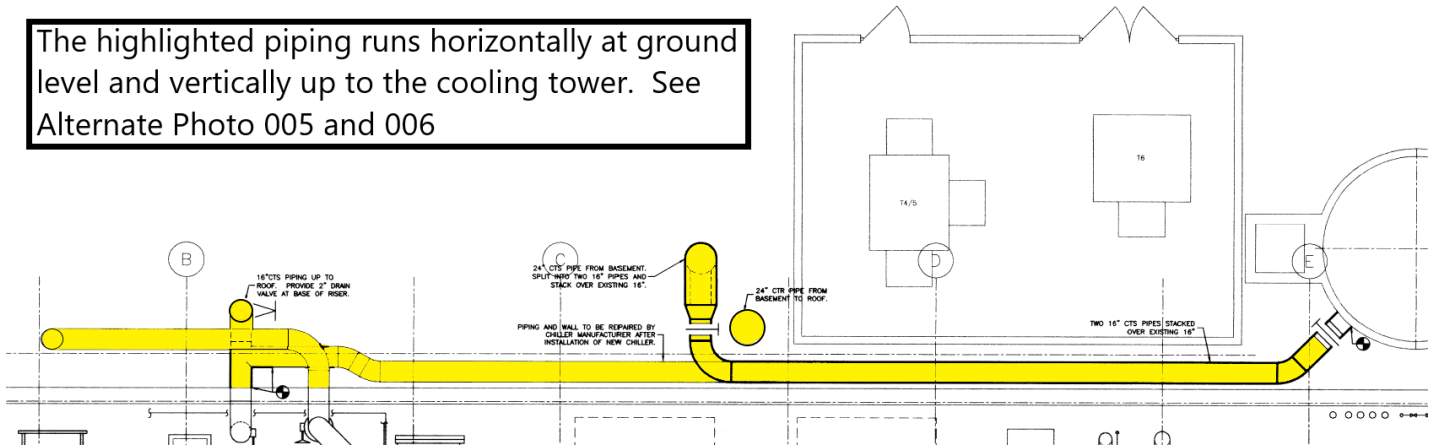


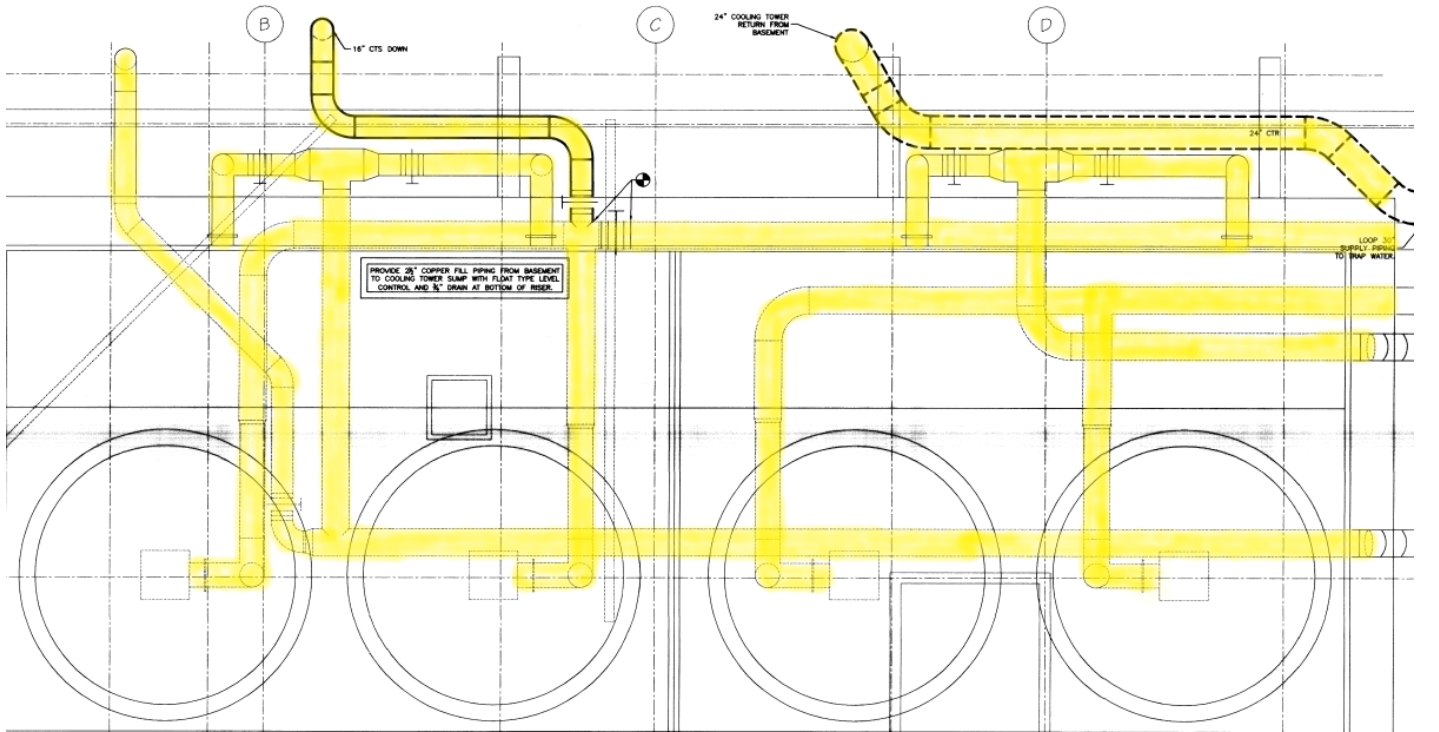
Existing Steel Framing Section View

The highlighted piping runs horizontally at ground level and vertically up to the cooling tower. See Alternate Photo 005 and 006



Alternate 1 – Plan View – Northeast Face of Structure

The highlighted piping runs horizontally under the cooling towers on the roof and down the side of the building. See Alternate photo 001, 002, 003 and 004.



Alternate 1 – Plan View - Roof



*Photo 001 Overview of Northeast Face of Structure
Rust and spalling paint were observed at the four exposed columns and vertical lateral
braces. They mainly occurred on the face of the column webs and brace flanges.*



Photo 002

At the column to girder connection, paint peeled off from the member webs. The girder flanges and column stiffener plates were delaminated.



Photo 003

At the column to girder connection, paint peeled off from the member webs. The girder flanges and column stiffener plates were delaminated.



Photo 004

At the column to girder connection where the girder entered the existing building, girder flanges were delaminated.



Photo 005

Along the northwest face of the structure, both primary framing and minor framing corroded severely. The flanges of girder were delaminated.



Photo 006

Along the northwest face of the structure, the minor framing corroded severely.



Photo 007

Along the northeast face of the structure, the channels bracing pipes corroded severely.



Photo 008

The minor framing below the cooling tower pan corroded severely.



Photo 009

The minor framing below the cooling tower pan corroded severely.



Photo 010

The primary framing, including steel girders and braces, corroded severely below the cooling tower pan where water leaked.



Photo 011

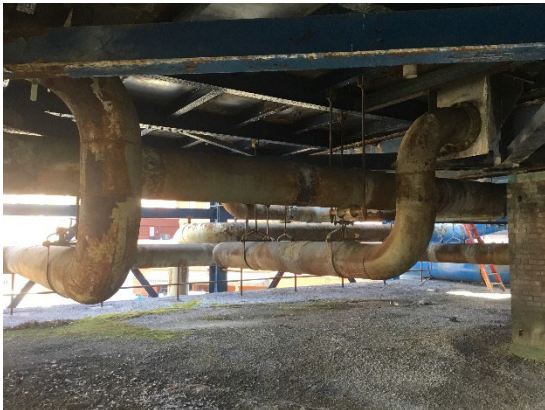
Both primary framing and minor framing braces corroded where water leaked from the cooling pan above.



Alternate Photo 001



Alternate Photo 002



Alternate Photo 003



Alternate Photo 004



Alternate Photo 005



Alternate Photo 006