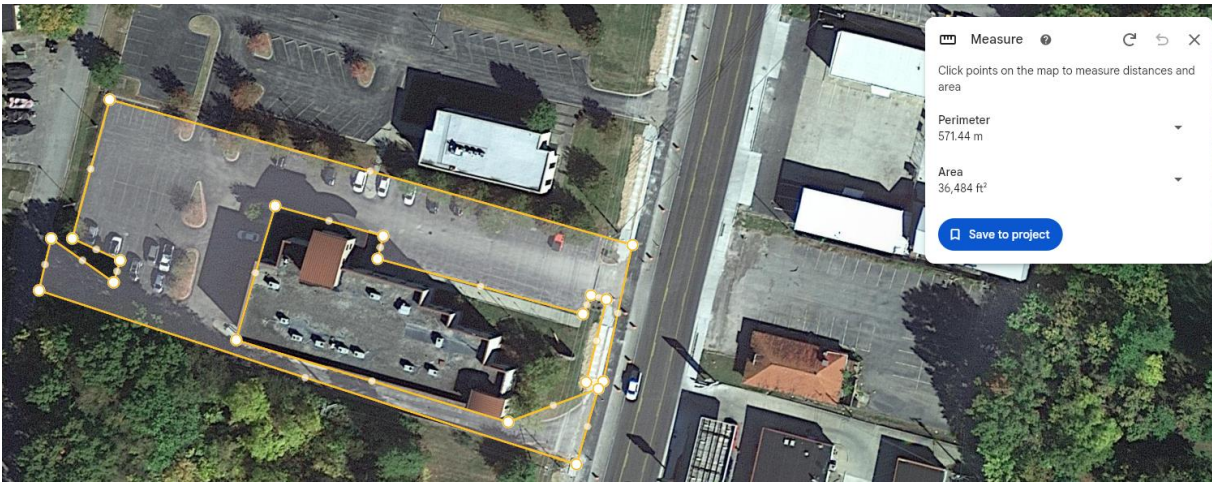


Exhibit A

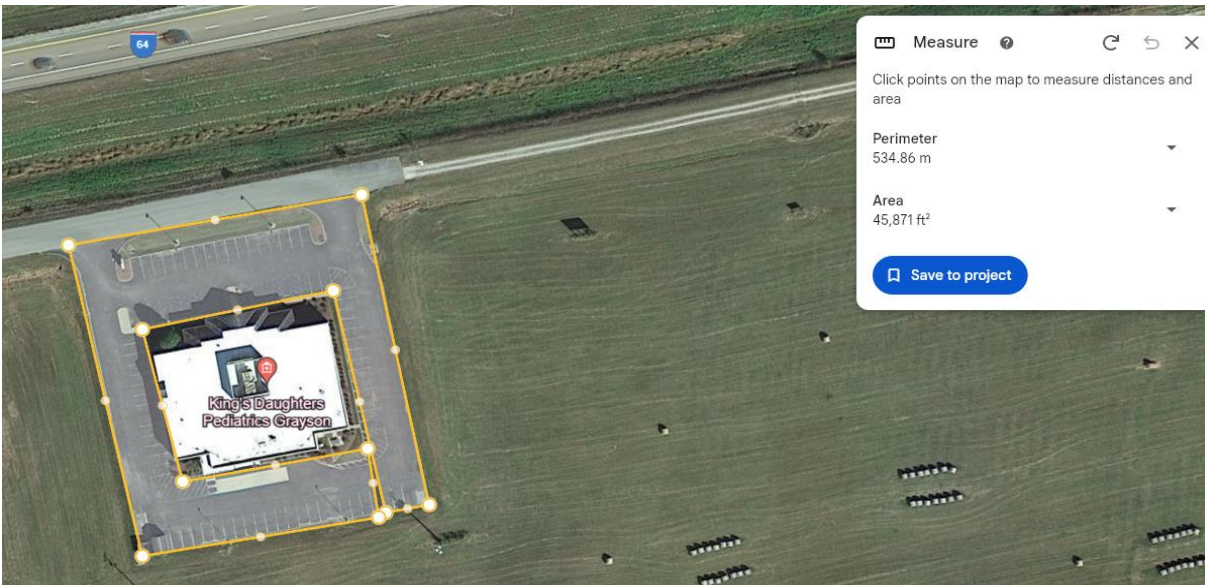
Zone 1	
Grayson Urgent Care - 609 S. Carol Malone Blvd.	Mon-Fri 8am-9pm Sat-Sun 9am-9pm
Grayson Primary Care - 100 Bellefonte Dr.	Mon-Fri 8am-6pm Sat. 8am-4pm
Carter Co. Primary/ Dr. Adkins - 105 KY Route 1947	Mon-Fri 8am-5pm
Zone 2	
Flatwoods Primary Care - 2420 Argilite Rd.	Mon-Fri 8am-6pm
Flatwoods Family Care - 1107 Bellefonte Rd	Mon-Sat 8am-8:30pm
Flatwoods Medical Specialties - 1109 Bellefonte Rd.	Mon-Thur 8am-4:30pm Fri 8am-noon
Behavioral Health Center - 1061 Kenwood Dr.	Mon-Fri 8am-4:30pm
Zone 3	
Bellefonte Pavilion - 2000 Ashland Drive (Includes 1 mile trail behind building)	24 Hour Coverage (Trail by 8 am)
Zone 4	
Cattlettsburg Family Care - 4004 Louisa Rd.	Mon-Thur 8am-5pm
Cornerstone Medical Plaza - 1816 Carter Ave.	Mon-Thur 8am-5:30pm Fri 8am-4pm
Dermatology/ Endocrinology/Healthy Living - 1200 Central Ave.	Mon-Fri 8am-6pm
Ashland Urgent Care/ Gynecology - 2245 Winchester Ave.	Mon-Fri 8am-9pm Sat-Sun 9am-9pm
Ashland Family Medicine - 2222 Winchester Ave. (Relocating to 2340 Carter Avenue effective 1/1/24)	Mon-Fri 8am-6pm
Ashland Primary Care - 2028 Winchester Ave.	Mon-Thur 8am-6pm
Women's Care - 2001 Winchester Ave.	Mon-Thur 8am-5pm Fri 8am-4pm
Ashland Coumadin Clinic - 2421 Winchester Ave.	Mon-Fri 8am-5:30pm
Specialty Pharmacy – 2548 Greenup Avenue	Mon-Fri 8am-4:30pm
Zone 5	
Louisa – 2145 KY 2565	
Zone 6	
Olive Hill Family Care - 391 W. Tom T. Hall Blvd.	Mon-Sat 8am-8pm
Zone 7	
Sandy Hook Family Care - 1908 N. KY Route 7	Mon-Fri 8am-5:30pm
Zone 8	
Prestonsburg Medical Specialties - 1279 Old Abbott Mtn Rd.	Mon-Thur 8am-7pm Fri 8am-4:30
Zone 9	
Wheelersburg Family Care - 8750 Ohio River Rd.	Mon-Thur 8am-6pm Fri 8am -2pm
David Provaznik D.O. - 11826 Gallia Pike	Mon-Thur 7am-5pm Fri 7am-noon
Zone 10	
Kinneys Lane Medical Specialties - 1729 Kinneys Lane Portsmouth	Mon-Fri 7am-5pm
Dr. Tsuyoshi Inoshita - 916 11th St. Portsmouth	Mon-Fri 8am-5pm
Zone 11	
Burlington Urgent Care/ Family Care - 384 County Rd. 120	Mon-Thur 7am-9pm Fri-Sun 9am-9pm
Ironton Urgent Care/ Family Care - 912 Park Ave.	Mon-Thur 7am-9pm Fri-Sun 9am-9pm
Zone 12	
Jackson Primary Care - 14395 State Route 93	Mon-Thur 7am-6pm Fri 7am-4:30pm
Zone 13	
Kingsbrook Lifecare Center – 2500 KY Route 5	24 Hour Service
Zone 14	
KDMC Ohio – 2001 Scioto Trail (Includes drive-thru)	24 Hour Service

Zone 1

Grayson Urgent Care (609 Carol Malone Blvd Grayson, KY) Approx. Measurement: 36,484 sq. ft.



Grayson Primary Care (100 Bellefonte Dr. Grayson, KY) Approx. Measurement: 45,871 sq. ft.

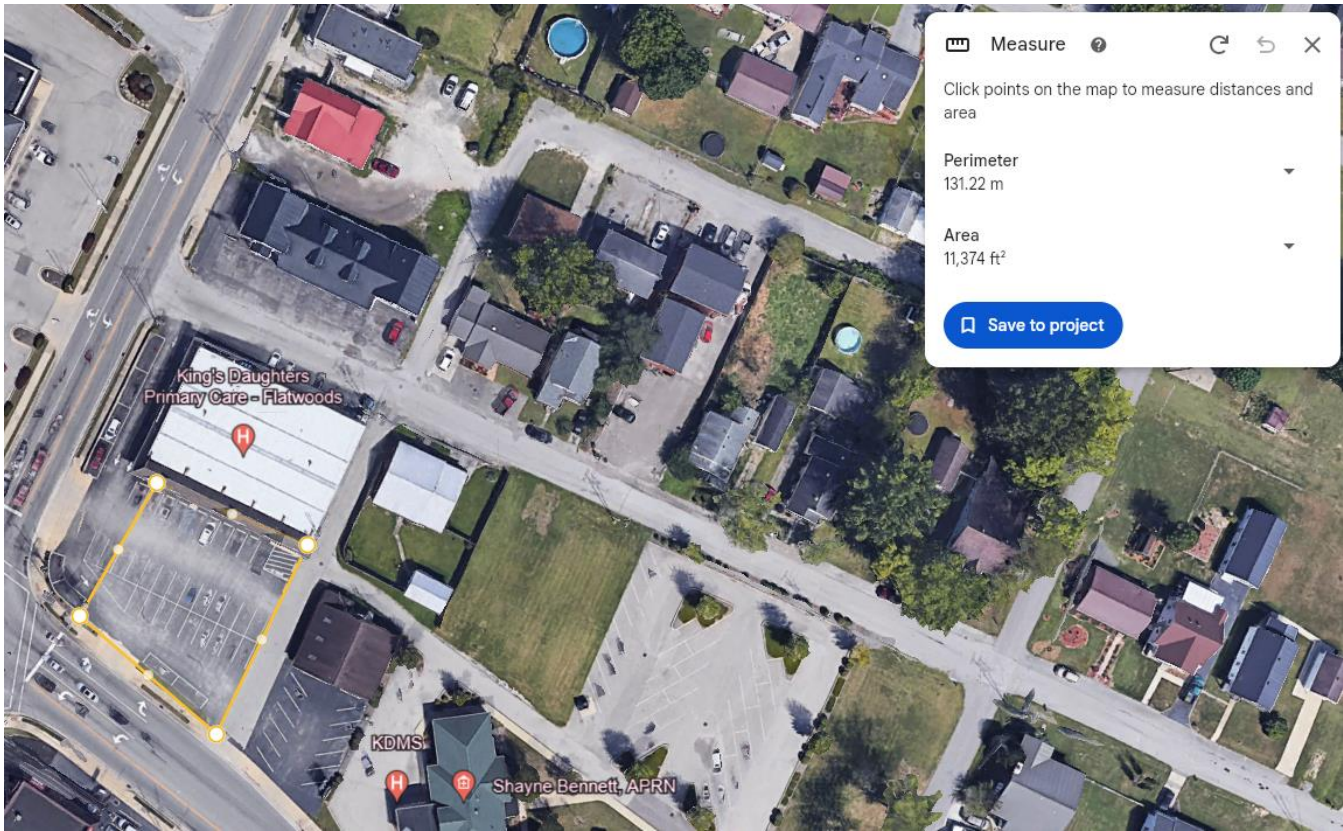


Carter Co. Primary / Dr. Adkins (105 KY Rt 1947 Grayson, KY) Approx. Measurement: 30,225 sq. ft.

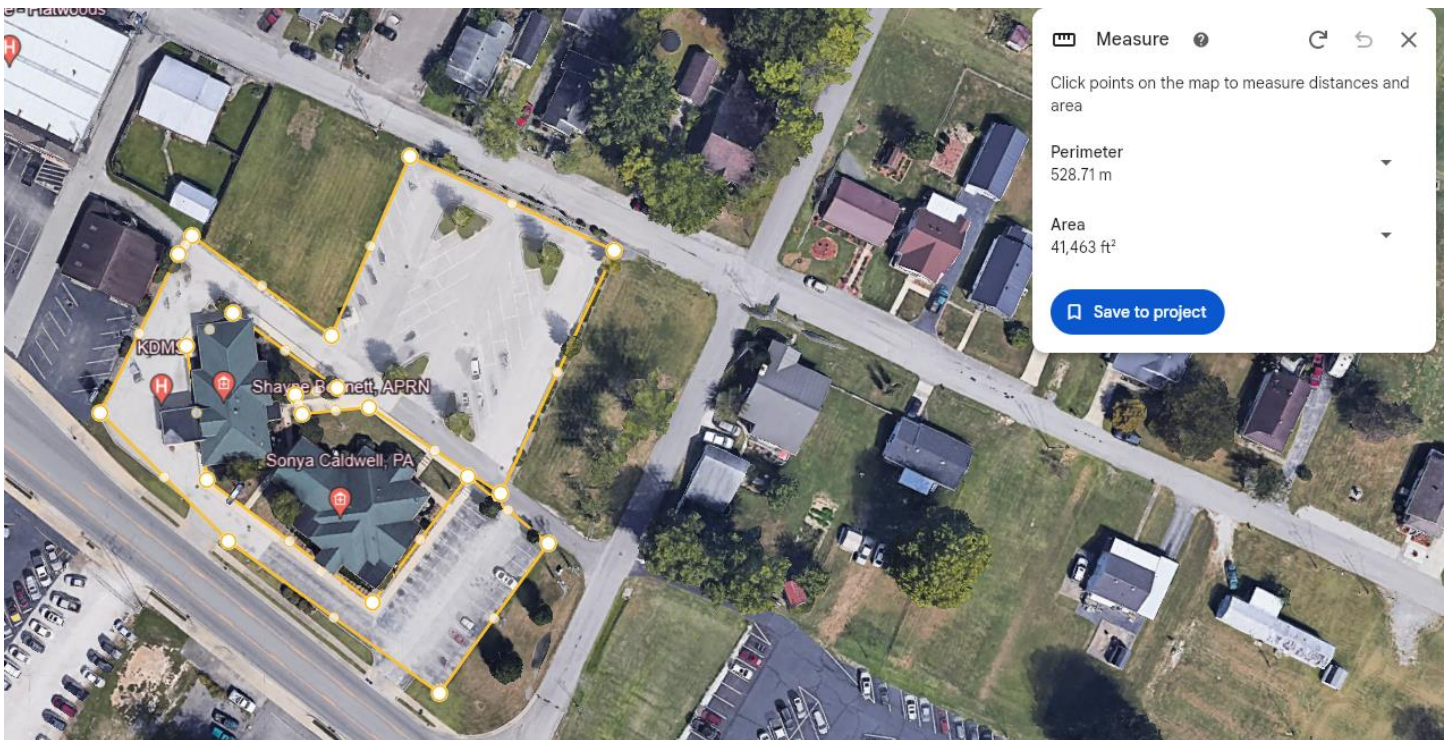


Zone 2

Flatwoods Primary Care (2420 Argilite Rd. Flatwoods, KY) Approx. Measurement: 11,374 sq. ft.

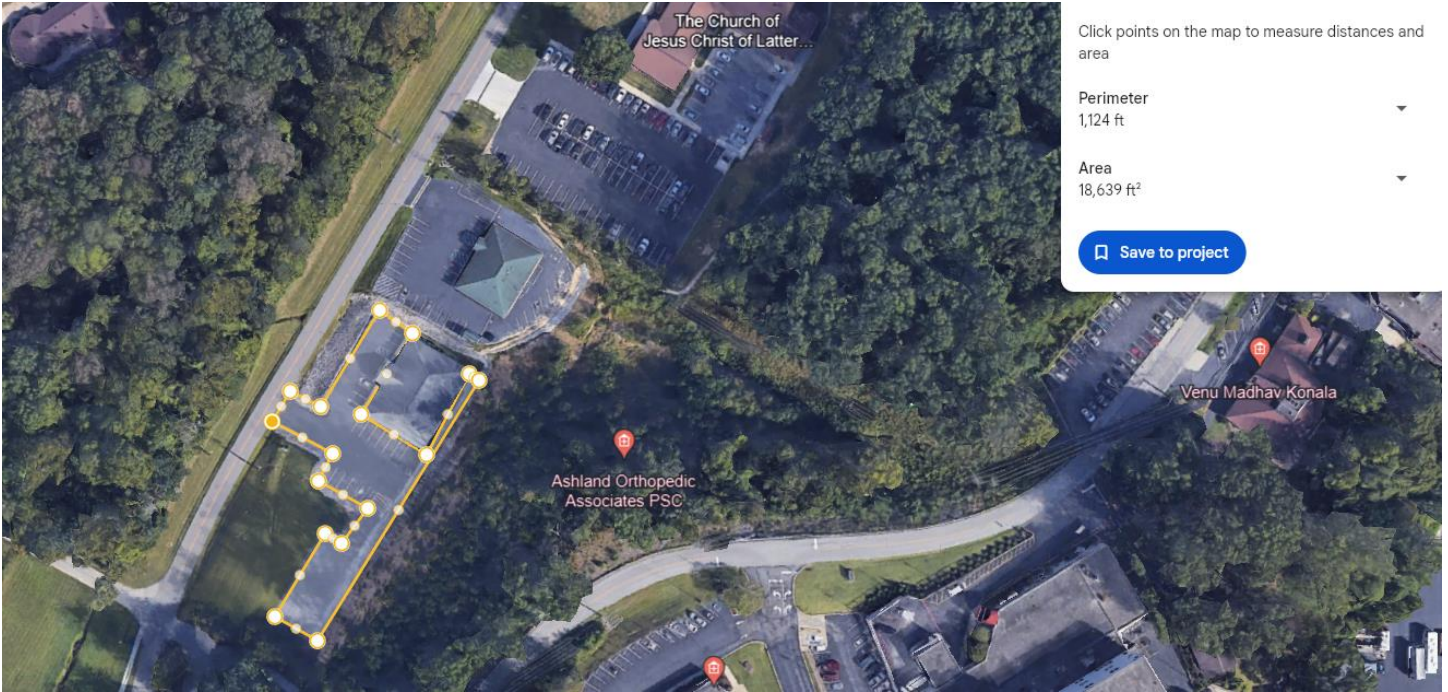


Flatwoods Family Care & Medical Specialties (1107 & 1109 Bellefonte Rd) Approx. Measurement 41,463 sq. ft



Zone 2 (Cont.)

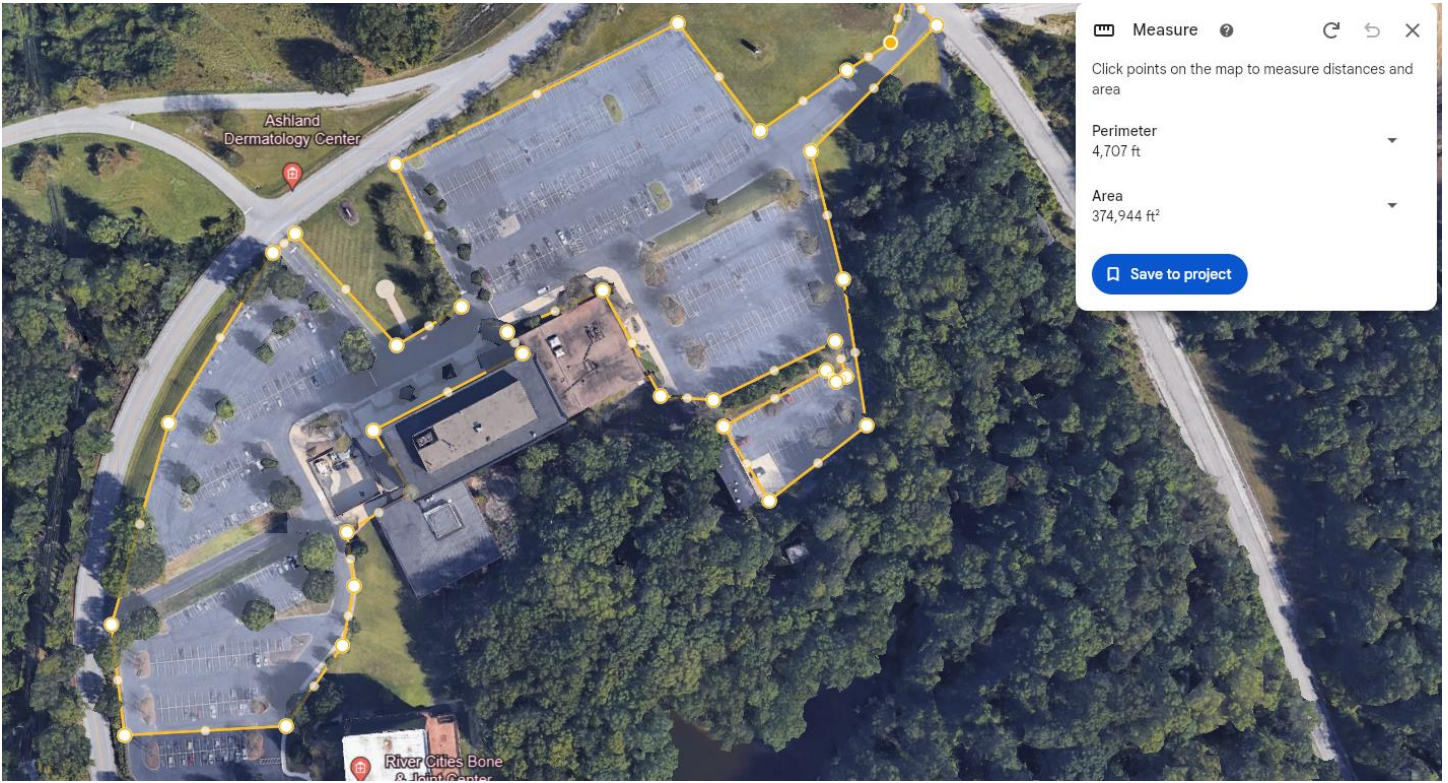
Behavioral Health Center (1061 Kenwood Dr. Russell, KY) Approx. Measurements 18,639 sq. ft.



Zone 3

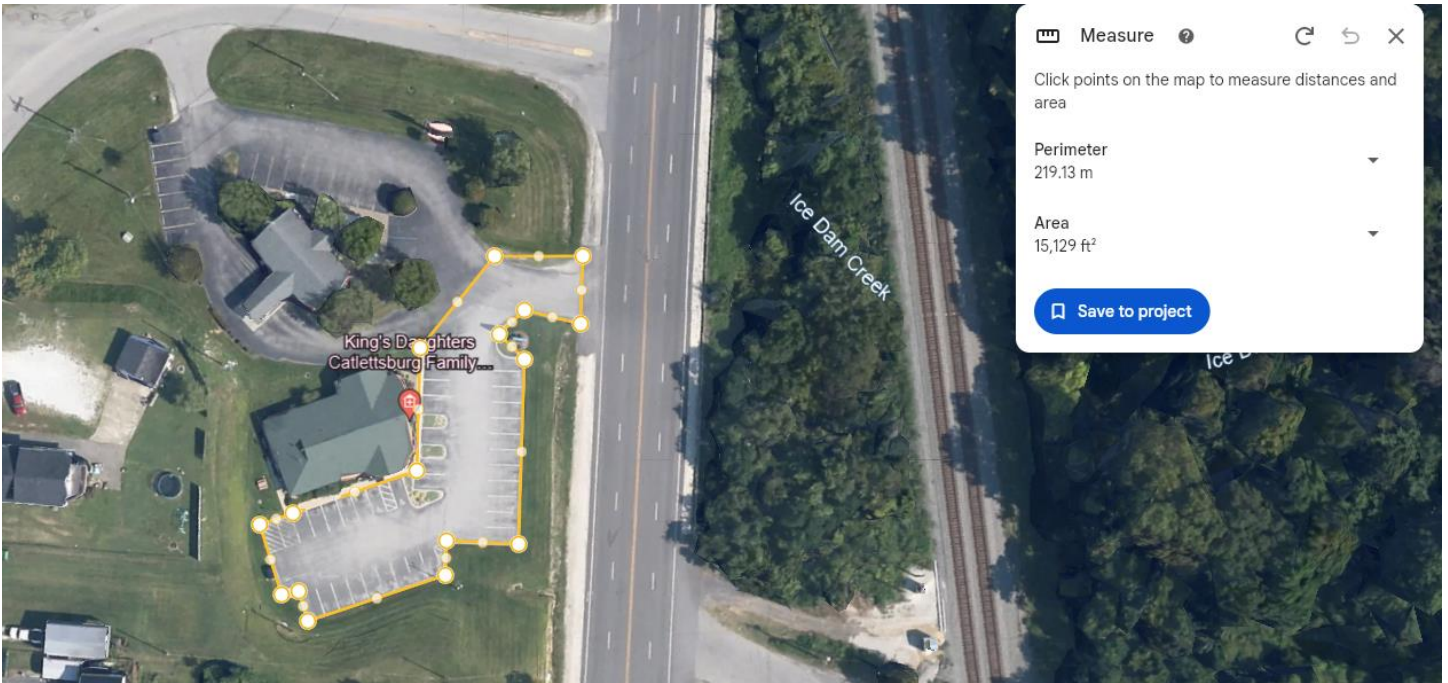
Bellefonte Pavilion (2000 Ashland Drive Russell, KY) Approx. Measurement: 374,944 sq. ft.

Contractor is also responsible for the 1 mile walking trail behind building that is not shown on the map

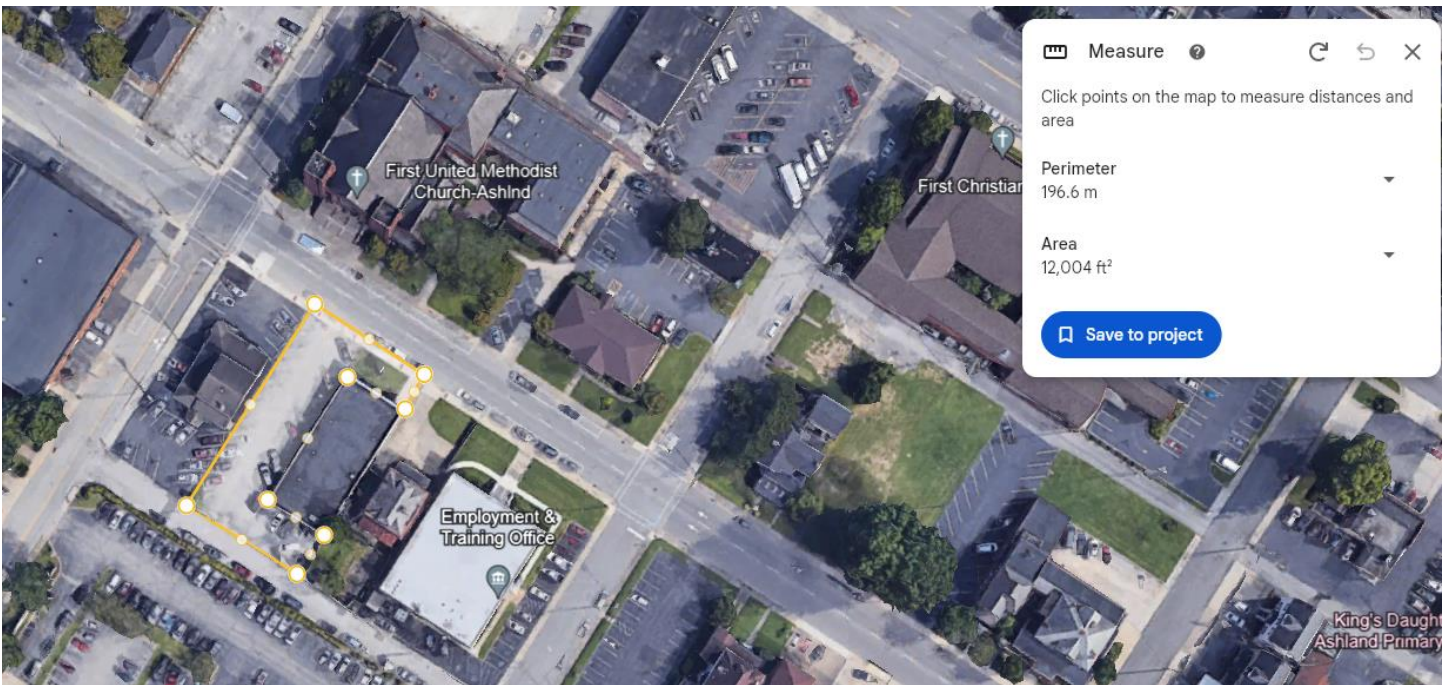


Zone 4

Catlettsburg Family Care (4004 Louisa Road Catlettsburg, KY) Approx. Measurement: 15,129 sq. ft.

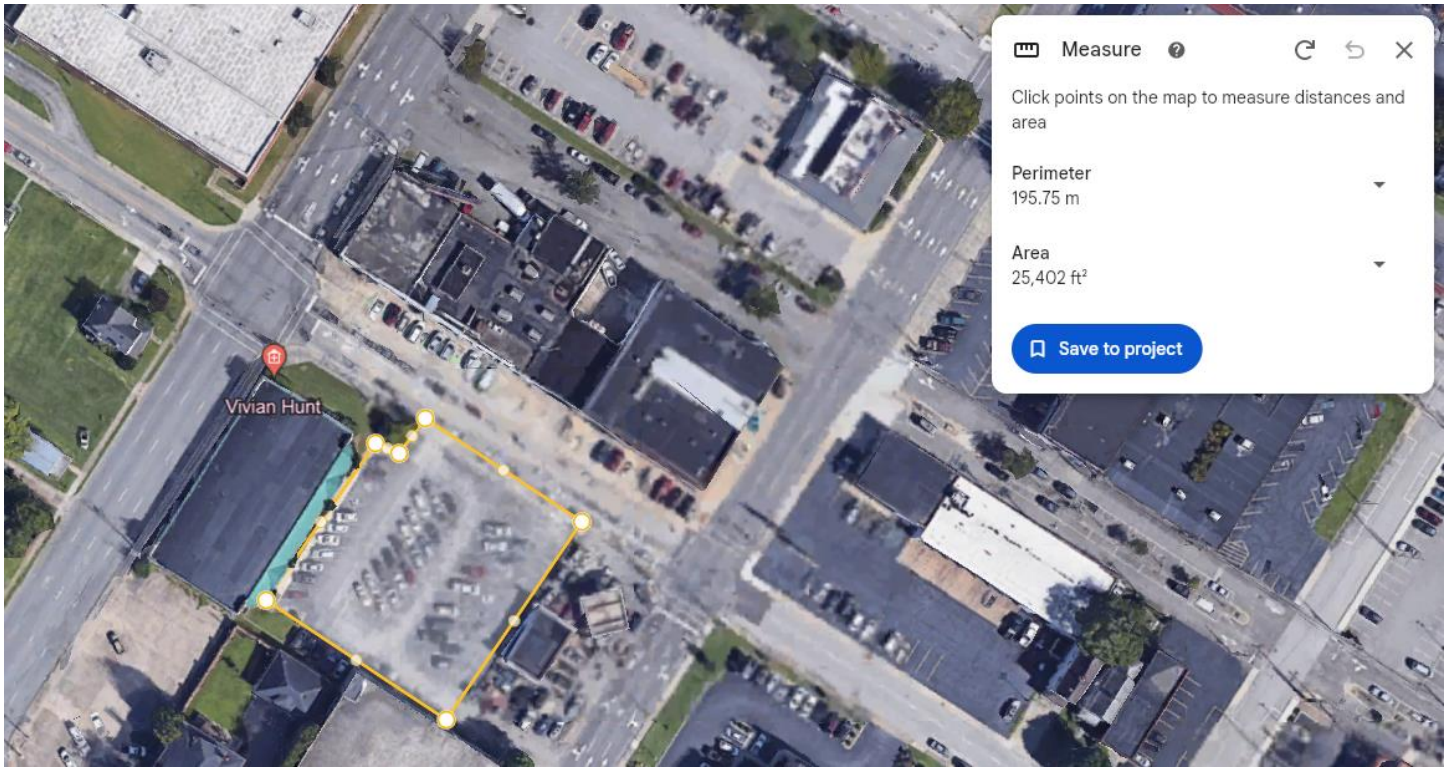


Cornerstone Medical Plaza (1816 Carter Ave. Ashland, KY) Approx. Measurement: 12,004 sq.ft.

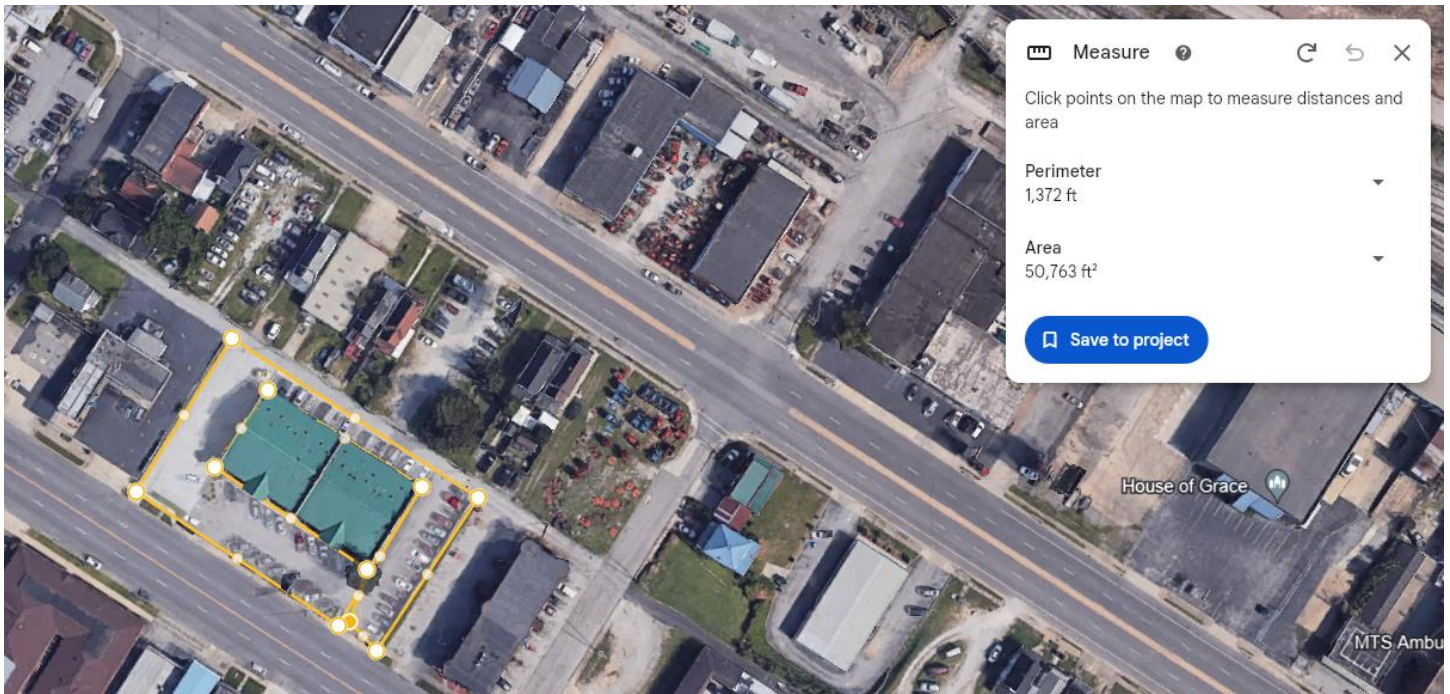


Zone 4 (Cont.)

Dermatology/Endocrinology/Healthy Living (1200 Central Avenue Ashland, KY) Approx. Measurement: 25,402 sq. ft.

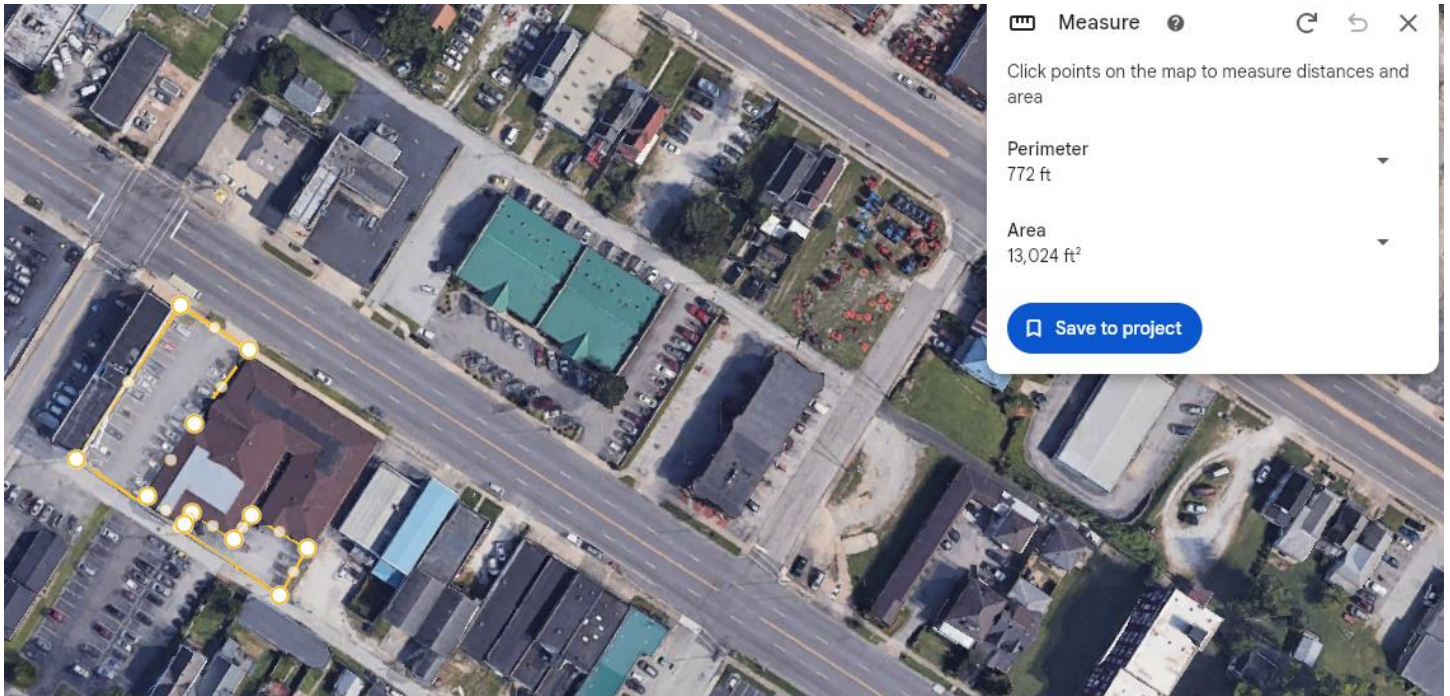


Ashland Urgent Care/Gynecology (2245 Winchester Ave. Ashland, KY) Approx. Measurement: 50,763 sq. ft.

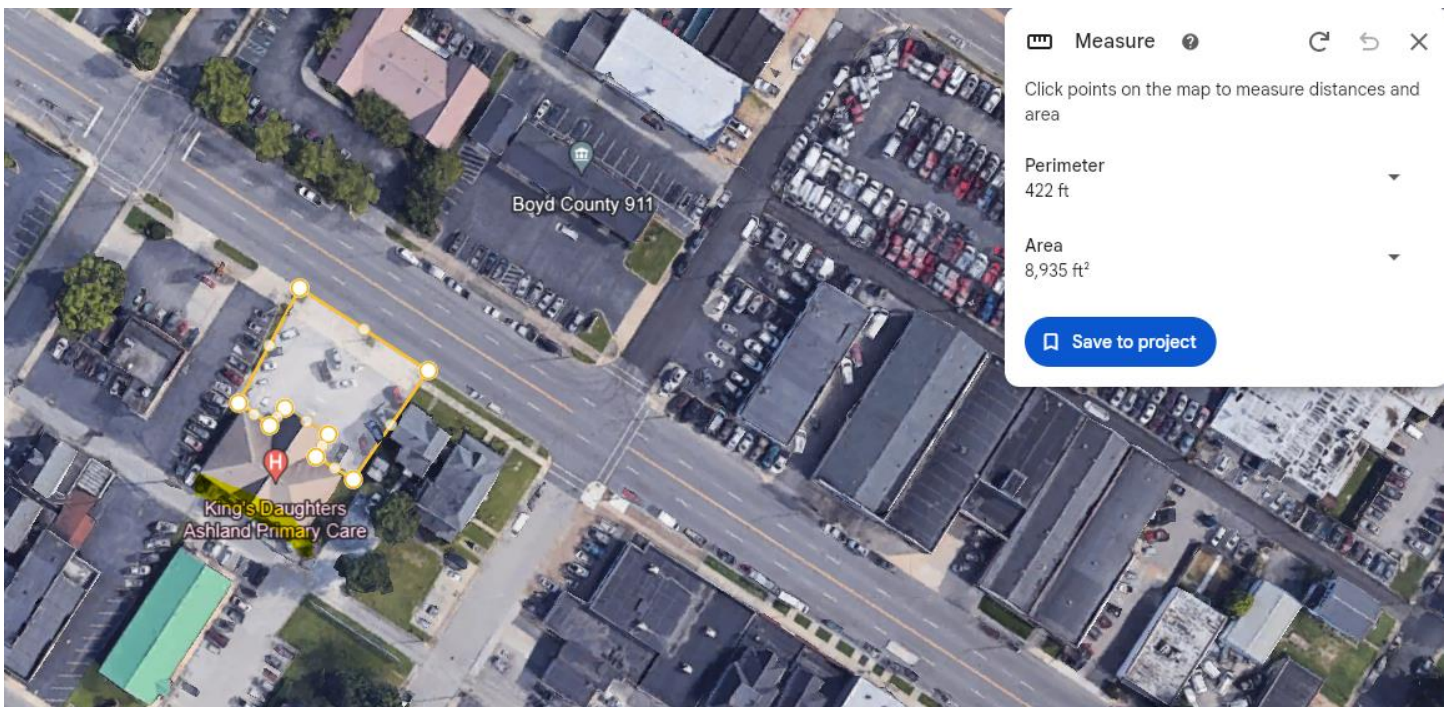


Zone 4 (Cont.)

Ashland Family Medicine (2222 Winchester Ave. Ashland, KY) Approx. Measurement: 13,024 sq. ft.

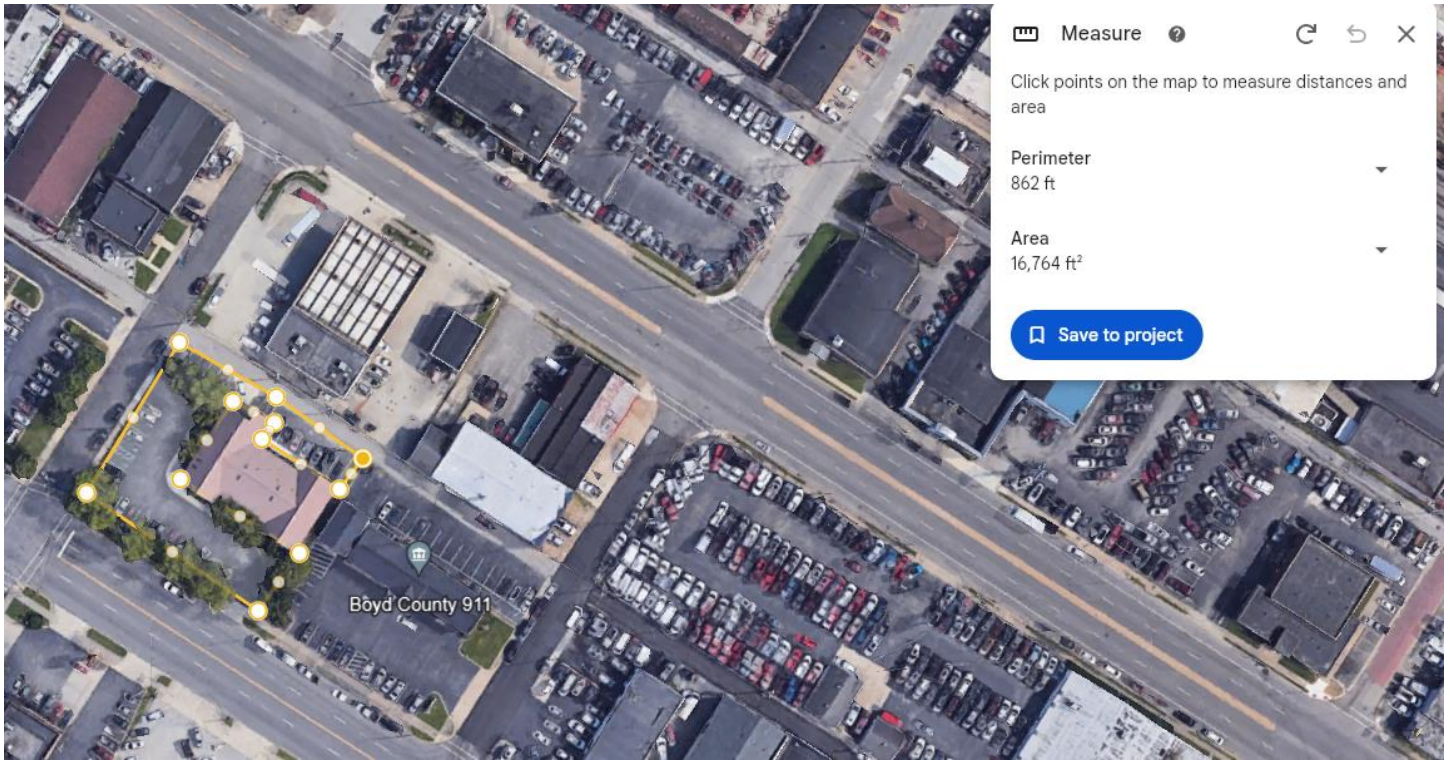


Ashland Primary Care (2028 Winchester Ave. Ashland, KY) Approx. Measurement: 8,935 sq. ft.

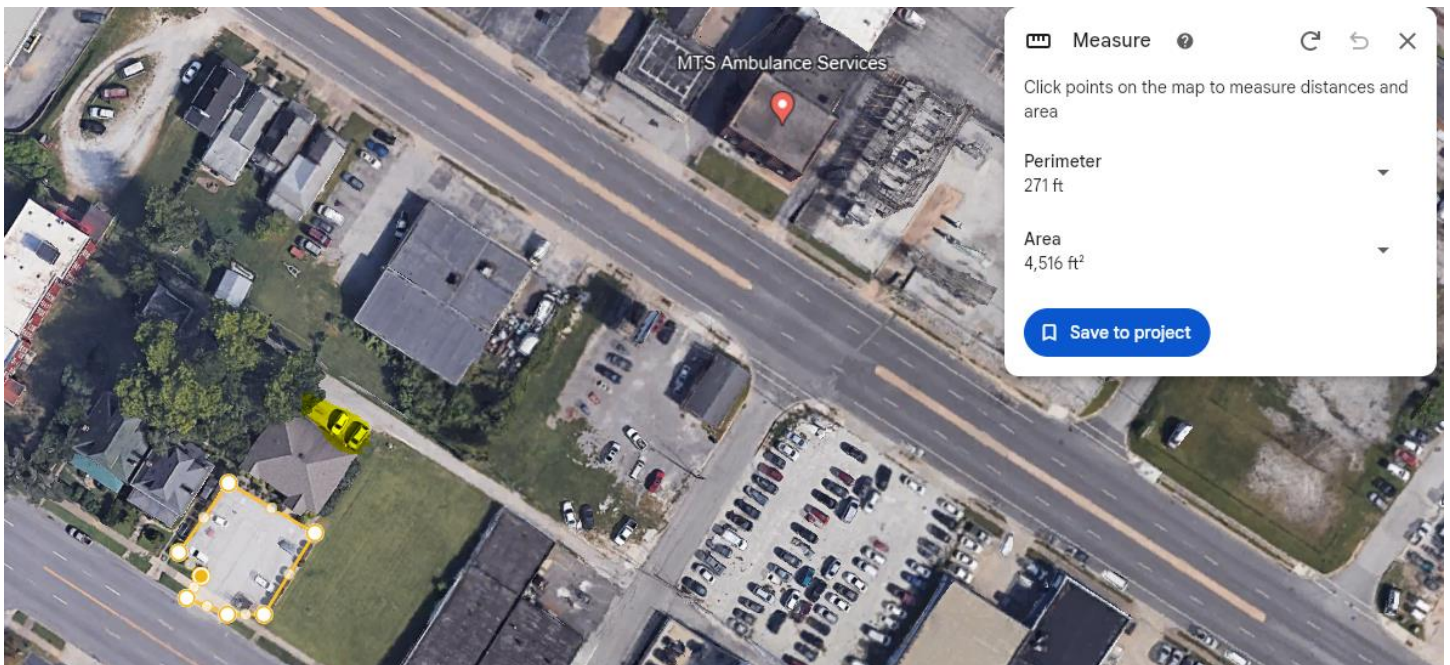


Zone 4 (Cont.)

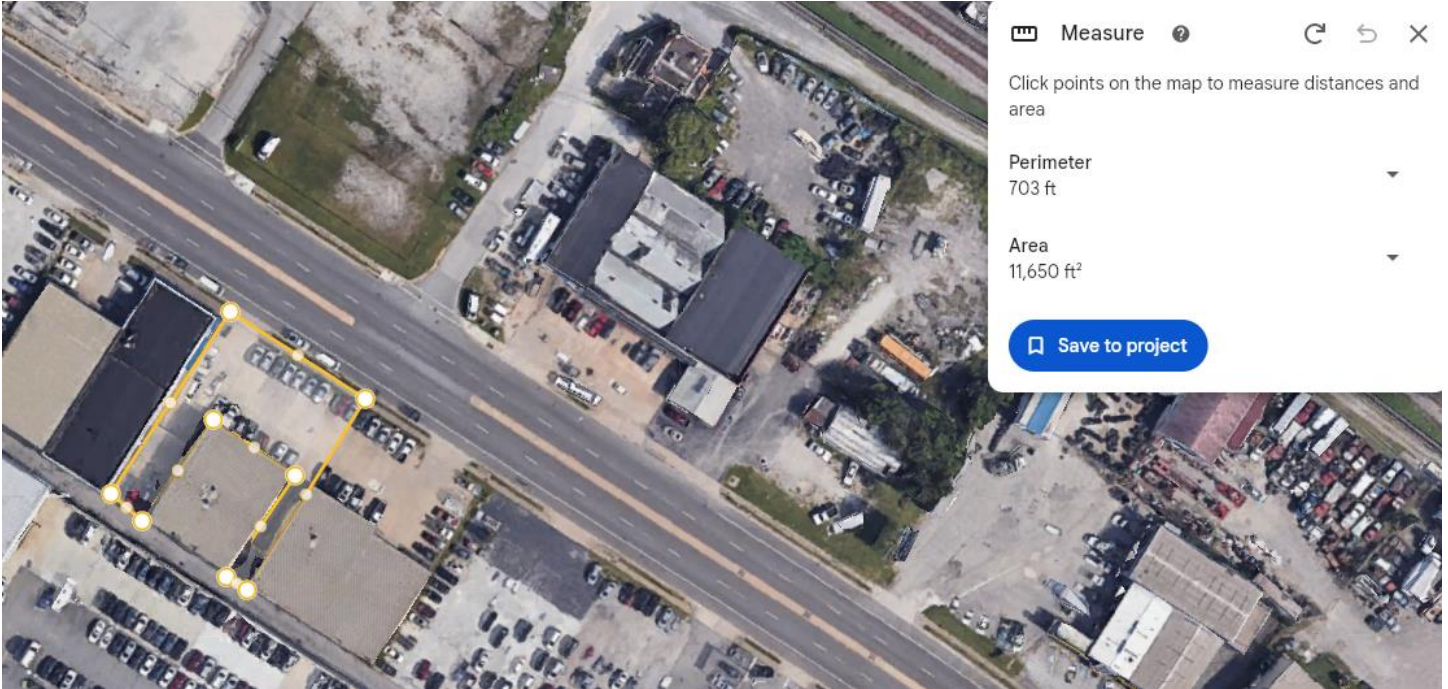
Women's Care (2001 Winchester Ave. Ashland, KY) Approx. Measurement: 16,764 sq. ft.



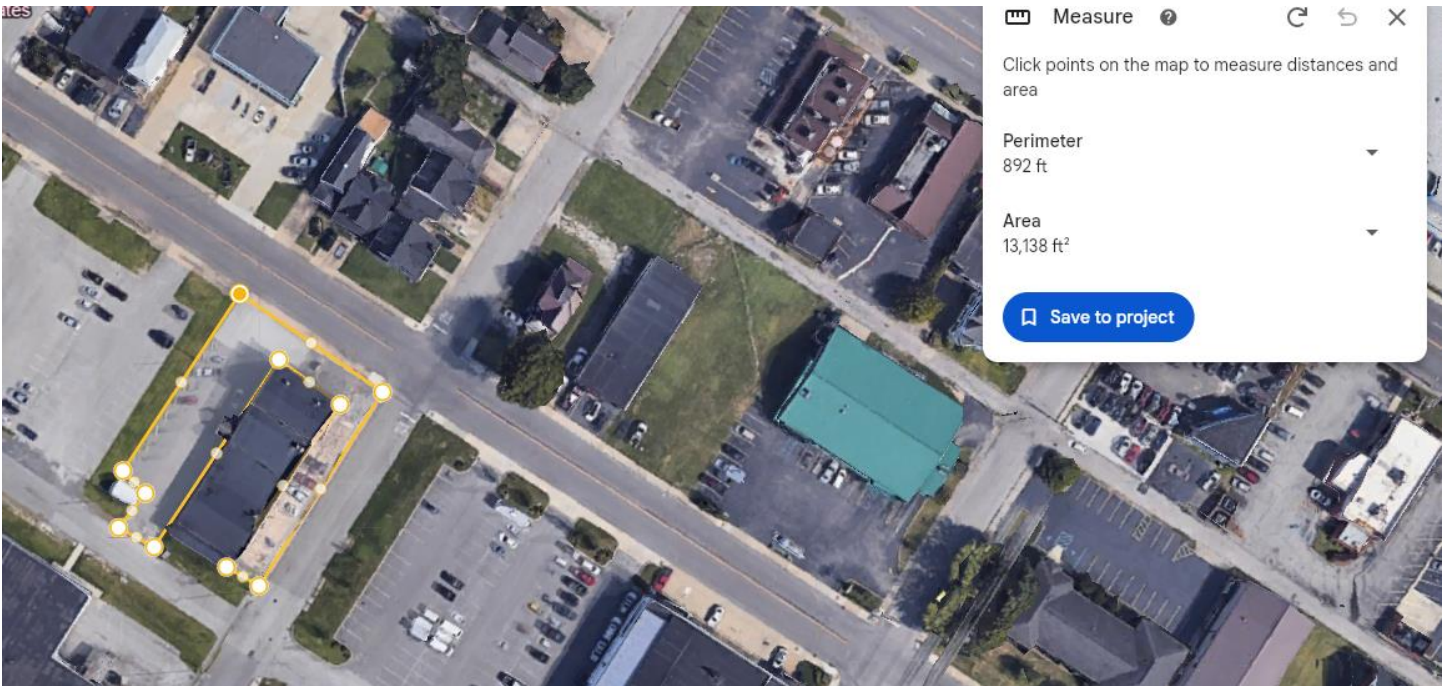
Ashland Coumadin Clinic (2421 Winchester Ave. Ashland, KY) Approx. Measurements: 4,516 sq. ft.



Specialty Pharmacy (2548 Greenup Ave. Ashland, KY) Approx. Measurement: 11,650 sq. ft.



Ashland Family Medicine (2340 Carter Avenue Ashland, KY) Approx. Measurement: 13,138 sq. ft.



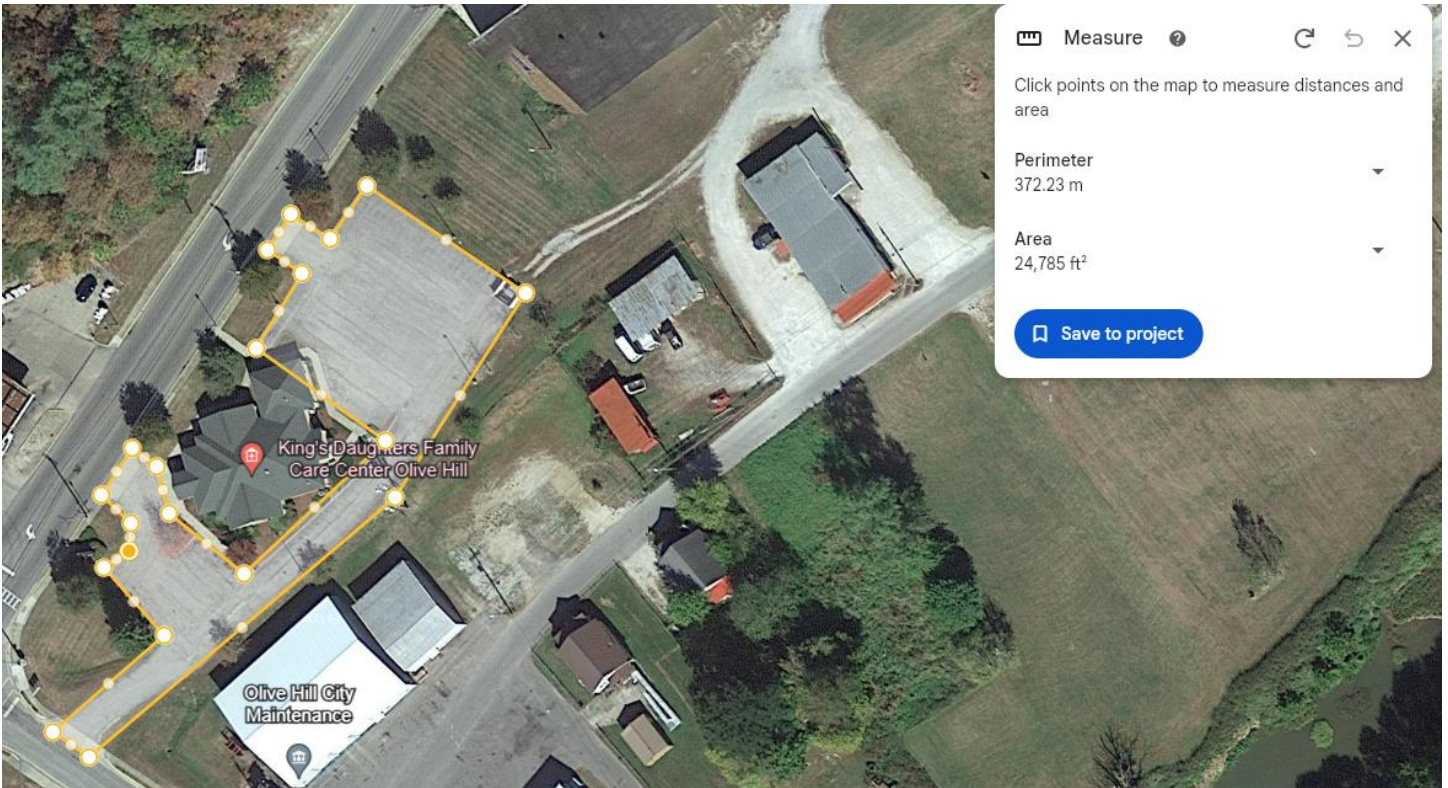
Zone 5

Louisa (2145 KY 2565 Louisa, KY) Approx. Measurements: 19,843 sq. ft.



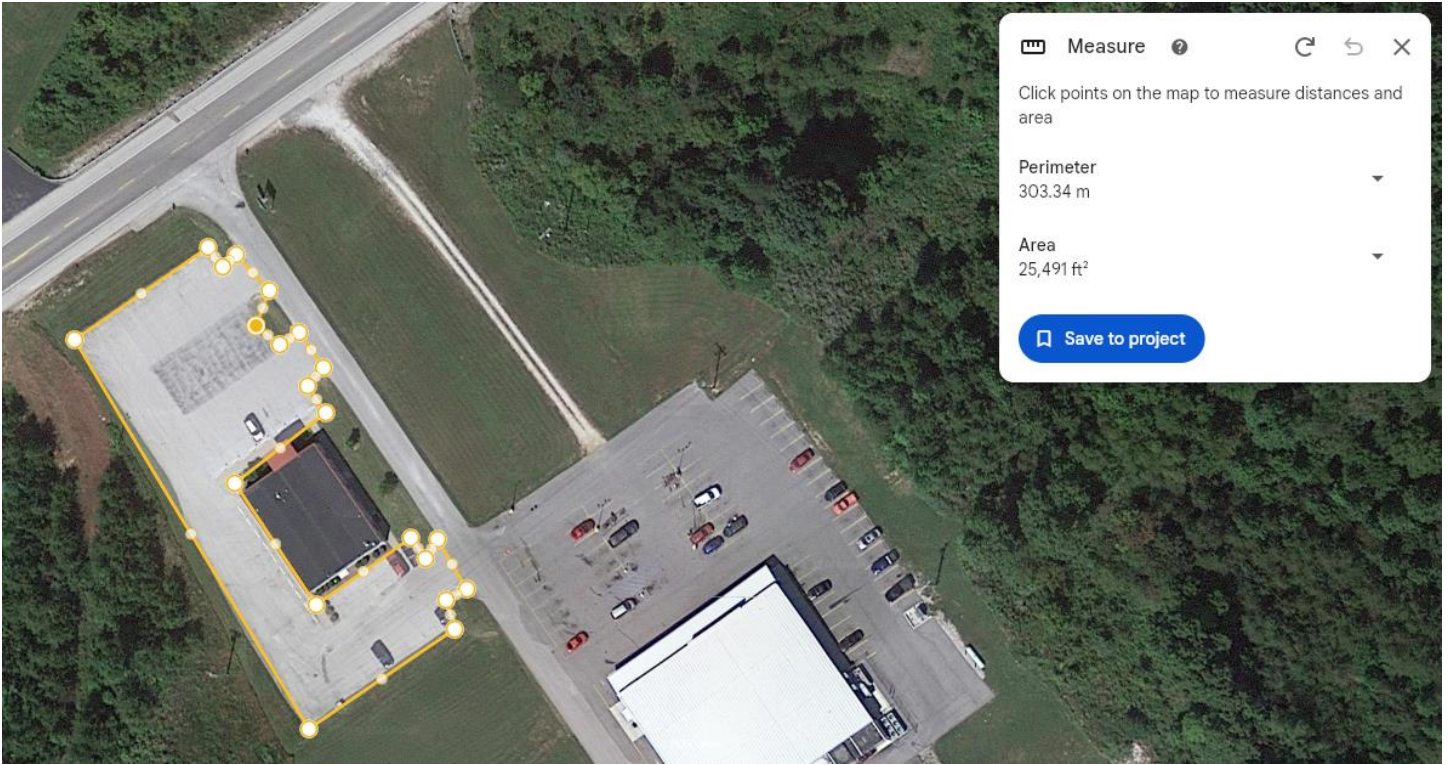
Zone 6

Olive Hill Family Care (391 W. Tom T. Hall Blvd. Olive Hill, KY) Approx. Measurement: 24,758 sq. ft.



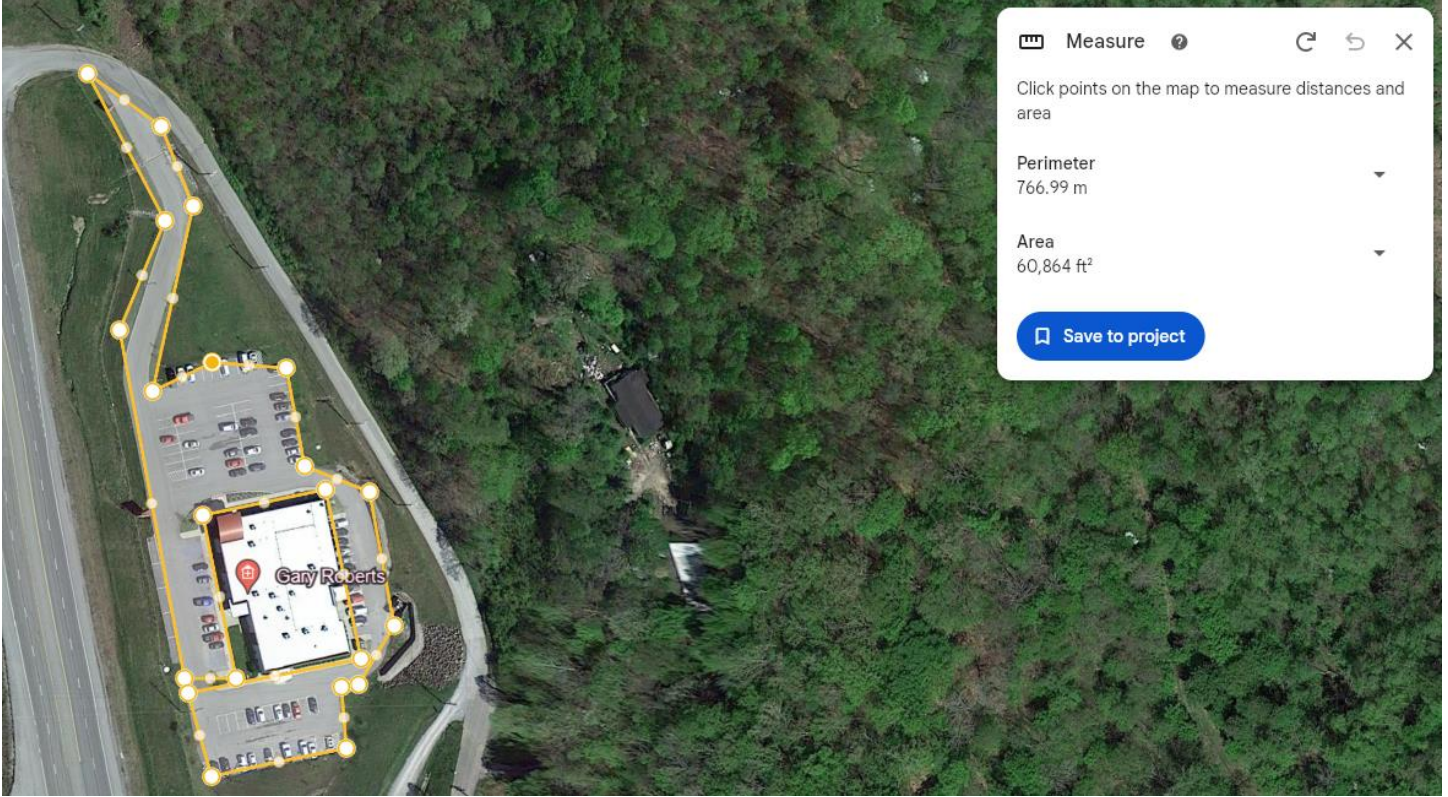
Zone 7

Sandy Hook Primary Care (1908 N. Ky Rt. 7 Sandy Hook, KY) Approx. Measurement: 25,491 sq. ft.



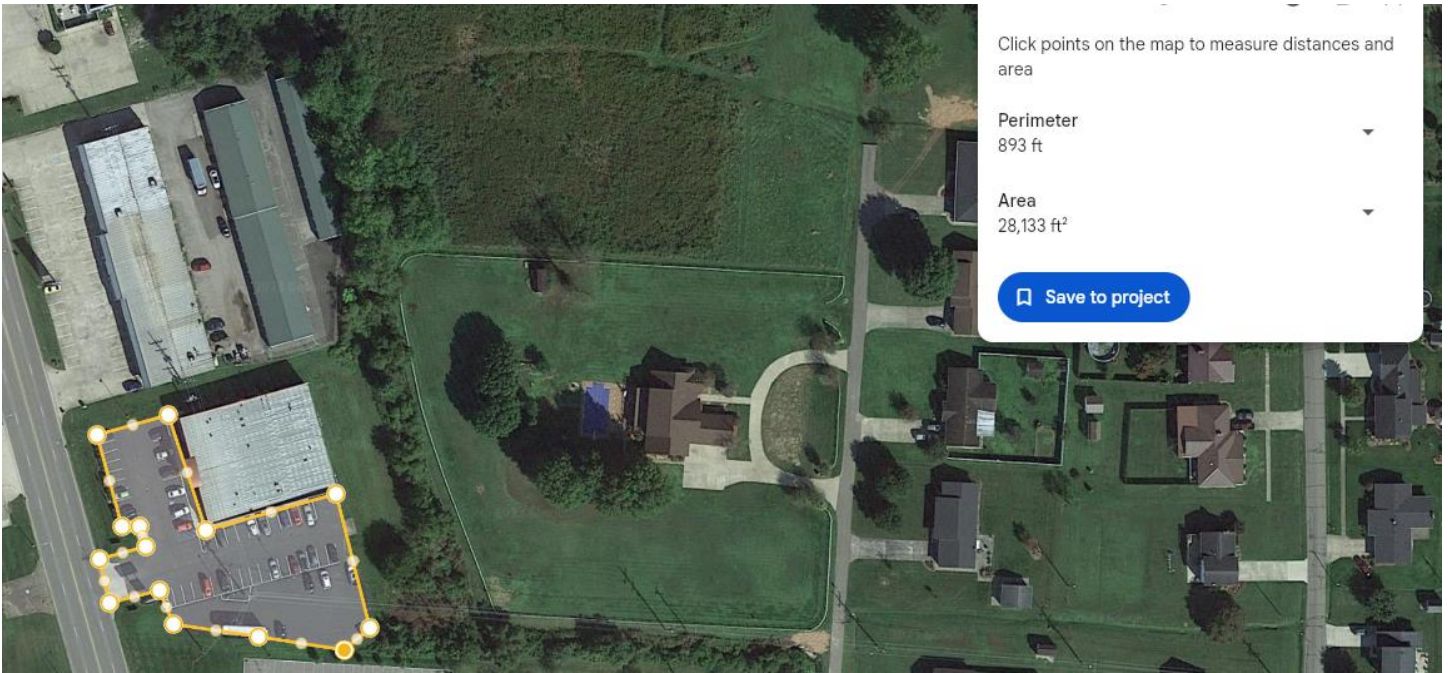
Zone 8

Prestonsburg Medical Specialties (1279 Old Abbott Mtn, Rd. Prestonsburg, KY) Approx. Measurement: 60,864 sq. ft

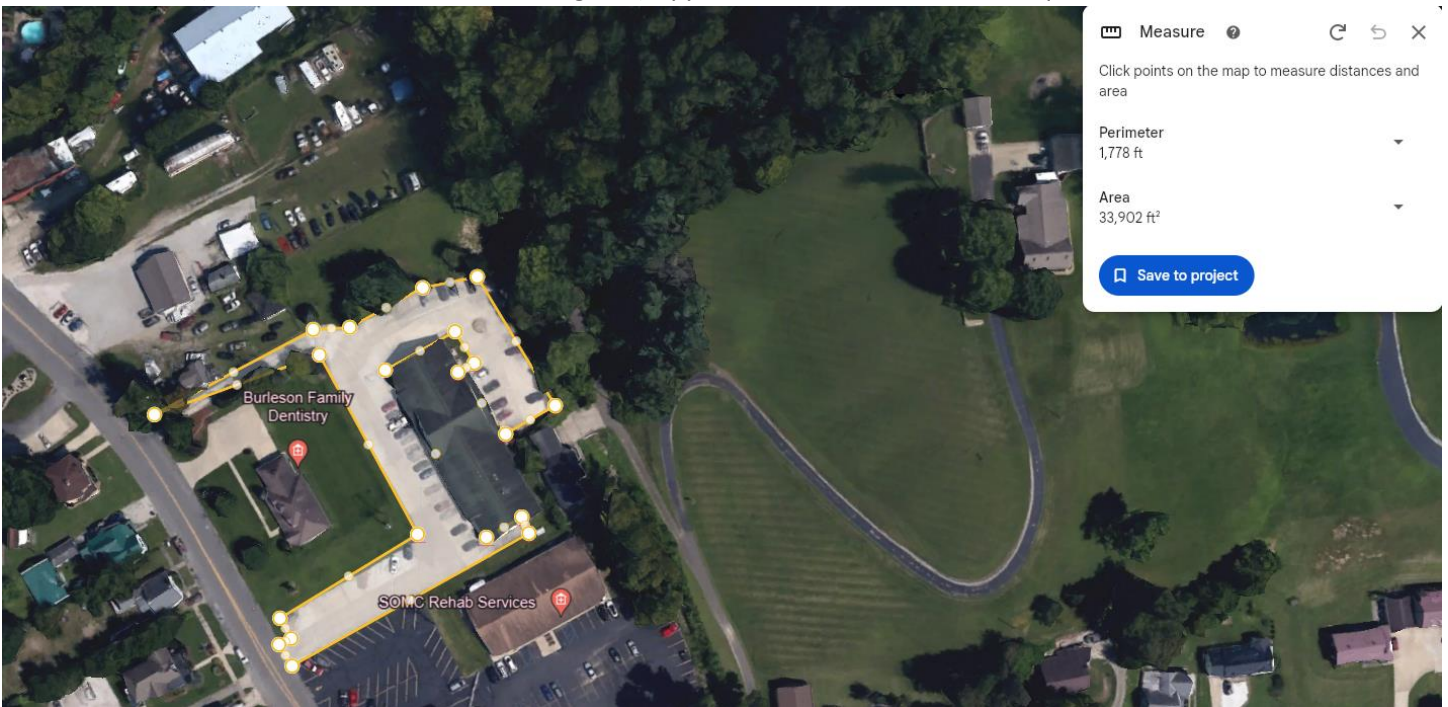


Zone 9

Wheelersburg Family Care (8750 Ohio River Road, Wheelersburg OH) Approx Measurements: 28,133 sq. ft

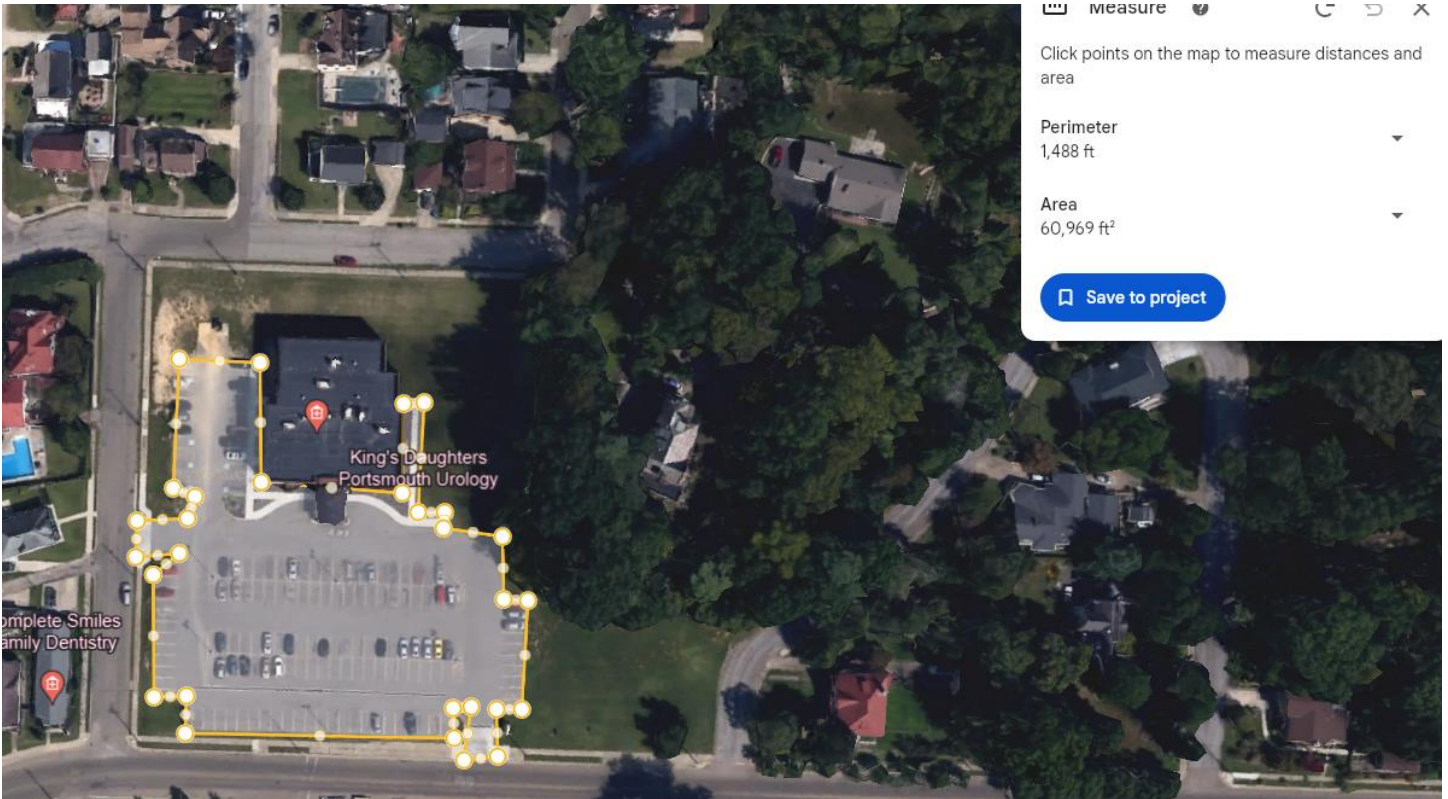


David Provaznik (11826 Gallia Pike Wheelersburg, OH) Approx. Measurement: 33,902 sq. ft.

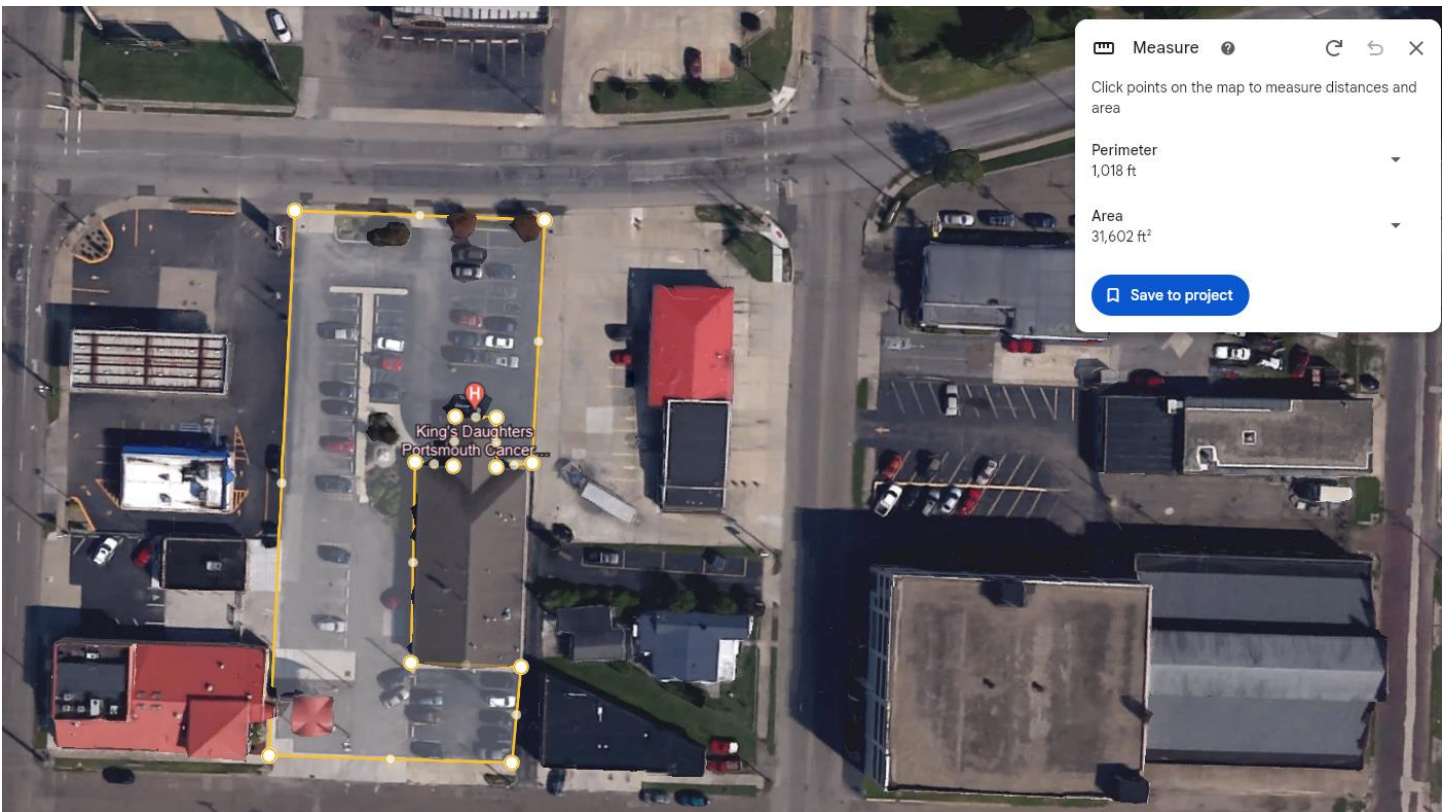


Zone 10

Kinney's Lane Medical Specialties (1729 Kinney's Lane Portsmouth, OH) Approx. Measurement: 60,969 sq. ft.

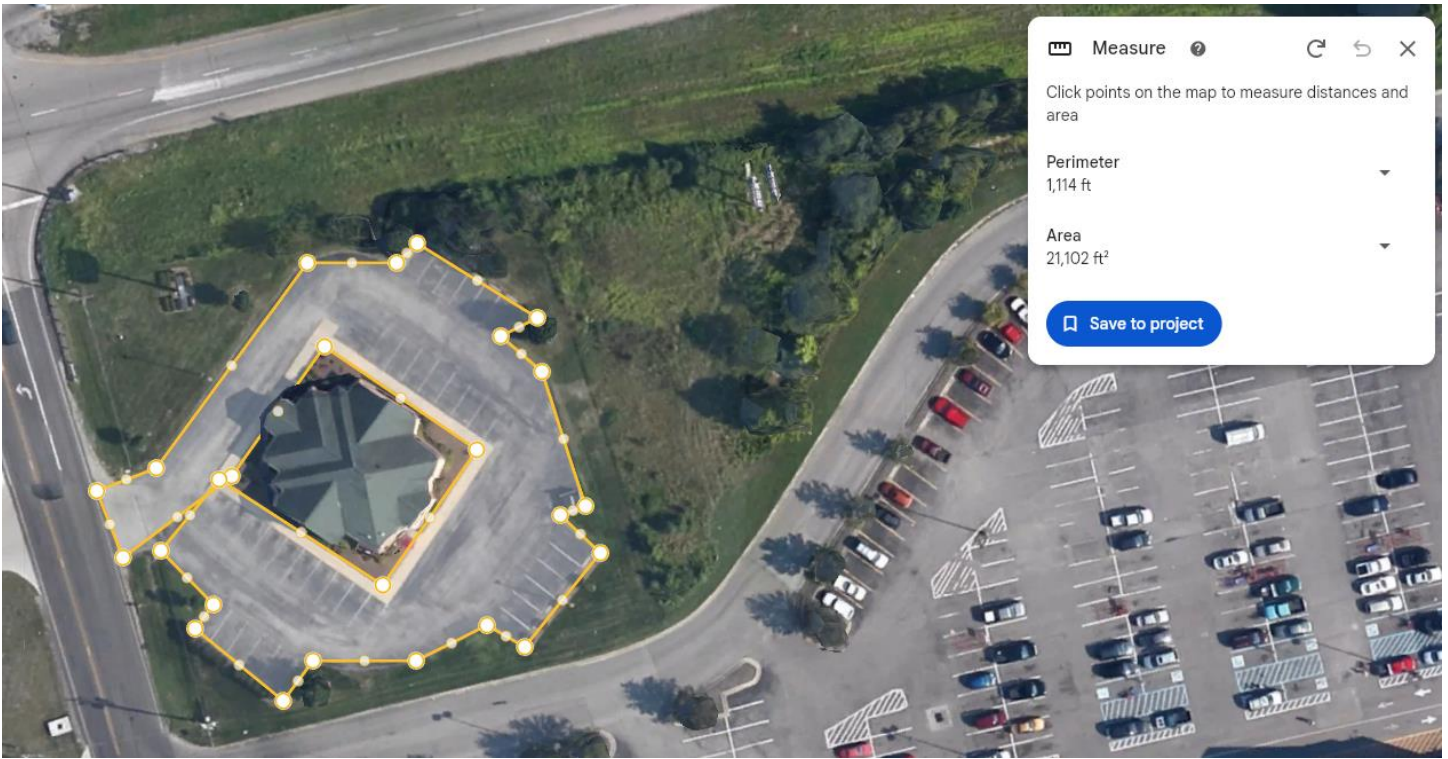


Dr. Inoshita (916 11th St Portsmouth, OH) Approx. Measurement: 31,602 sq. ft.

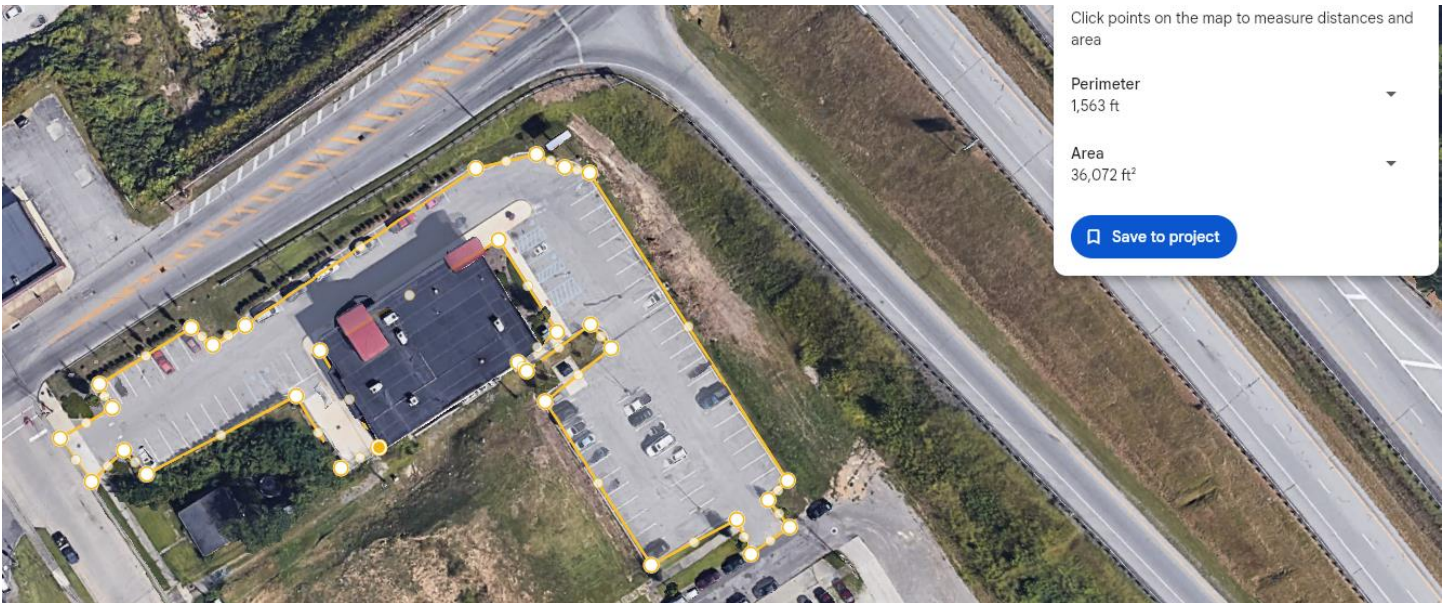


Zone 11

Burlington Urgent Care (384 County Road 120 South Point, OH) Approx. Measurement: 21,102 sq. ft.

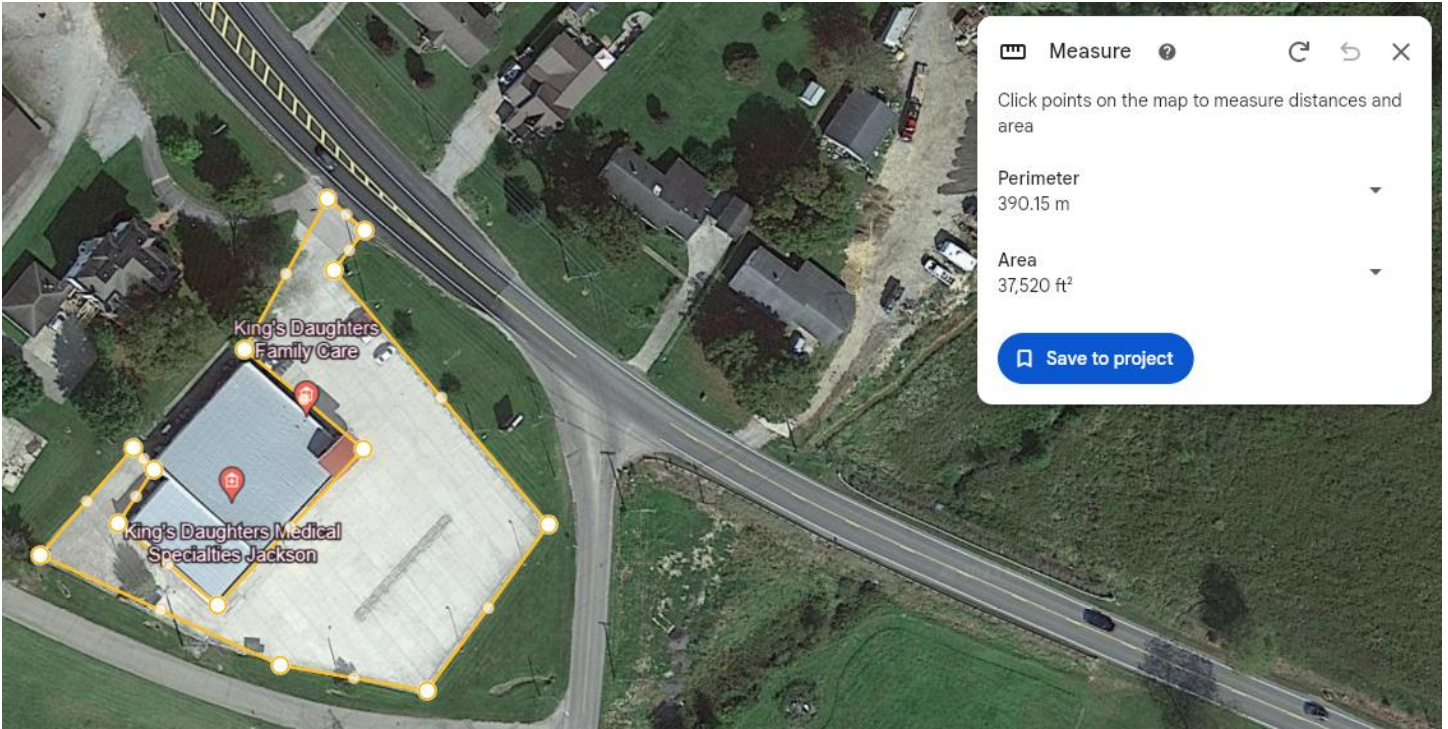


Ironton Family Care/Urgent Care (912 Park Avenue Ironton, OH) Approx. Measurement: 36,072 sq. ft.



Zone 12

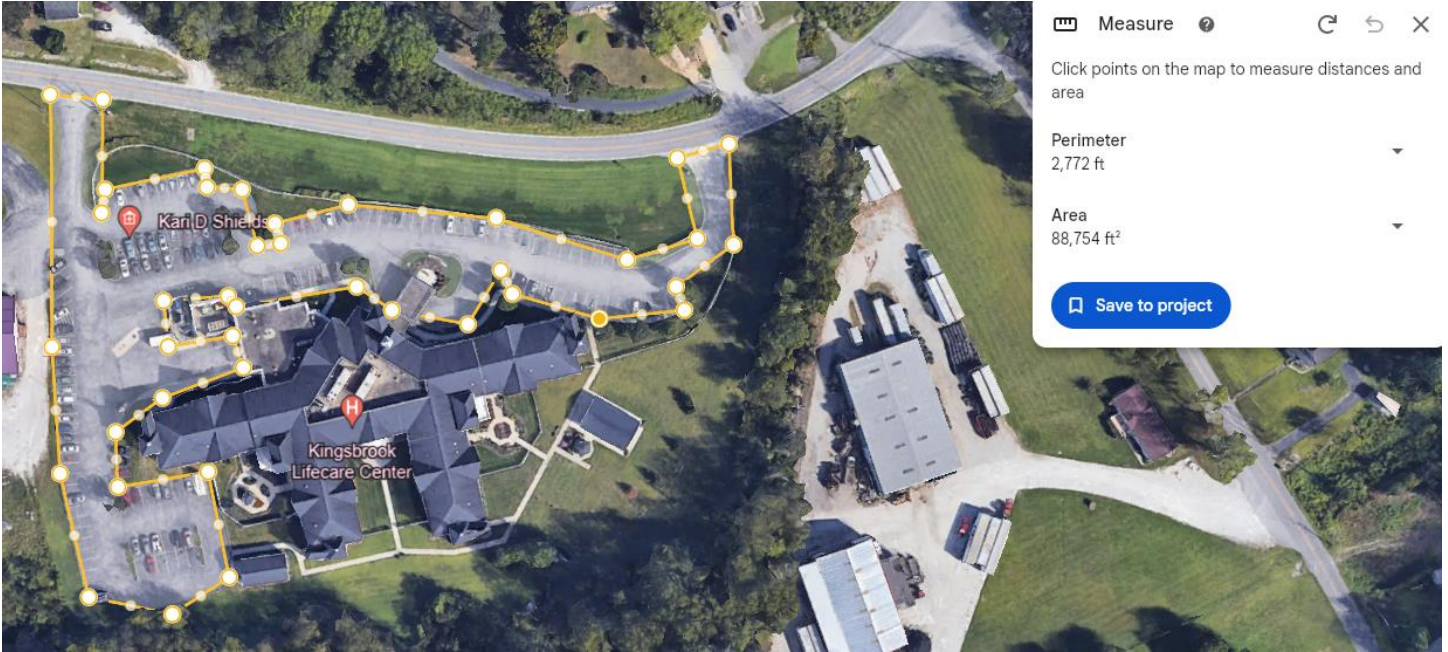
Jackson Primary Care (14395 State Route 93 Jackson, OH) Approx. Measurement: 37,520 sq. ft.



Zone 13

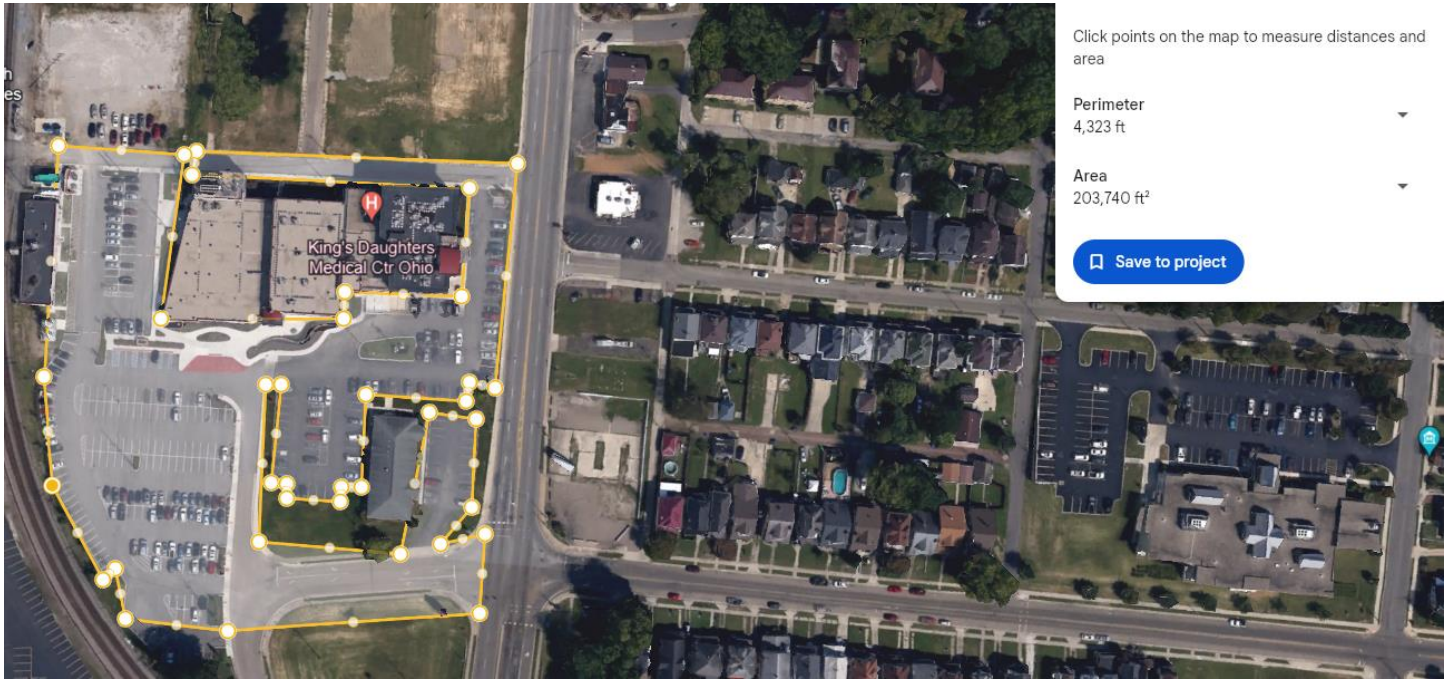
Kingsbrook Lifecare Center (2500 KY Rt 5 Ashland, KY 41102) Approx. Measurement: 88,754 sq. ft.

Include all sidewalks at facility



Zone 14

King's Daughters Medical Center Ohio (2001 Scioto Trail Portsmouth, OH) Approx. Measurement: 203,740 sq. ft



KDOH Drive-Thru next to KDOH campus not shown on Google Earth due to recent construction

