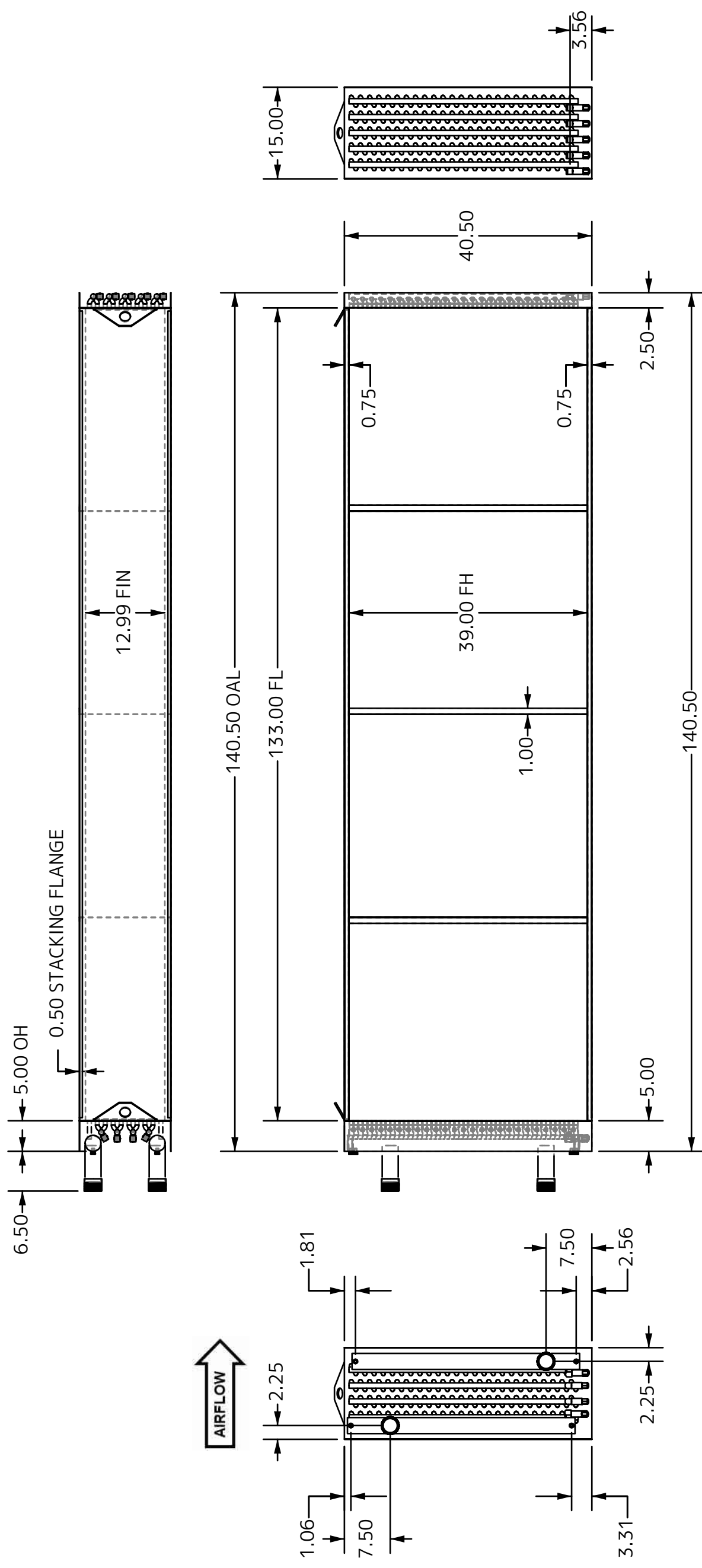


COILS INSTALLATION PACKAGE 1

HSRB	# Coils	Room #	Projected ship date	Projected Installation Schedule	Weight	Crate Dimensions	Note
HSRB AHU 1 (ERU coils)	4	501	6/22/2023	July 3 - July 7	3204	11x4x4	2 crates, 2 coils each crate
HSRB AHU 2 (ERU coils)	4	501	6/23/2023	July 10 - July 14	3204	11x4x4	2 crates, 2 coils each crate
HSRB AHU 3 (ERU coils)	4	003	6/24/2023	July 17 - July 21	3204	11x4x4	2 crates, 2 coils each crate
HSRB AHU 4 (ERU coils)	4	003	6/25/2023	July 24 - July 28	3204	11x4x4	2 crates, 2 coils each crate
HSRB AHU 5 (ERU coils)	2	003	6/29/2023	July 31 - Aug 4	3620	11x5x4	1 crate, 2 cpo;d
ERU 1A	2	501	6/29/2023	Aug 7 - Aug 11	2608	13x5x2	2 coils, 1 per crate
ERU 1B	2	501	6/29/2023	Aug 14 - Aug 18	2608	13x5x2	2 coils, 1 per crate
ERU 2A	2	501	7/12/2023	Aug 21 - Aug 25	2608	13x5x2	2coils, 1 per crate
ERU 2B	2	501	6/29/2023	Aug 28 - Sept 1	2608	13x5x2	2coils, 1 per crate
AHU D6	2	MB019	6/6/2023	June 19 - June 23	2574	10x8x2	2 crates, 1 coil per crate

DIE NUMBER	1
FACE TUBES	26
# CIRCUITS	25
PASS / CIRCUIT	10
TUBE MATERIAL	
0.625 x 0.035	
Copper SMOOTH	
FIN MATERIAL	
10 FINS PER INCH	
0.0095 Aluminum	
Corr	
CASING MATERIAL	
16 GAUGE	
304 S.S.	
HEADER MATERIAL	
TYPE L Copper	
HEADER SIZES	
SUPPLY: 2.5" NOM	
RETURN: 2.5" NOM	
CONNECTIONS	
SUPPLY: 2.5" NOM	
TYPE L Copper	
RETURN: 2.5" NOM	
TYPE L Copper	
DRY WEIGHT	
1595 Lbs./Coil	
INTERNAL VOLUME	
5.75 GAL PER COIL	
TEST PRESSURE	
200 PSIG	
CASING STYLE	
STANDARD	
COIL QTY	2
FEATURES:	
Lifting Bracket (2)	
Stacking Flange	
MPT Conn. Red Brass (2)	
Vent and Drain (4)	

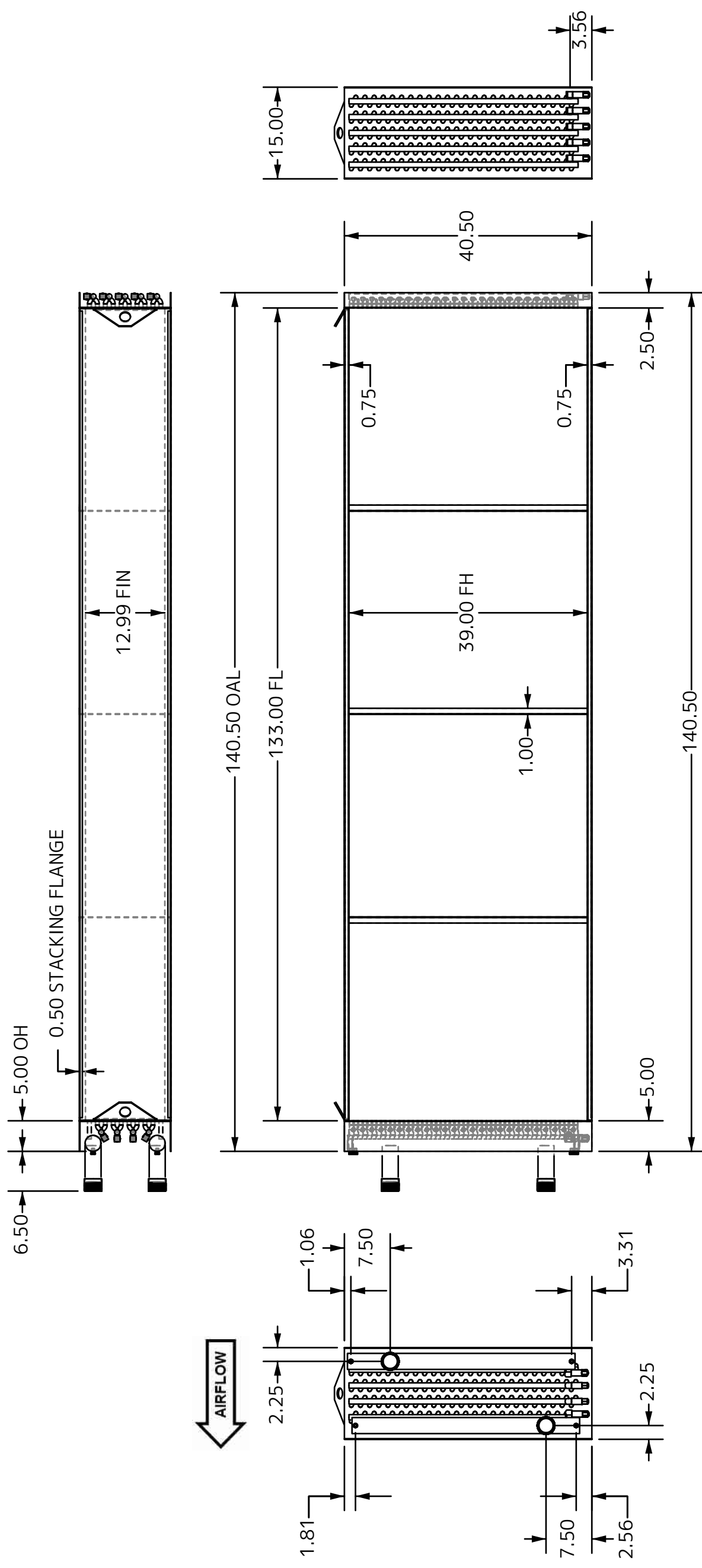


COIL DESCRIPTION	FLUID 39x133 - 10R - 0.625/120
DATE	03/10/2023
CUSTOMER	HSRB - 1A, 1B & 2B (RH)
CUST. P/N	
REV	R0

COIL I.D. V10008417

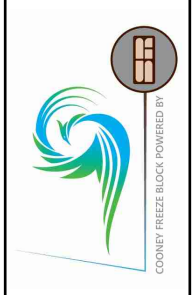
NOTES:
 COPYRIGHT © SUPER RADIATOR COILS
 THIS DRAWING IS THE EXCLUSIVE PROPERTY
 OF SUPER RADIATOR COILS.
 DUPLICATION OR COPYING OF THIS DRAWING
 BY OTHERS FOR ANY REASON,
 UNLESS EXPRESSLY APPROVED IN WRITING BY
 SUPER RADIATOR COILS, IS
 PROHIBITED BY LAW. VIOLATORS WILL BE
 PROSECUTED.

DIE NUMBER	1
FACE TUBES	26
# CIRCUITS	25
PASS / CIRCUIT	10
TUBE MATERIAL	
0.625 x 0.035	
Copper SMOOTH	
FIN MATERIAL	
10 FINS PER INCH	
0.0095 Aluminum	
Corr	
CASING MATERIAL	
12 GAUGE	
304 S.S.	
HEADER MATERIAL	
TYPE L Copper	
HEADER SIZES	
SUPPLY: 2.5" NOM	
RETURN: 2.5" NOM	
CONNECTIONS	
SUPPLY: 2.5" NOM	
TYPE L Copper	
RETURN: 2.5" NOM	
TYPE L Copper	
DRY WEIGHT	
1739 Lbs./Coil	
INTERNAL VOLUME	
5.75 GAL PER COIL	
TEST PRESSURE	
200 PSIG	
CASING STYLE	
STANDARD	
COIL QTY	2
FEATURES:	
Lifting Bracket (2)	
Stacking Flange	
MPT Conn. Red Brass (2)	
Vent and Drain (4)	

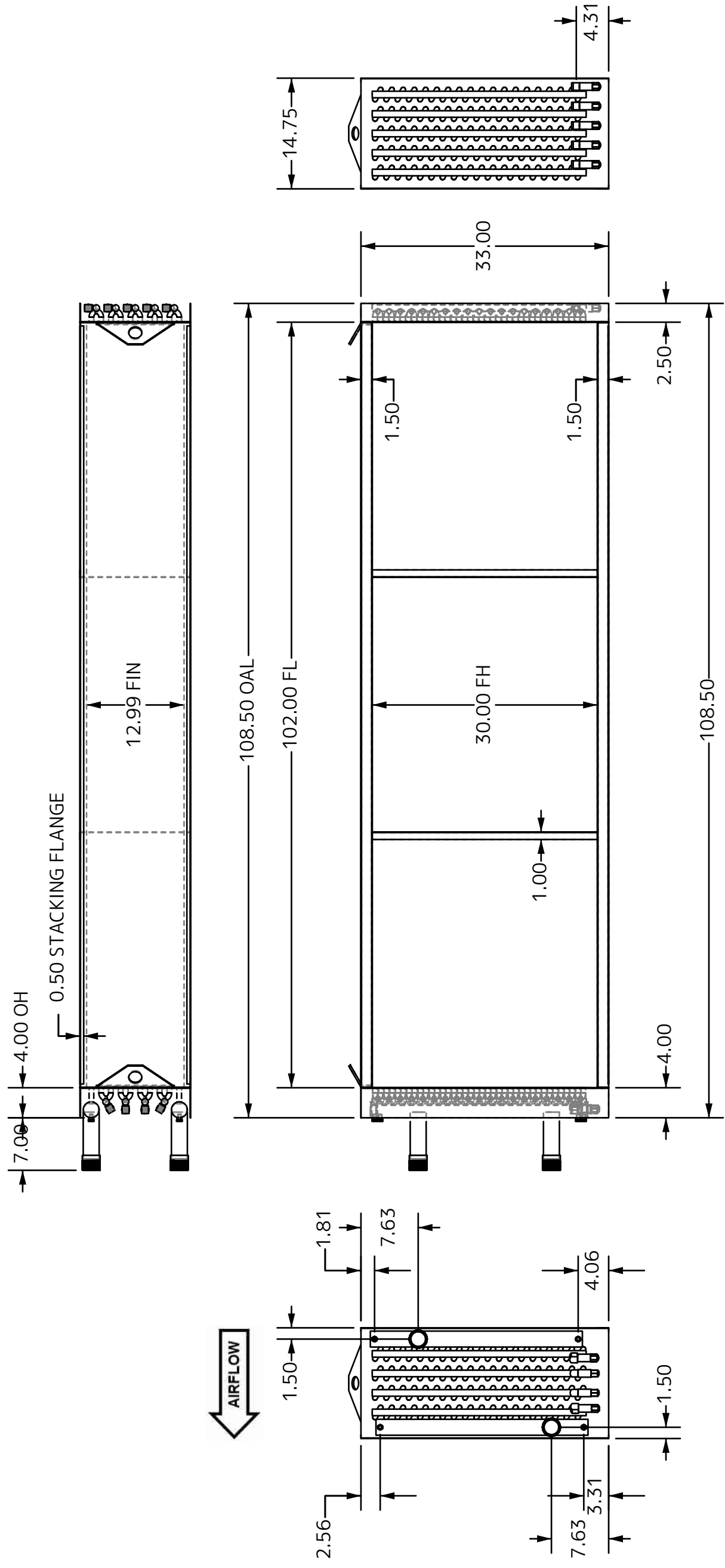


COIL DESCRIPTION	FLUID 39x133 - 10R - 0.625/120	
DATE	03/10/2023	CUST. P/N
CUSTOMER	HSRB - ERU-2A	
COIL I.D.	V10008394	
REV	R0	

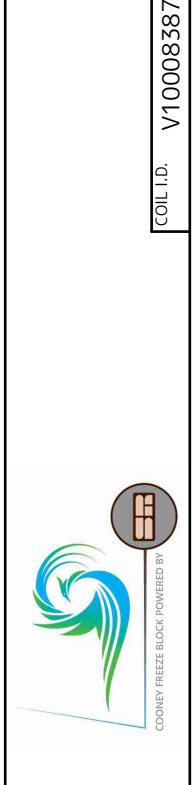
NOTES:
 COPYRIGHT © SUPER RADIATOR COILS
 THIS DRAWING IS THE EXCLUSIVE PROPERTY
 OF SUPER RADIATOR COILS.
 DUPLICATION OR COPYING OF THIS DRAWING
 BY OTHERS FOR ANY REASON,
 UNLESS EXPRESSLY APPROVED IN WRITING BY
 SUPER RADIATOR COILS, IS
 PROHIBITED BY LAW. VIOLATORS WILL BE
 PROSECUTED.



DIE NUMBER	1
FACE TUBES	20
# CIRCUITS	19
PASS / CIRCUIT	11
TUBE MATERIAL	
0.625 x 0.035 Copper SMOOTH	
FIN MATERIAL	
10 FINS PER INCH 0.0095 Aluminum Corr	
CASING MATERIAL	
14 GAUGE 304 S.S.	
HEADER MATERIAL	
TYPE L Copper	
HEADER SIZES	
SUPPLY: 2" NOM RETURN: 2" NOM	
CONNECTIONS	
SUPPLY: 2" NOM TYPE L Copper	
RETURN: 2" NOM TYPE L Copper	
DRY WEIGHT	
1068 Lbs./Coil	
INTERNAL VOLUME	
3.39 GAL PER COIL	
TEST PRESSURE	
200 PSIG	
CASING STYLE	
STANDARD	
COIL QTY	2
FEATURES: Lifting Bracket (2) Stacking Flange MPT Conn. Red Brass (2) Vent and Drain (4)	

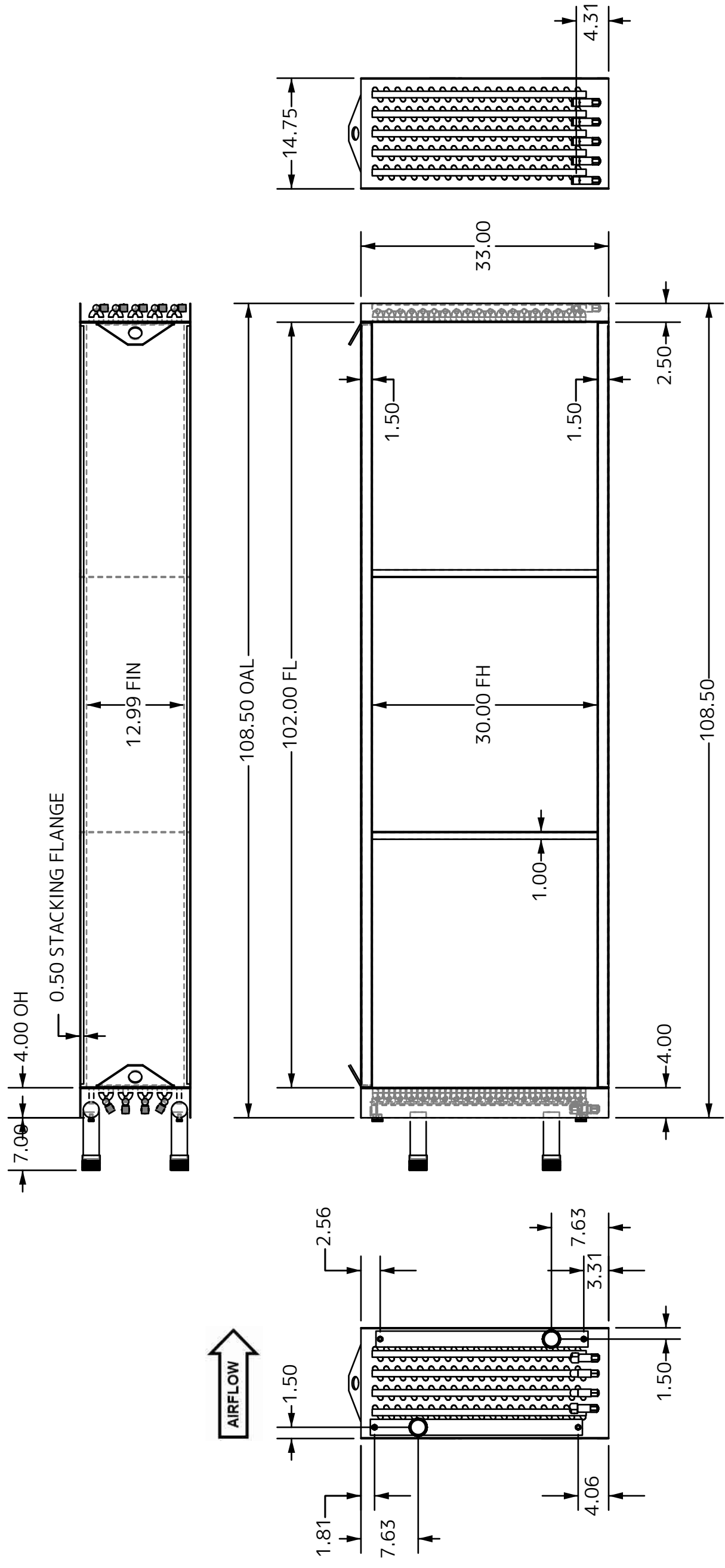


COIL DESCRIPTION	FLUID 30x102 - 10R - 0.625/120		
DATE	03/10/2023	CUST. P/N	HSRB AHU-1,2,3,4 CC
CUSTOMER			
COIL I.D.	V10008387	REV	R0



NOTES:
 COPYRIGHT © SUPER RADIATOR COILS
 THIS DRAWING IS THE EXCLUSIVE PROPERTY
 OF SUPER RADIATOR COILS.
 DUPLICATION OR COPYING OF THIS DRAWING
 BY OTHERS FOR ANY REASON,
 UNLESS EXPRESSLY APPROVED IN WRITING BY
 SUPER RADIATOR COILS, IS
 PROHIBITED BY LAW. VIOLATORS WILL BE
 PROSECUTED.

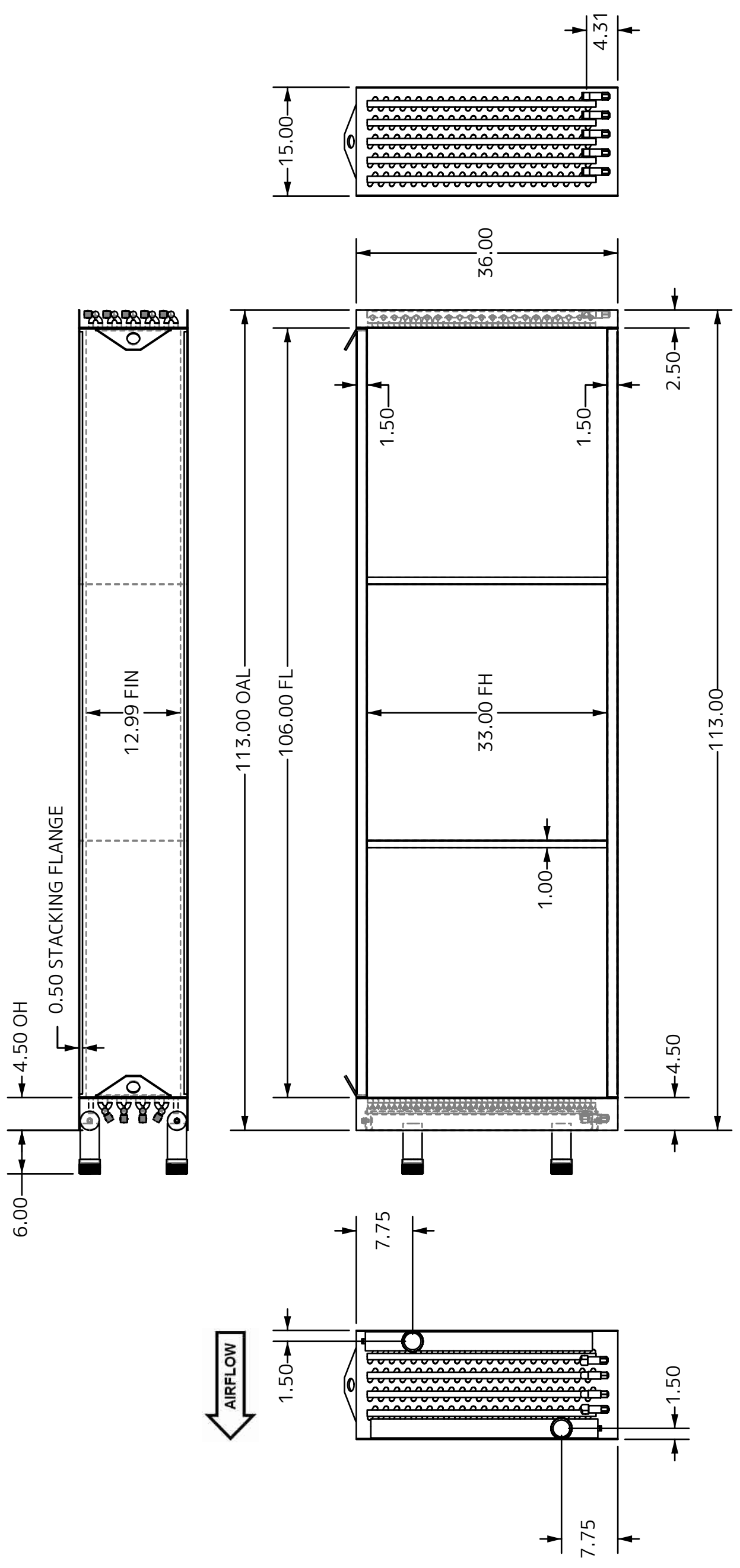
DIE NUMBER	1
FACE TUBES	20
# CIRCUITS	19
PASS / CIRCUIT	11
TUBE MATERIAL	
0.625 x 0.035	
Copper SMOOTH	
FIN MATERIAL	
10 FINS PER INCH	
0.0095 Aluminum	
Corr	
CASING MATERIAL	
12 GAUGE	
304 S.S.	
HEADER MATERIAL	
TYPE L Copper	
HEADER SIZES	
SUPPLY: 2" NOM	
RETURN: 2" NOM	
CONNECTIONS	
SUPPLY: 2" NOM	
TYPE L Copper	
RETURN: 2" NOM	
TYPE L Copper	
DRY WEIGHT	
1068 Lbs./Coil	
INTERNAL VOLUME	
3.39 GAL PER COIL	
TEST PRESSURE	
200 PSIG	
CASING STYLE	
STANDARD	
COIL QTY	2
FEATURES:	
Lifting Bracket (2)	
Stacking Flange	
MPT Conn. Red Brass (2)	
Vent and Drain (4)	



COIL DESCRIPTION		FLUID 30x102 - 10R - 0.625/120	
DATE	CUST. P/N	DATE	CUSTOMER
03/10/2023	HSRB - AHU-1,2,3,4 (RH)		
COIL I.D.		V10008388	
NOTES:		COPYRIGHT © SUPER RADIATOR COILS THIS DRAWING IS THE EXCLUSIVE PROPERTY OF SUPER RADIATOR COILS. DUPLICATION OR COPYING OF THIS DRAWING BY OTHERS FOR ANY REASON, UNLESS EXPRESSLY APPROVED IN WRITING BY SUPER RADIATOR COILS, IS PROHIBITED BY LAW. VIOLATORS WILL BE PROSECUTED.	
REV		R0	

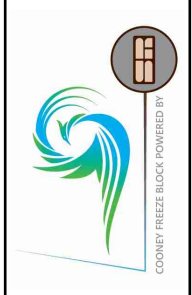


DIE NUMBER	1
FACE TUBES	22
# CIRCUITS	21
PASS / CIRCUIT	10
TUBE MATERIAL	
0.625 x 0.035 Copper SMOOTH	
FIN MATERIAL	
10 FINS PER INCH 0.0095 Aluminum Corr	
CASING MATERIAL	
12 GAUGE 304 S.S.	
HEADER MATERIAL	
TYPE L Copper	
HEADER SIZES	
SUPPLY: 2.5" NOM RETURN: 2.5" NOM	
CONNECTIONS	
SUPPLY: 2.5" NOM TYPE L Copper	
RETURN: 2.5" NOM TYPE L Copper	
DRY WEIGHT	
1206 Lbs./Coil	
INTERNAL VOLUME	
3.93 GAL PER COIL	
TEST PRESSURE	
200 PSIG	
CASING STYLE	
STANDARD	
COIL QTY	2
FEATURES: Lifting Bracket (2) Stacking Flange MPT Conn. Red Brass (2) Vent and Drain (4)	



COIL DESCRIPTION	FLUID 33x106 - 10R - 0.625/120	
DATE	03/10/2023	CUST. P/N
CUSTOMER	HSRB BASEMENT AHU-5	
COIL I.D.	V10008386	
REV	R0	

NOTES:
 COPYRIGHT © SUPER RADIATOR COILS
 THIS DRAWING IS THE EXCLUSIVE PROPERTY
 OF SUPER RADIATOR COILS.
 DUPLICATION OR COPYING OF THIS DRAWING
 BY OTHERS FOR ANY REASON,
 UNLESS EXPRESSLY APPROVED IN WRITING BY
 SUPER RADIATOR COILS, IS
 PROHIBITED BY LAW. VIOLATORS WILL BE
 PROSECUTED.



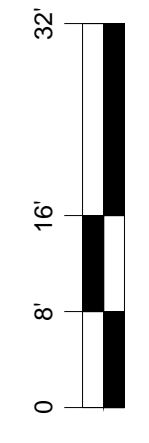
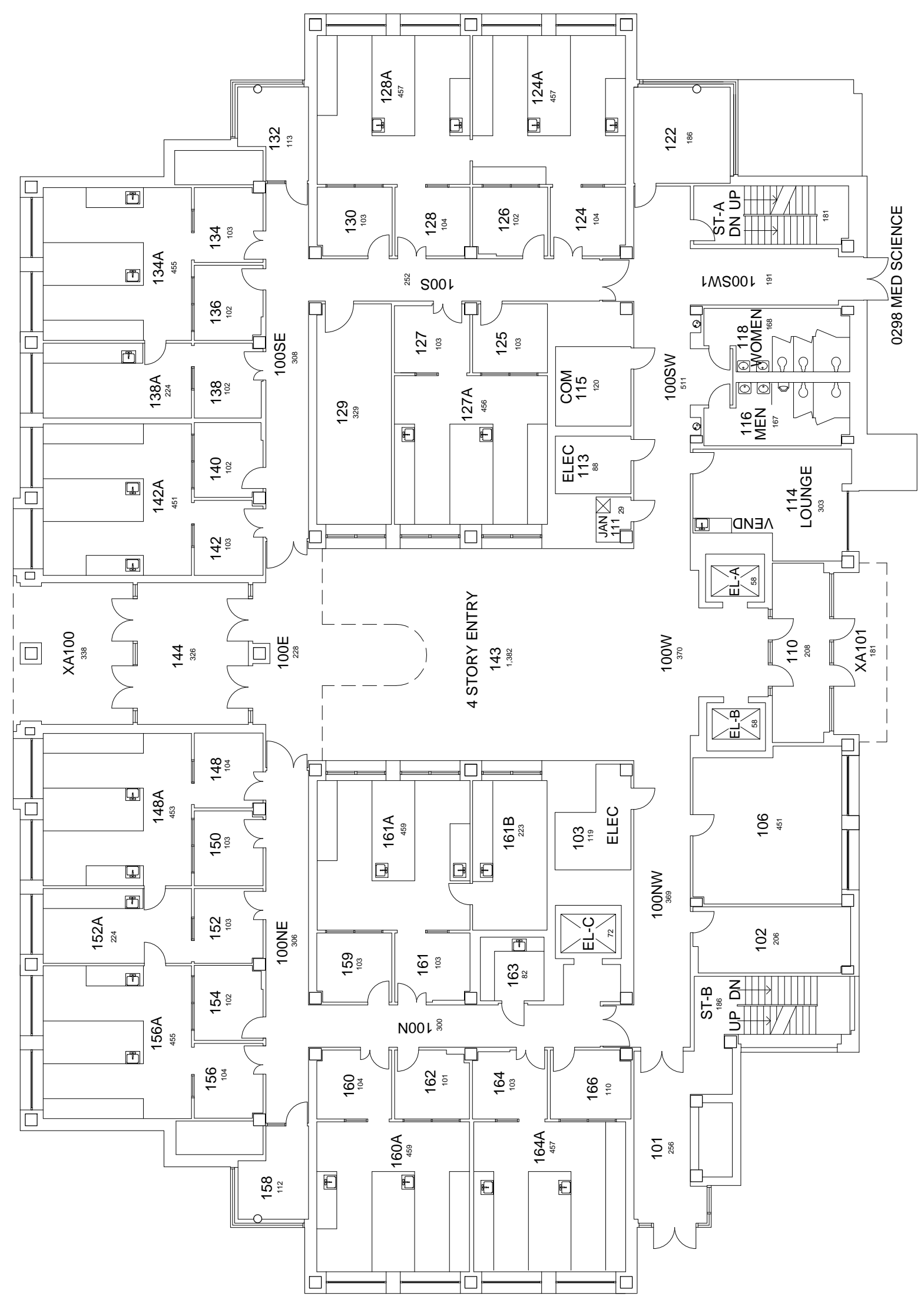
DATE: 08-13-12
DRAWN BY: RO

BLDG #: 0305

PETER P. BOSOMWORTH HEALTH SCIENCES RESEARCH BUILDING
KEY DRAWING

UNIVERSITY OF KENTUCKY
Physical Plant Division

SHEET
2 of 7



FIRST FLOOR PLAN
PETER P. BOSOMWORTH
HEALTH SCIENCES RESEARCH BUILDING

19,167 Gross Square Ft.

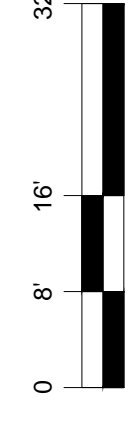
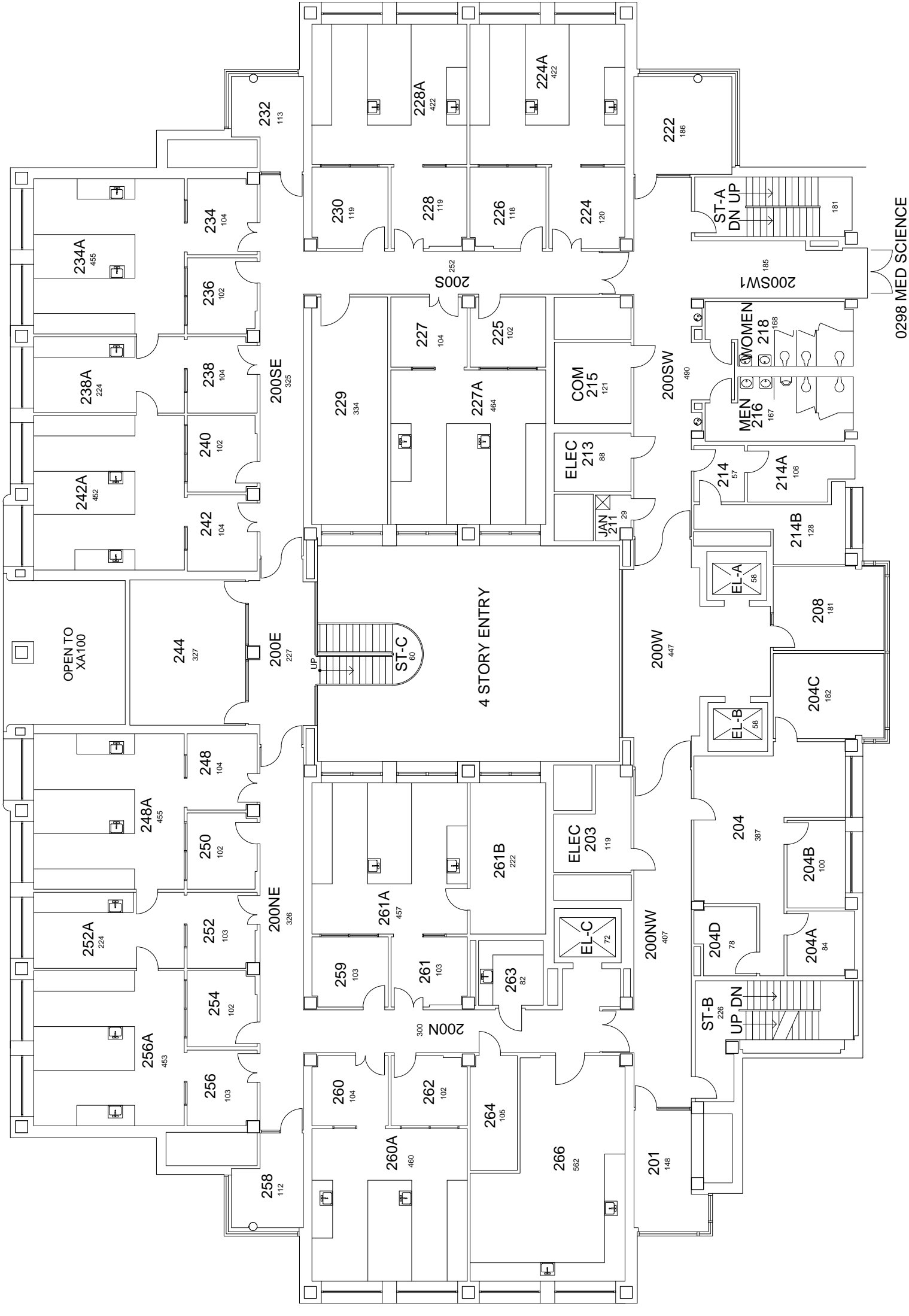
DATE: 08-13-12
DRAWN BY: RO

BLDG #: 0305

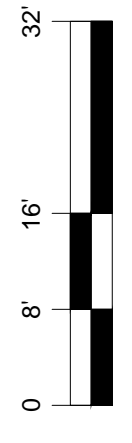
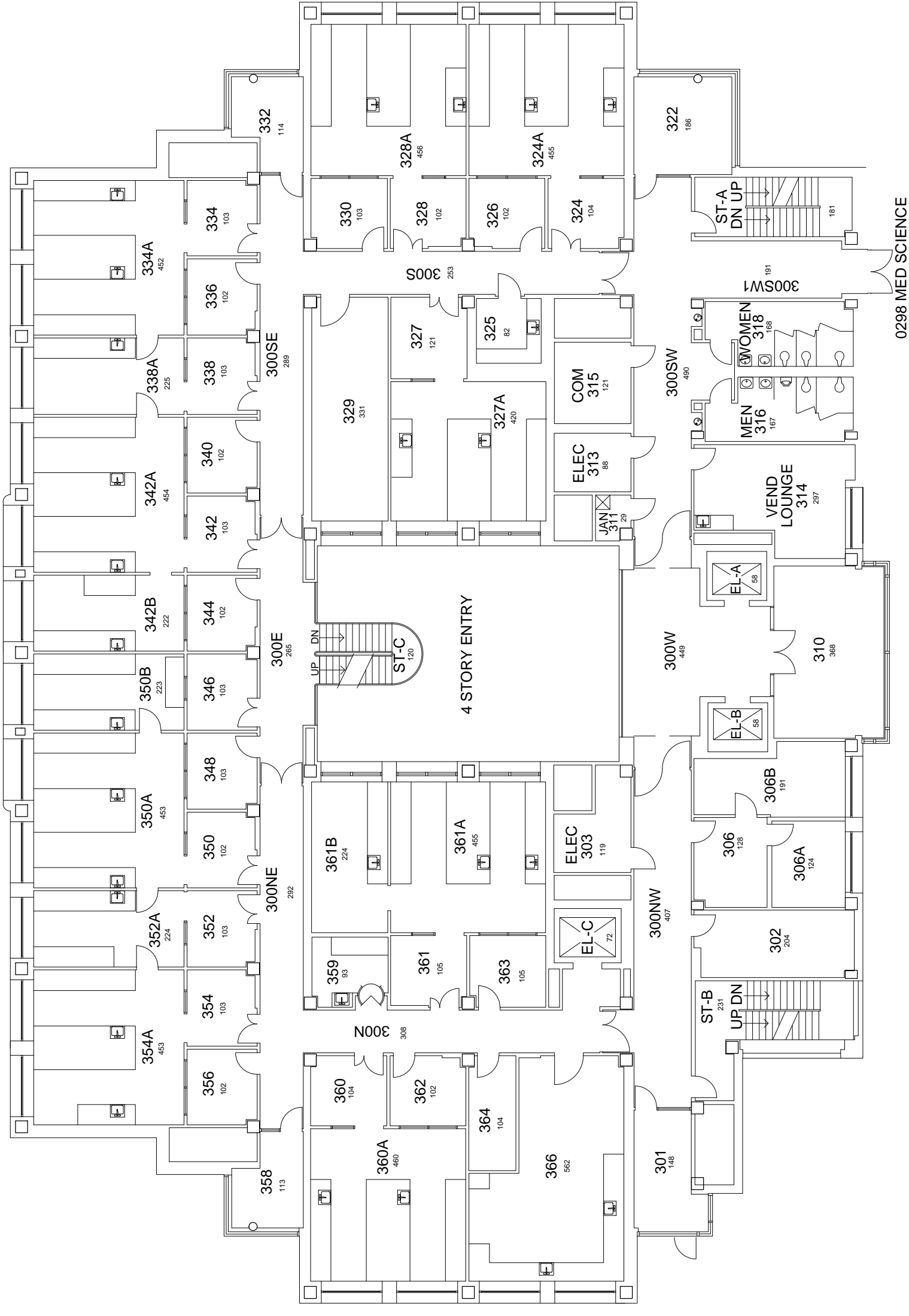
PETER P. BOSOMWORTH HEALTH SCIENCES RESEARCH BUILDING
KEY DRAWING

UNIVERSITY OF KENTUCKY
Physical Plant Division

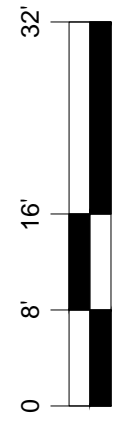
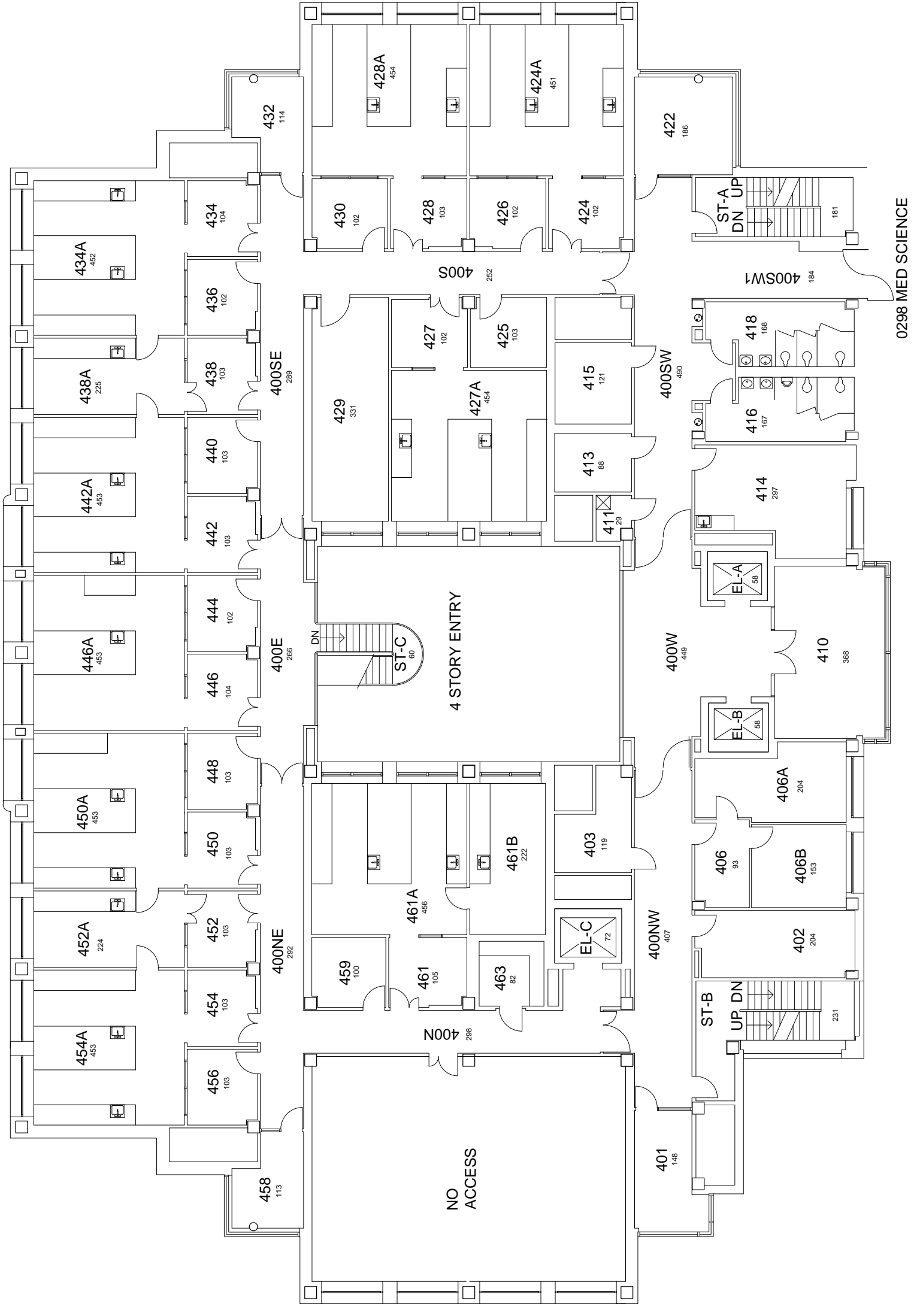
SHEET
3 of 7



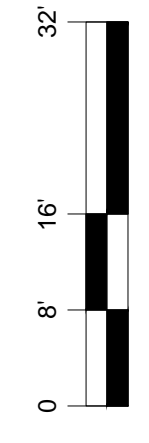
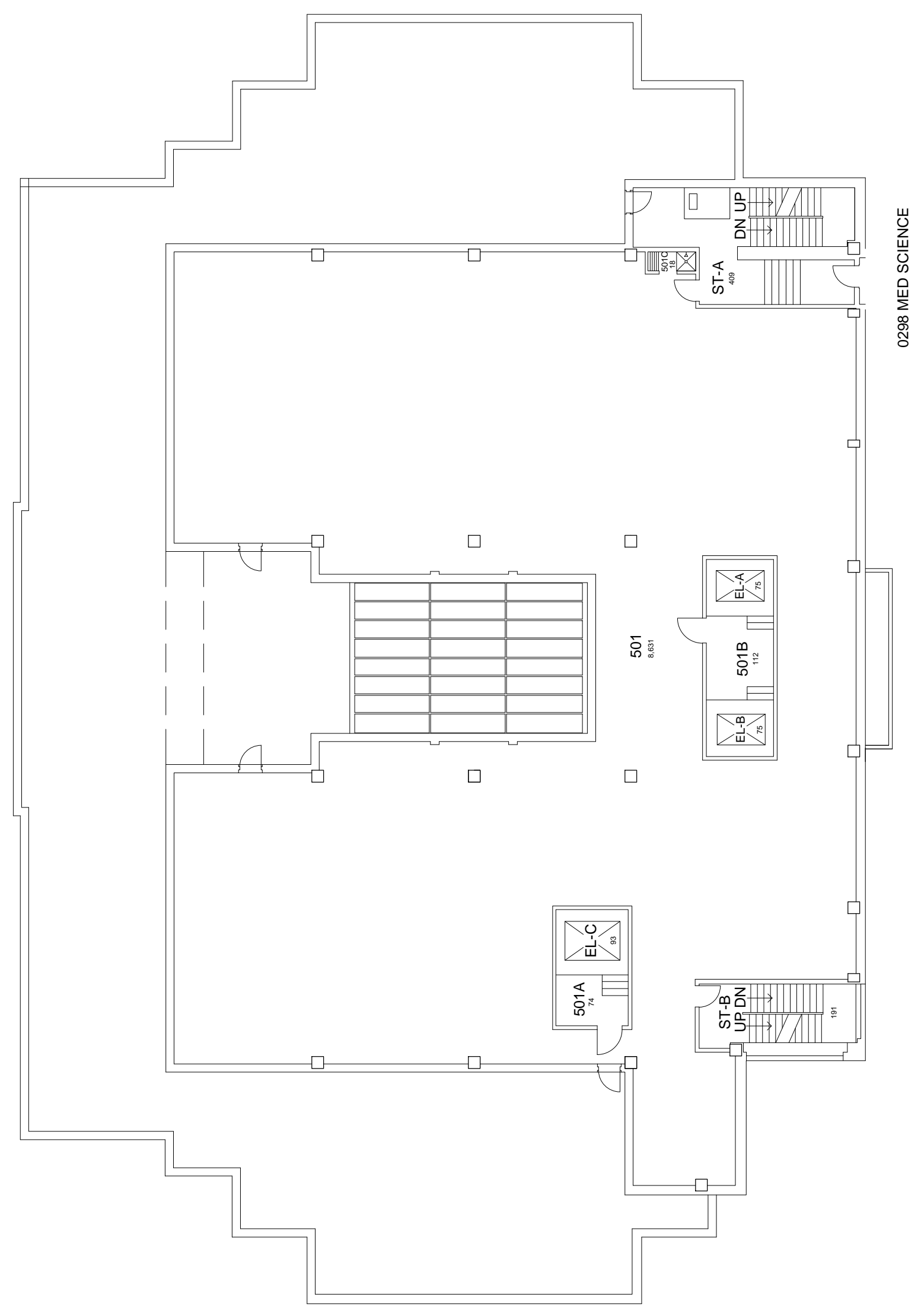
SECOND FLOOR PLAN
PETER P. BOSOMWORTH
HEALTH SCIENCES RESEARCH BUILDING
17,441 Gross Square Ft.



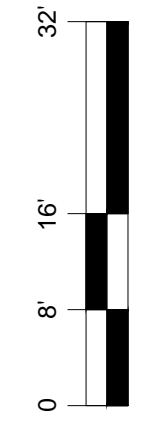
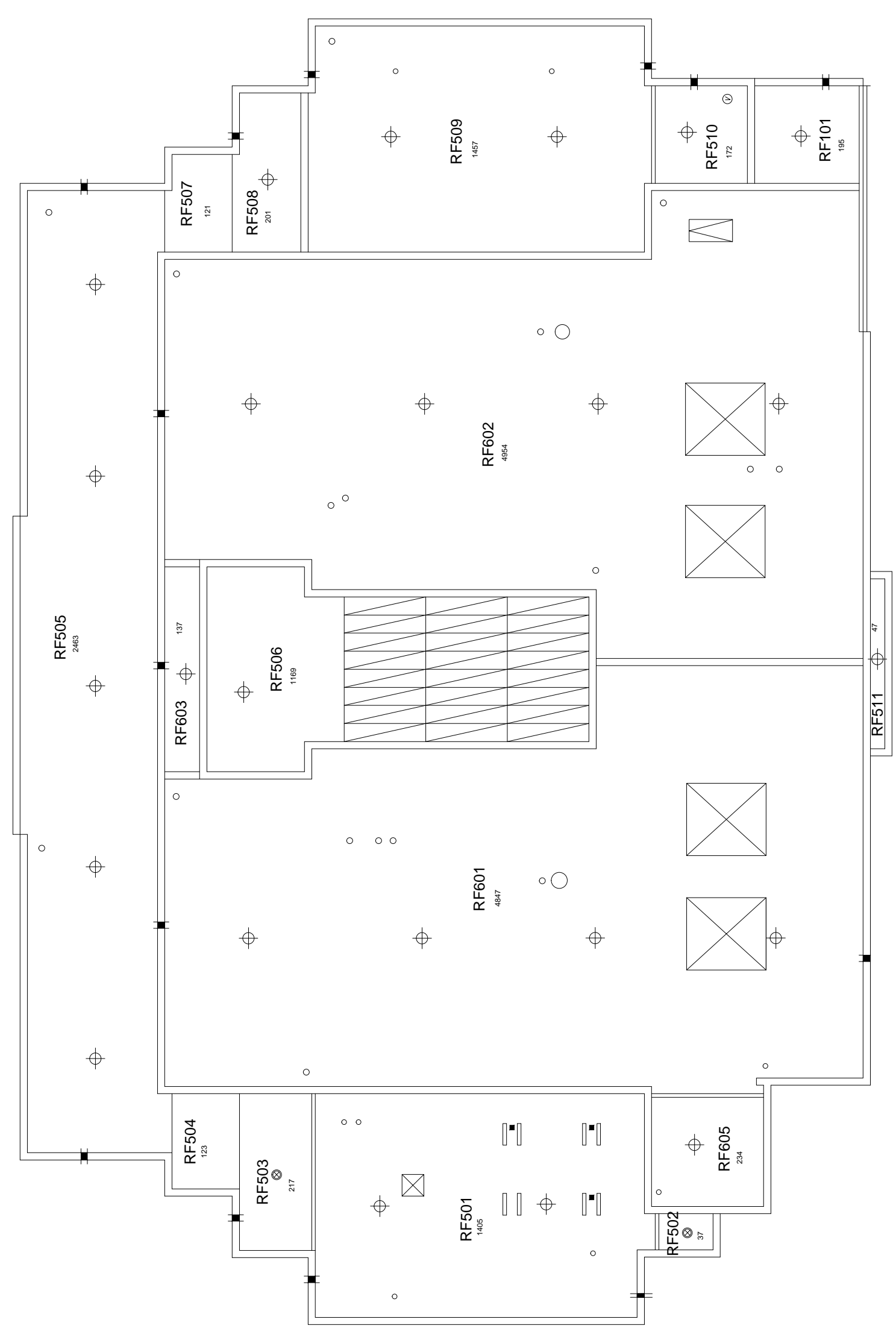
THIRD FLOOR PLAN
 PETER P. BOSOMWORTH
 HEALTH SCIENCES RESEARCH BUILDING
 17,782 Gross Square Ft.



FOURTH FLOOR PLAN
PETER P. BOSOMWORTH
HEALTH SCIENCES RESEARCH BUILDING
17,782 GROSS SQUARE FEET



FIFTH FLOOR PLAN
PETER P. BOSOMWORTH
HEALTH SCIENCES RESEARCH BUILDING
 10,579 Gross Square Ft.



ROOF PLAN
PETER P. BOSOMWORTH
HEALTH SCIENCES RESEARCH BUILDING