



UNIVERSITY OF KENTUCKY Purchasing Division

INVITATION FOR BIDS

CCK-2687-23

ADDENDUM# 8

03/20/2023

ATTENTION: This is not an order. Read all instructions, terms and conditions carefully.

IMPORTANT: BID AND ADDENDUM MUST BE RECEIVED BY: 03/28/2023 @ 3:00 P.M. LEXINGTON, KY TIME

Bidder must acknowledge receipt of this and any addendum as stated in the Invitation for Bids.

1. Please refer to and incorporate into your bid the attached questions and answers and updated drawing provide by the Project Team.
2. If you have any questions, please contact Ken Scott at the number below or at cckbidquestions@uky.edu.

OFFICIAL APPROVAL
UNIVERSITY OF KENTUCKY

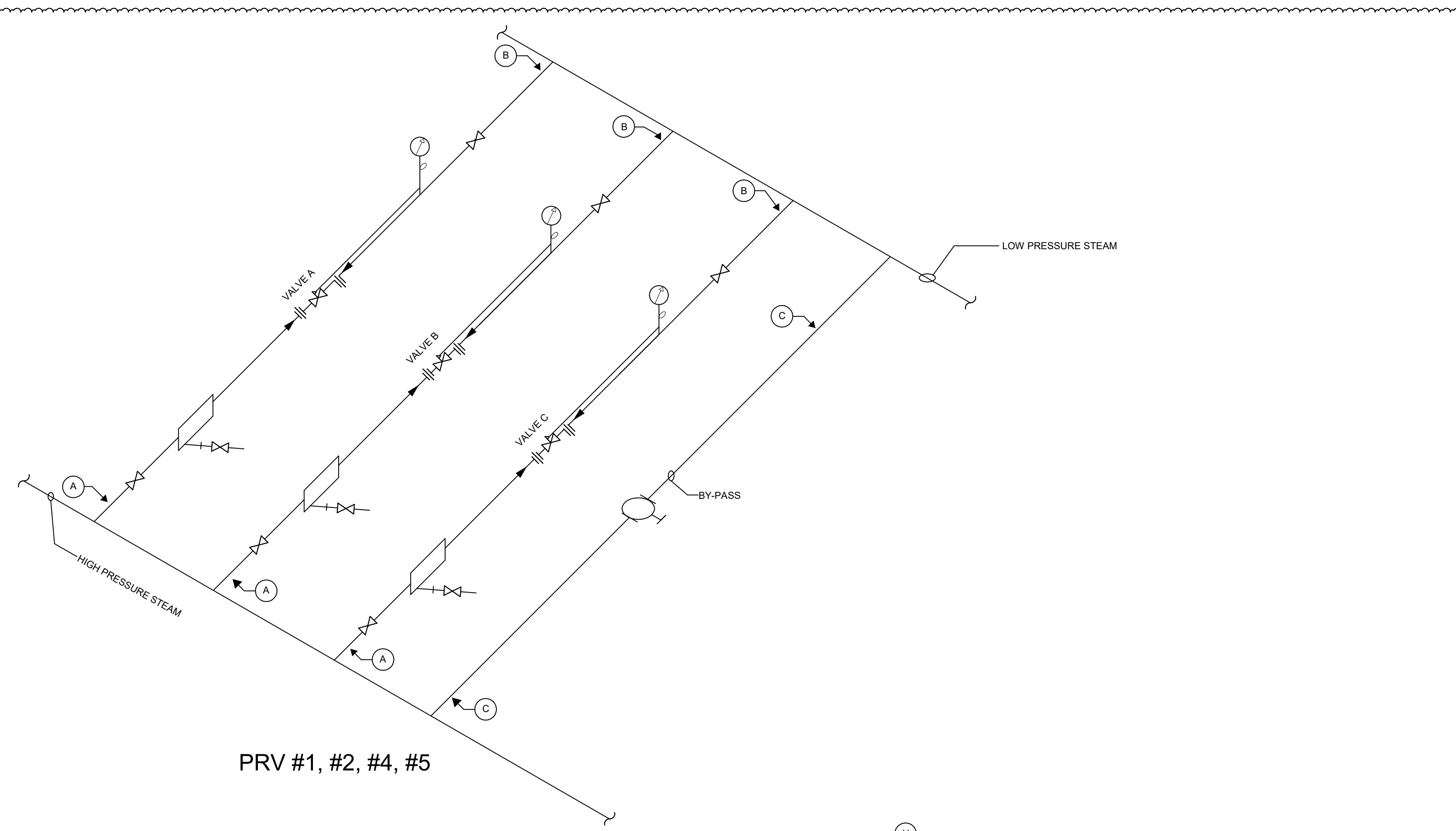
SIGNATURE

Ken Scott _____ 03/20/2023

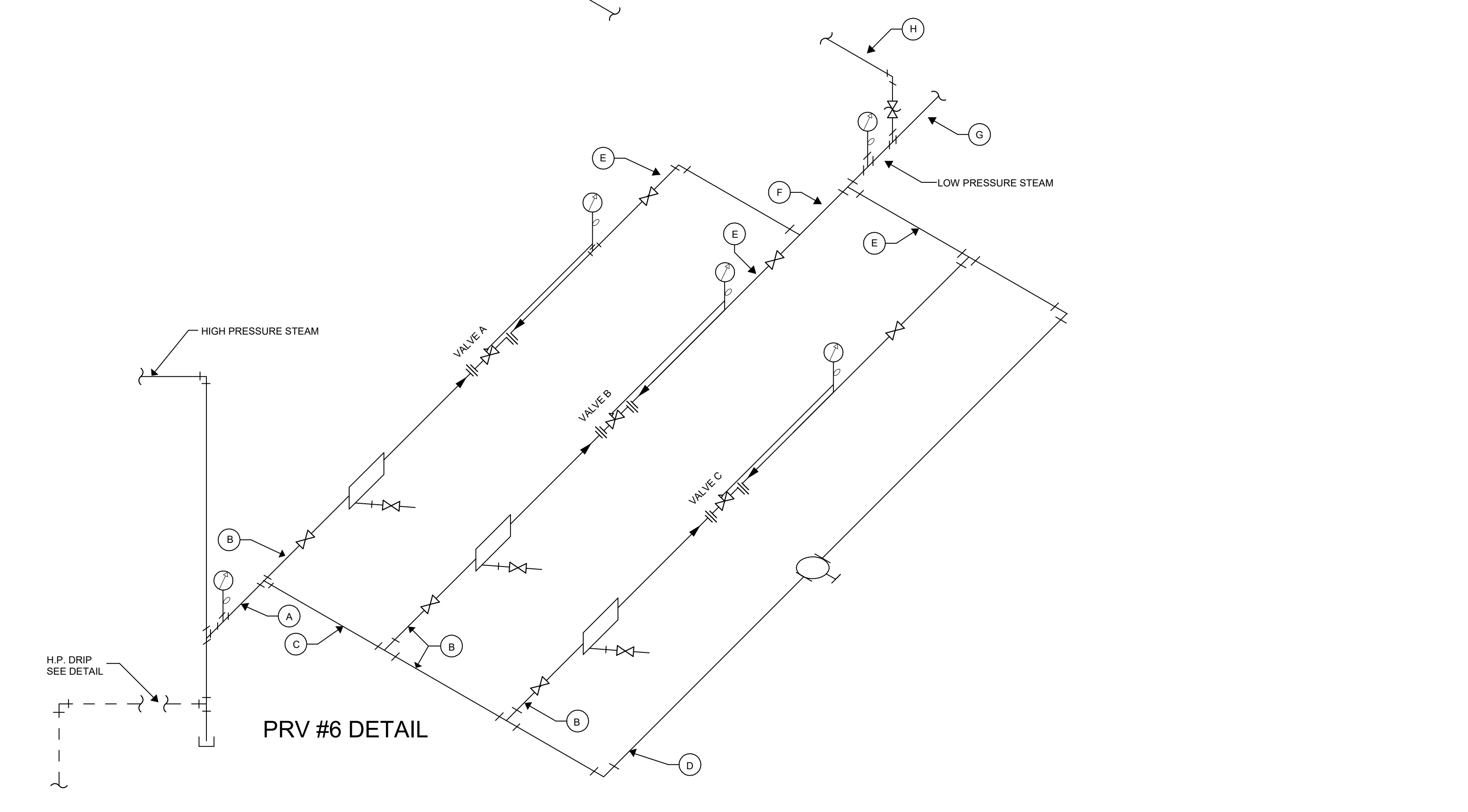
Ken Scott / (859) 257-9102

Typed or Printed Name

Question Date	Question #	Question	Responder	Response
2/28/2023	1.	Are the complete PRV stations and steam coil hook ups to be demoed and replaced? Please confirm, the drawings are confusing, because the demo to symbol and connect to existing say otherwise.	CMTA	Refer to addendum #5 and #8 drawings for demolition scope of prv and coil connections.
	2.	Do the PRV station #1,2,4,5,6 get completely replaced ?	CMTA	Refer to addendum #5 and #8 drawings. PRV stations #1, #2 and #6 are replaced complete in their respective phases. #4 and #5 only piping to the PRV.
	3.	Any work associated with PRV #3, it appears on the schedule, but not on drawings is it included in this project?	CMTA	Refer to revised m3.0 addendum #8.
	4.	Please schedule PRV #5 sizes.	CMTA	Refer to revised m3.0 addendum #8.
	5.	Please provide pipe sizes "D,E,F,G,H" for PRVs 1 & 4.	CMTA	Refer to revised m3.0 addendum #8.
	6.	Is the upper detail of the PRVs shown on drawing M3.0 for PRVs 2,3, & 5?	CMTA	Refer to revised m3.0 addendum #8.
	7.	We assume any asbestos abatement will be handle by the owner	CMTA	Yes



PRV #1, #2, #4, #5



PRV #6 DETAIL

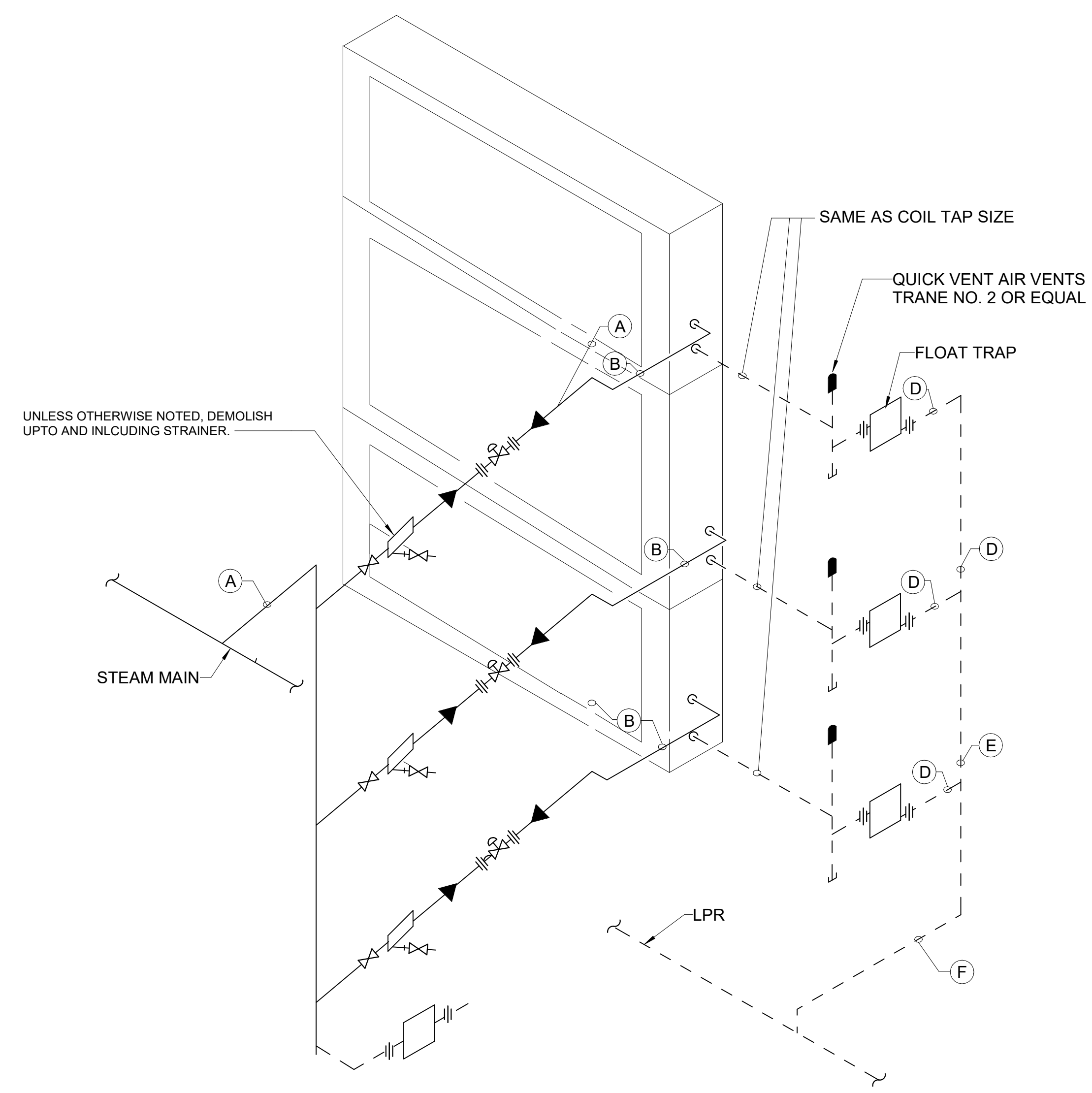
PRESSURE REDUCING VALVE STATION PIPING DETAIL

2 SCALE: NONE

PRV NO.	LOCATION	ENT STEAM PRES.	VALVE A		VALVE B		VALVE C		PIPE SIZES								
			SIZE	#/HR PRES.	SIZE	#/HR PRES.	SIZE	#/HR PRES.	(A)	(B)	(C)	(D)	(E)	(F)	(G)	(H)	
1	H-46	160 PSI	1 1/2"	3750 14 PSI	1 1/2"	3750 13 PSI	-	-	-	3"	6"	2"	-	-	-	-	-
2	H-46	160 PSI	1 1/2"	4052 14 PSI	1 1/2"	4052 13 PSI	1 1/2"	4052 12 PSI	4"	6"	2 1/2"	-	-	-	-	-	
4	H-46	160 PSI	1"	1580 60 PSI	-	-	-	-	2 1/2"	3"	1"	-	-	-	-	-	
5	H-46	160 PSI	1"	1600 25 PSI	-	-	-	-	2 1/2"	4"	1"	-	-	-	-	-	
6	H-46	160 PSI	1 1/2"	4160 7 PSI	1 1/2"	4160 6 PSI	1 1/2"	4160 6 PSI	5"	3"	4"	3"	6"	8"	8"	8"	

STEAM PRESSURE REDUCING STATION COMPONENT SIZES

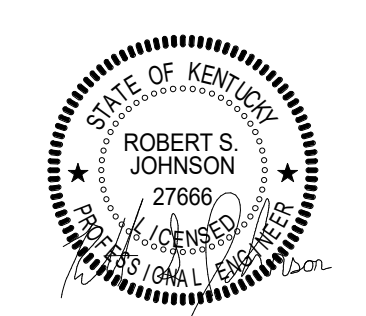
1 SCALE: NONE



SYSTEM	(A)	(B)	(C)	(D)	(E)	(F)	SIZE	TRAP #/HR	NO.
H-5(1)	4"	2 1/2"	-	1 1/2"	-	2"	1"	281	2
(2)		2"	-	1 1/4"	-	1 1/2"	1 1/4"	395	2
H-6	6"	3"	4"	2"		3"	1 1/2"	1500	3
H-7(1)	6"	2 1/2"	3"	1 1/4"	2"	2"	1 1/4"	575	3
(2)		2 1/2"	3"	1 1/4"	2"	2"	1 1/4"	510	3
(3)		2"	3"	1 1/4"		2"	1 1/4"	460	3
H-8(1)	6"	2 1/2"	4"	1 1/2"	2"		1 1/4"	770	3
(2)		2 1/2"	3"	1 1/2"	2"	2"	1 1/4"	690	3
(3)		2 1/2"	3"	1 1/2"	2"	2"	1 1/4"	640	3
H-9(1)	6"	2 1/2"	-	1 1/2"	-	2"	1 1/4"	630	2
(2)		2 1/2"	-	1 1/4"	-	2"	1 1/4"	560	2
(3)		2"	-	1 1/4"	-	2"	1 1/4"	500	2

3 AIR HANDLER COIL COMPONENT SIZES

SCALE: NONE



REVISIONS		
NO.	DESCRIPTION	DATE
1	ADDENDUM #5	3/3/2023
2	ADDENDUM #8	3/20/2023



H46 STEAM PIPING REPLACEMENT			
SCALE	DATE	PROJECT	PROJ. NO.
AS NOTED	08-31-2022	CHANDLER MEDICAL CENTER	111300HSR22

M3.0