

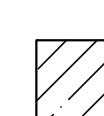

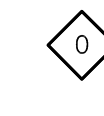



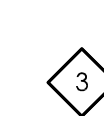

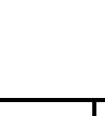

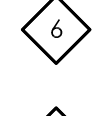
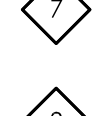



LEGEND

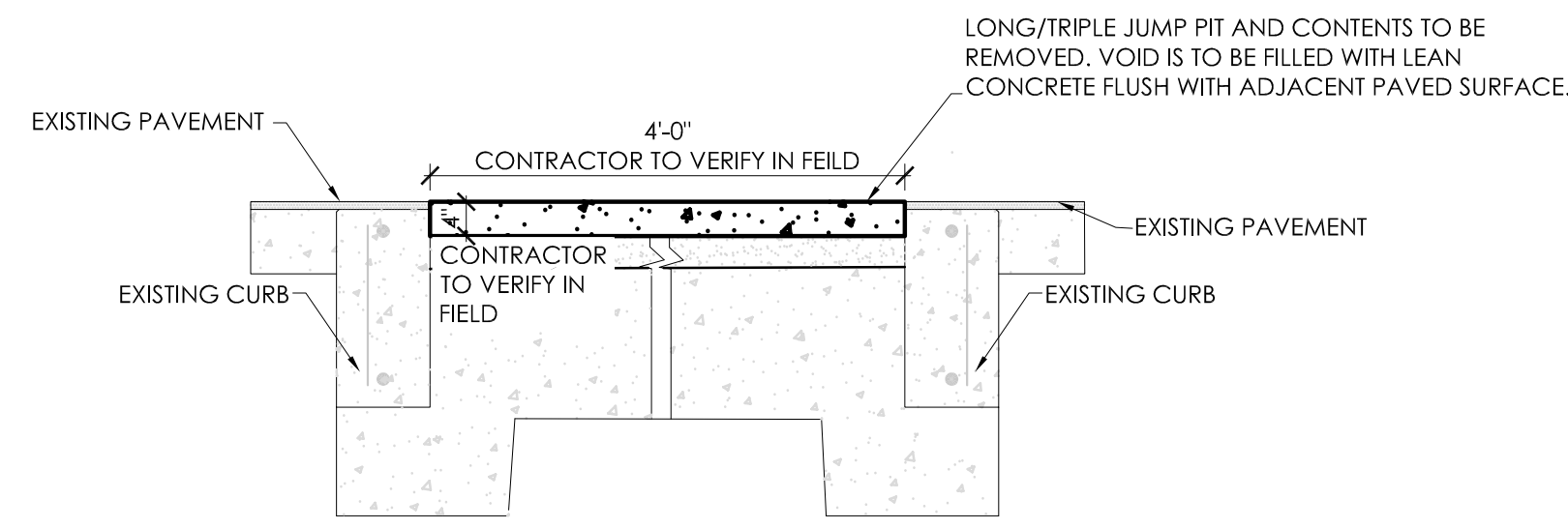
-  SYNTHETIC TURF DEMOLITION
-  RUBBERIZED TRACK SURFACE DEMOLITION
-  SAND PIT DEMOLITION
-  1.5' MILL

SITE DEMOLITION TAGS

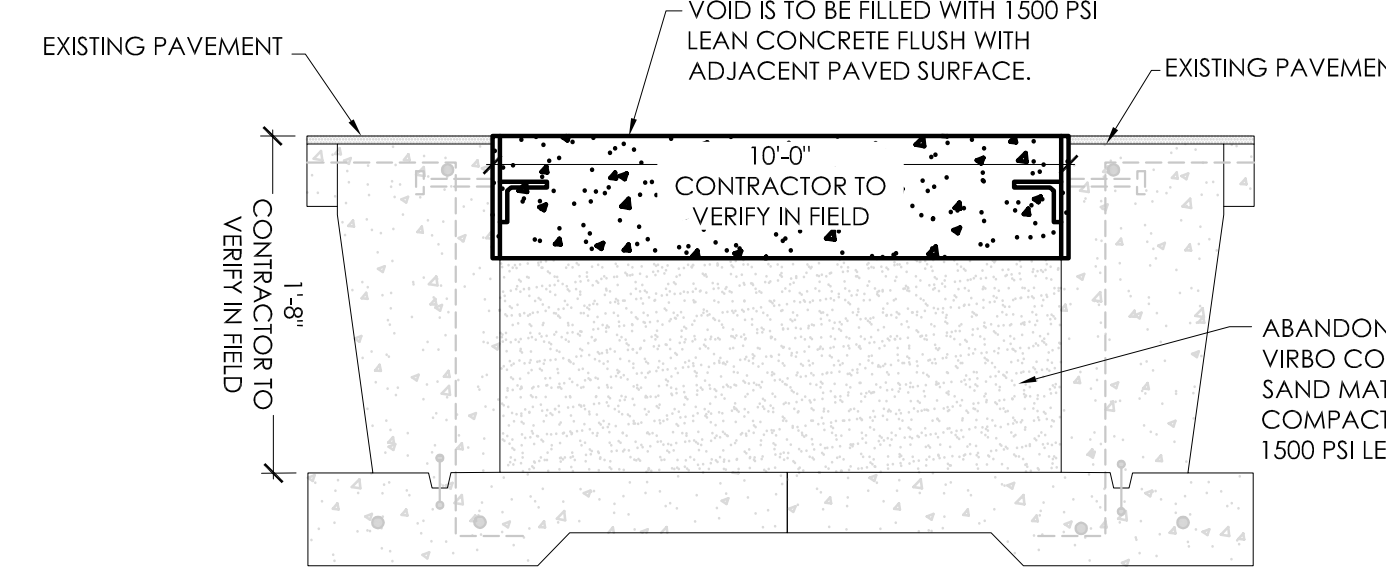
-  EXISTING TO REMAIN. PROTECT THROUGHOUT CONSTRUCTION.
-  [A] BUILDING TO REMAIN. NO UTILITIES TO THESE FACILITIES ARE TO BE REMOVED UNLESS NEW PERMANENT UTILITY IS PROVIDED PRIOR TO DEMOLITION.
-  [B] PAVEMENT TO REMAIN. PATCH/REPAIR WHERE DAMAGED BY CONSTRUCTION. SAW-CUT TO PROVIDE CLEAN EDGE. CONCRETE PAVING TO BE SAW-CUT BACK TO NEAREST UNDAMAGED CONTROL OR ISOLATION JOINT. MATCH NEW ADJACENT PAVEMENT TO EXISTING PAVEMENT ELEVATIONS.
-  REMOVE EXISTING RUBBERIZED TRACK SURFACE.
-  DEMOLISH AND REMOVE EXISTING SAND PIT AND ASSOCIATED AGGREGATE BASE. CONCRETE BASE BELOW SANDPIT IS TO REMAIN. FILL SANDPIT WITH LEAN CONCRETE. LEAN CONCRETE IS TO EXTEND UP TO BE FLUSH WITH ADJACENT ASPHALT. SEE DETAIL D/SDO.1.
-  REMOVE ALL EXISTING TURF CARPET AND INFILL. REMOVE ALL MATERIALS FROM THE FACILITY OR LEGALLY DISPOSE OF. PROTECT EXISTING ASPHALT BASE TO REMAIN.
-  PROVIDE 5-FOOT WIDTH MILL OF EXISTING ASPHALT. MILL SHALL BE GRADUAL AND TAPER FROM 1.5' DEEP AT THE PERIMETER WALL TO 0". SEE DETAIL B/SDO.1.
-  REMOVE EXISTING VAULT BOX. FILL VOID FROM REMOVED BOXED WITH LEAN CONCRETE. LEAN CONCRETE IS TO EXTEND UP TO BE FLUSH WITH ADJACENT ASPHALT PAVEMENT. SEE DETAIL C/SDO.1.
-  DEMOLISH AND REMOVE EXISTING RUNWAY. FILL VOID FROM REMOVED RUNWAY WITH LEAN CONCRETE. LEAN CONCRETE IS TO EXTEND UP TO BE FLUSH WITH ADJACENT ASPHALT PAVEMENT. SEE DETAIL E/SDO.1.
-  EXISTING UTILITY BOX TO BE ABANDONED IN PLACE. INSTALL MULTIPLE LAYERS OF PLYWOOD AS NECESSARY TO MAKE TOP LEVEL OF PLYWOOD FLUSH WITH ADJACENT PAVEMENTS.
-  CONTRACTOR IS TO INSTALL ASPHALT PATCH MATERIAL WHERE EXISTING PAVEMENT WAS MILLED ON INSIDE OF TRACK.

GENERAL DEMOLITION NOTES

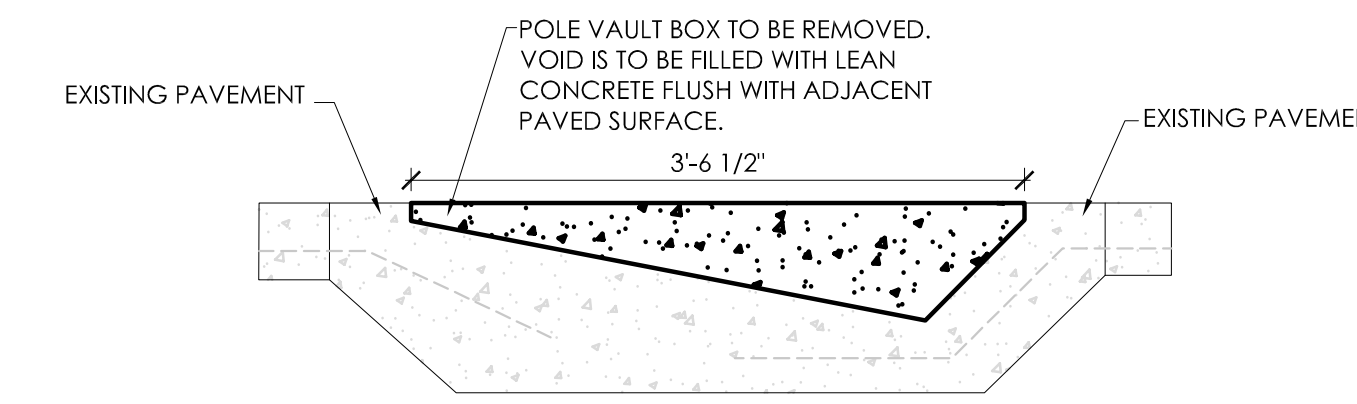
1. THESE DEMOLITION PLANS ARE MEANT TO BE A CONVENIENCE TO THE CONTRACTOR. CONTRACTOR IS RESPONSIBLE FOR ALL DEMOLITION WORK NECESSARY FOR INSTALLATION OF NEW WORK WHETHER SHOWN HERE OR NOT.
2. REFER TO SECTIONS AND DETAILS FOR ADDITIONAL DEMOLITION WORK REQUIRED IN SPECIFIC AREAS OF WORK.
3. ALL MECHANICAL, ELECTRICAL, AND PLUMBING EQUIPMENT WHICH ARE ABANDONED AND/OR CALLED OUT TO BE REMOVED. OPENINGS SHALL BE INFILLED WITH NEW CONSTRUCTION. REFER TO NOTE '1' ABOVE.
4. WHERE EXISTING EQUIPMENT IS REMOVED, REMOVE ALL ASSOCIATED ATTACHMENT DEVICES, ANCHORS ETC., PATCH AND REPAIR EXISTING FINISHES.
5. SEE LAYOUT AND DEVELOPMENT PLANS FOR NEW WORK TO BE INSTALLED.



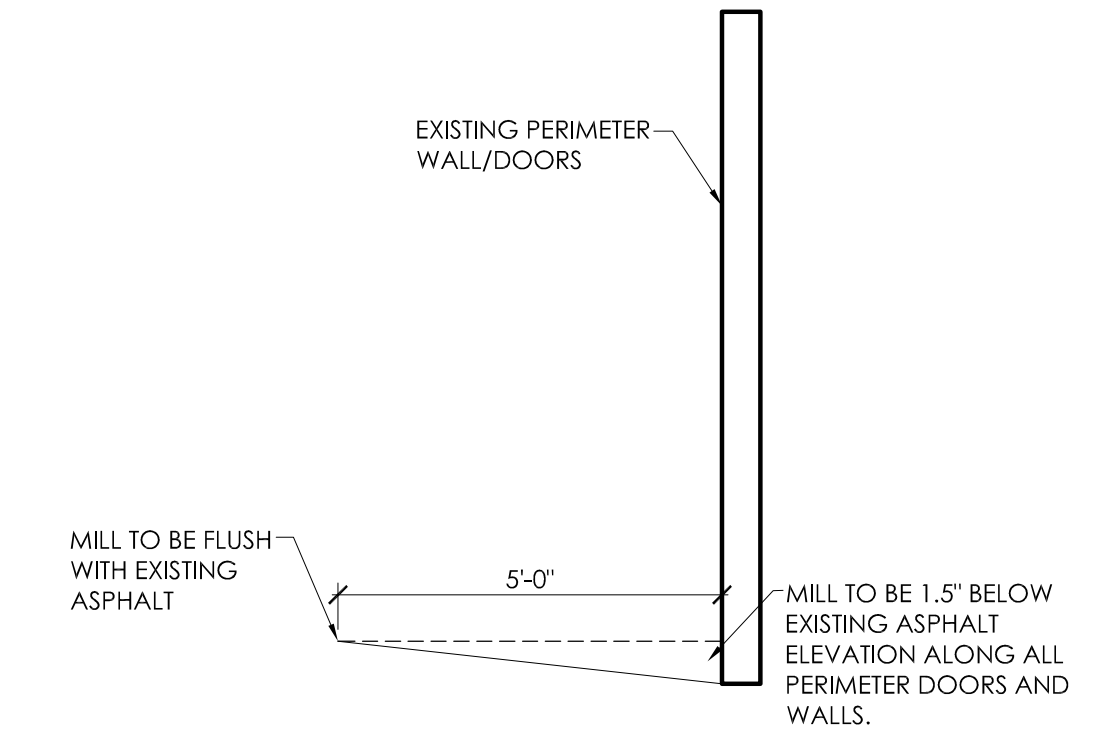
LONG/ TRIPLE JUMP RUNWAY REMOVAL
SCALE: N.T.S. 



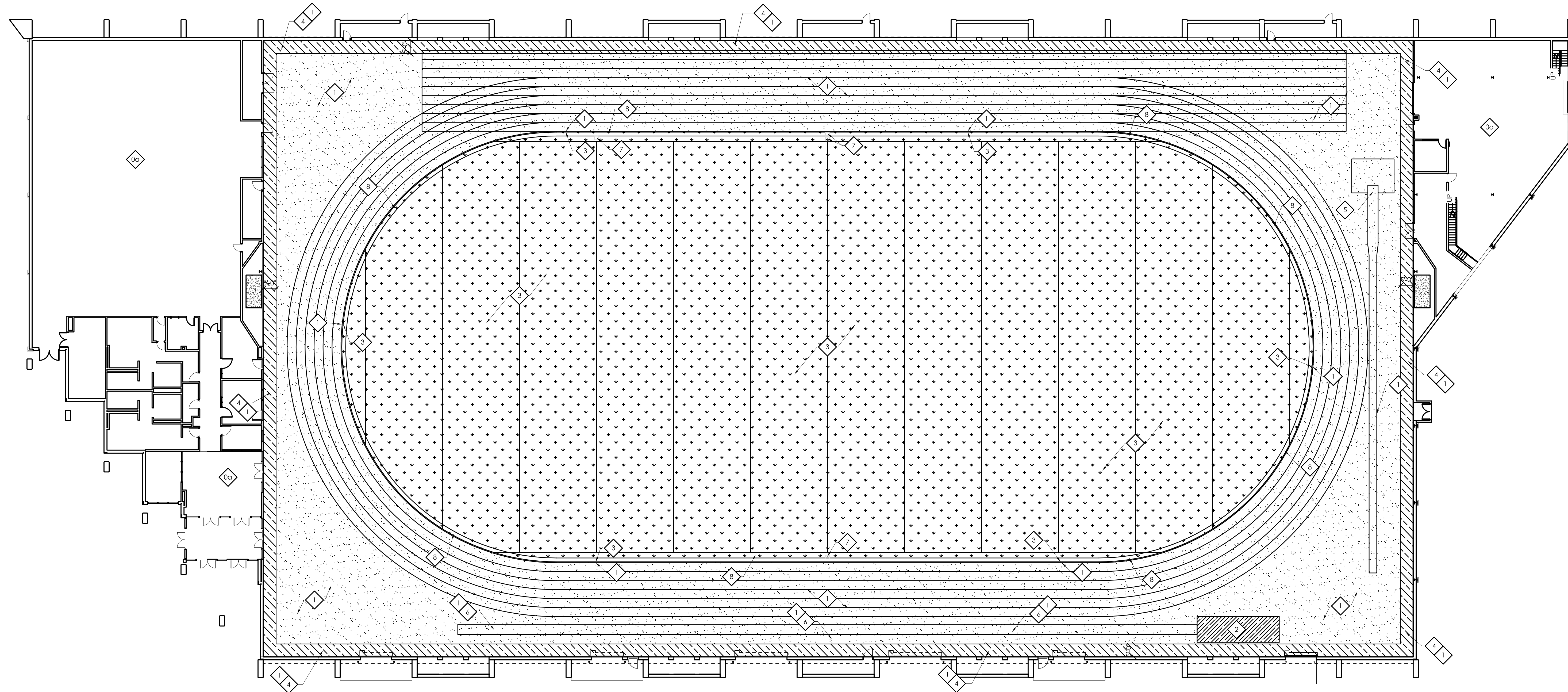
SAND PIT REMOVAL
SCALE: N.T.S. 



POLE VAULT BOX REMOVAL
SCALE: N.T.S. 



PERIMETER ASPHALT MILLING
SCALE: N.T.S. 



DEMOLITION PLAN
UK ATHLETICS SYNTHETIC TURF REPLACEMENT
FOR:
NUTTER FIELD HOUSE
1401 SPORTS CENTER DR. LEXINGTON, KY 40502

UK# 2583.0

Project No: 2272
Drawn By: EGS
Rev'd By: MBM/LMR

SHEET RELEASE	
1	
2	
3	
4	
5	
6	
7	
8	

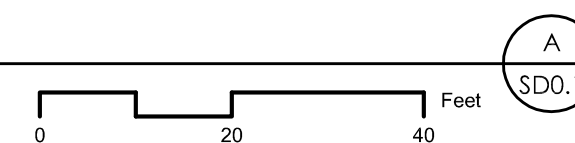
COPYRIGHT © 2022
CONSTRUCTION DOCUMENTS

SDO.1
DEMOLITION PLAN

DATE ISSUED:
12/15/2022

DEMOLITION PLAN

SCALE: 1"=20'





LEGEND



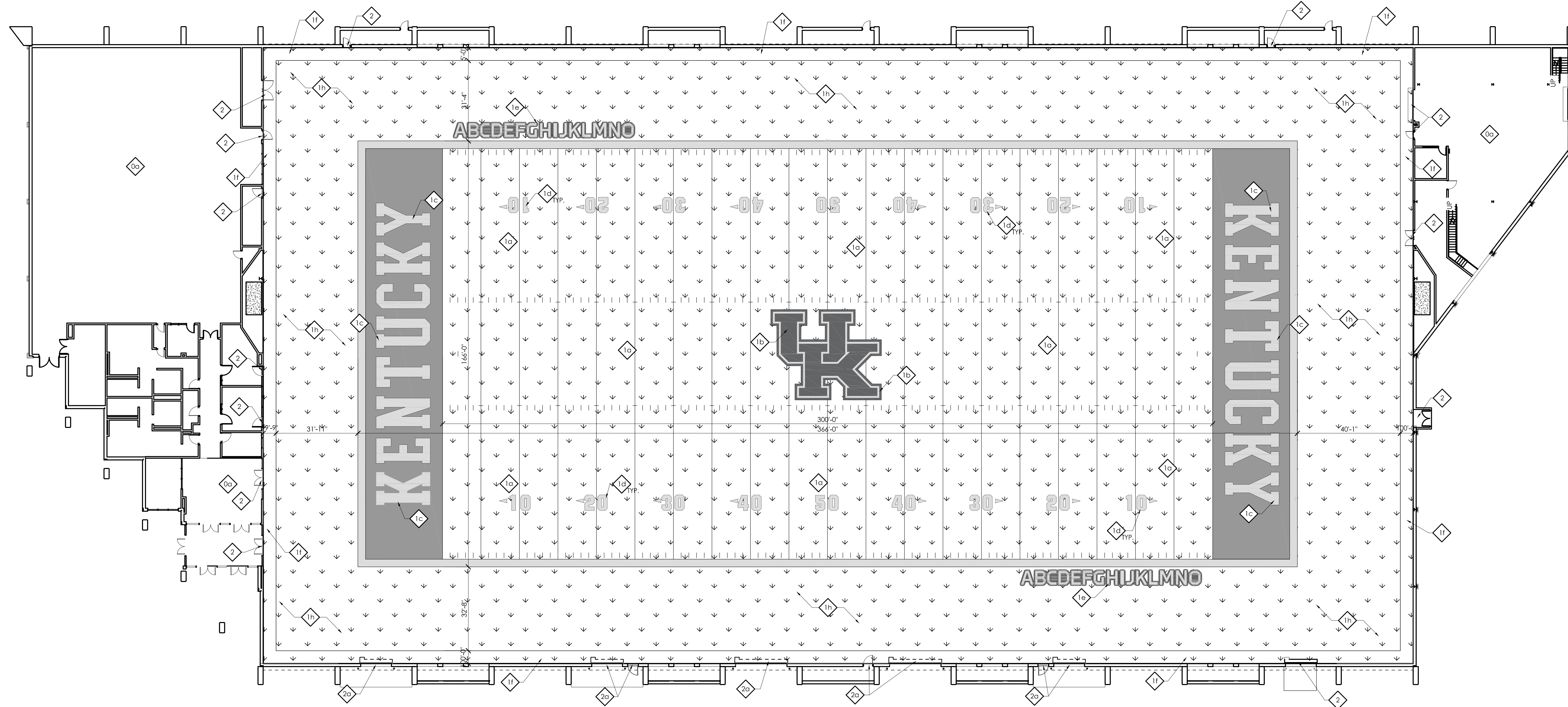
SYNTHETIC TURF

SITE DEVELOPMENT TAGS

- ◊ EXISTING TO REMAIN - PROTECT THROUGHOUT CONSTRUCTION.
 - (a) BUILDING TO REMAIN. NO UTILITIES TO THESE FACILITIES ARE TO BE REMOVED UNLESS NEW PERMANENT UTILITY IS PROVIDED PRIOR TO DEMOLITION.
 - (b) PAVEMENT TO REMAIN - PATCH/REPAIR WHERE DAMAGED BY CONSTRUCTION. SAW-CUT TO PROVIDE CLEAN EDGE. CONCRETE PAVING TO BE SAW-CUT BACK TO NEAREST UNDAUNAGED CONTROL OR ISOLATION JOINT. MATCH NEW ADJACENT PAVEMENT TO EXISTING PAVEMENT ELEVATIONS.
- ◊ SYNTHETIC TURF (21823.29). FINAL COLORS TO BE SUBMITTED FOR APPROVAL BY ARCHITECT AND OWNER.
 - (a) FIELD AREA. COLORS TO BE ALTERNATING GREEN.
 - (b) CENTER FIELD LOGO. SEE DETAIL B/SD4.1.
 - (c) END ZONE TEXT. ON BLUE END ZONE BACKGROUND. SEE DETAIL A/SD4.1.
 - (d) FOOTBALL FIELD NUMBERS AND MARKINGS. WHITE. SEE DETAIL C/SD4.1.
 - (e) SIDELINE LOGO. SEE DETAIL D/SD4.1.
 - (f) NON-FILL SYNTHETIC TURF TRANSITION ZONE. COLOR TO BE BLUE. SEE DETAIL E/SD4.1.
 - (g) WHITE FIELD BORDER.
 - (h) FIELD BOUNDARY AREA. COLOR TO BE GREEN.
- ◊ NEW TRANSITION STRIP AT DOORWAYS. CONTRACTOR IS TO ABUT NEW TURF MATERIALS TO EXISTING DOOR THRESHOLDS. MECHANICALLY FASTEN STRIP OVER THE TURF AND ADJACENT FLOORING/THRESHOLD MATERIALS. TRANSITION STRIP IS TO BE LOWES ITEM #487271 (MODEL #F7000) OR EQUIVALENT.
 - (a) NEW DOORS TO BE INSTALLED BY OTHERS. CONTRACTOR IS TO COORDINATE INSTALLATION OF TRANSITION STRIP AT NEW DOORS TO BE INSTALLED BY OTHERS.

GENERAL PLAN NOTES

1. [NIC] - NOT IN CONTRACT. PROVIDED BY OWNER AND INSTALLED BY OTHERS.
2. DO NOT SCALE DRAWINGS. WRITTEN DIMENSIONS TAKE PRECEDENCE.
3. ALL DIMENSIONS ARE TO FACE OF MASONRY UNLESS OTHERWISE NOTED. CONTACT ARCHITECT WITH ANY QUESTIONS REGARDING DIMENSIONS.



LAYOUT AND DEVELOPMENT PLAN
 UK ATHLETICS SYNTHETIC TURF REPLACEMENT
 FOR:
 NUTTER FIELD HOUSE
 1401 SPORTS CENTER DR. LEXINGTON, KY 40502

UK# 2583.0

Project No: 2272
 Drawn By: EGS
 Rev'd By: MBM/LMR

SHEET RELEASE	
1	
2	
3	
4	
5	
6	
7	
8	

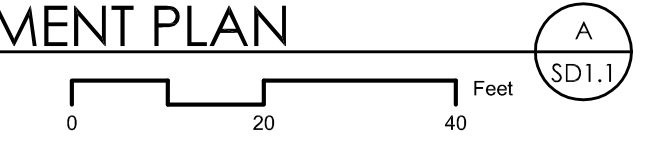
COPYRIGHT © 2022
 CONSTRUCTION DOCUMENTS

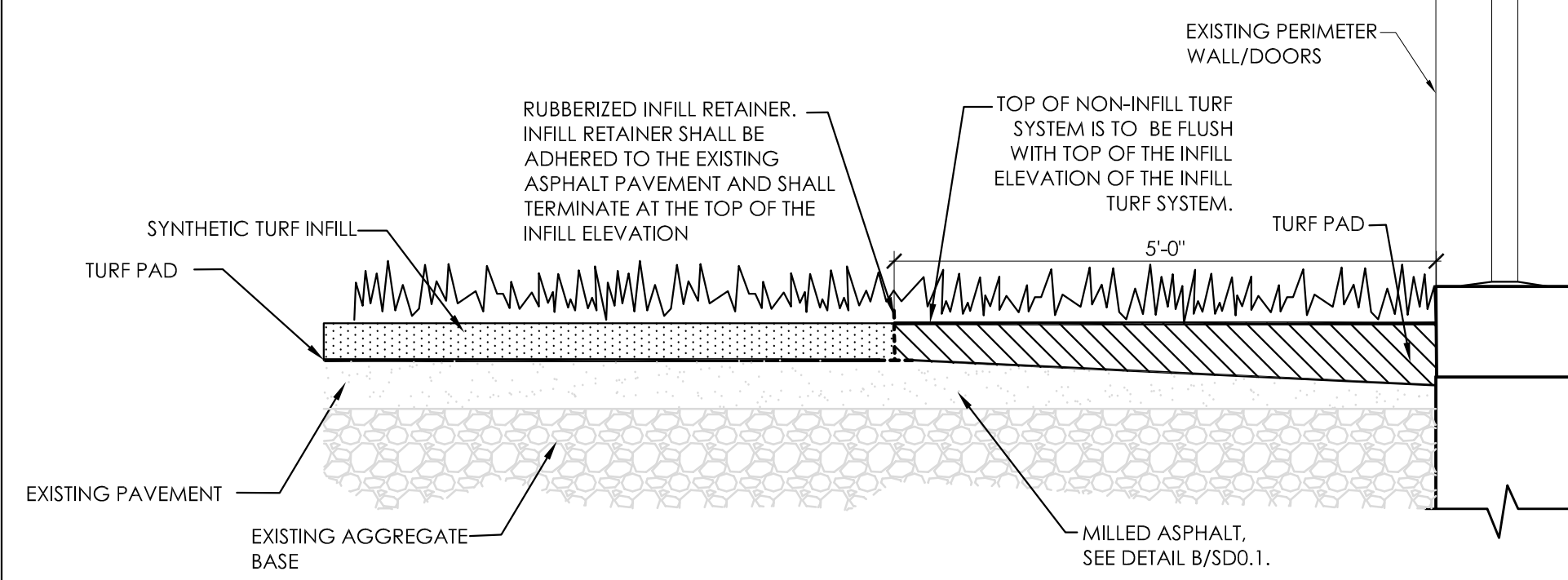
SD1.1

LAYOUT & DEVELOPMENT PLAN
 DATE ISSUED:
 12/15/2022

LAYOUT AND DEVELOPMENT PLAN

SCALE: 1"=20'

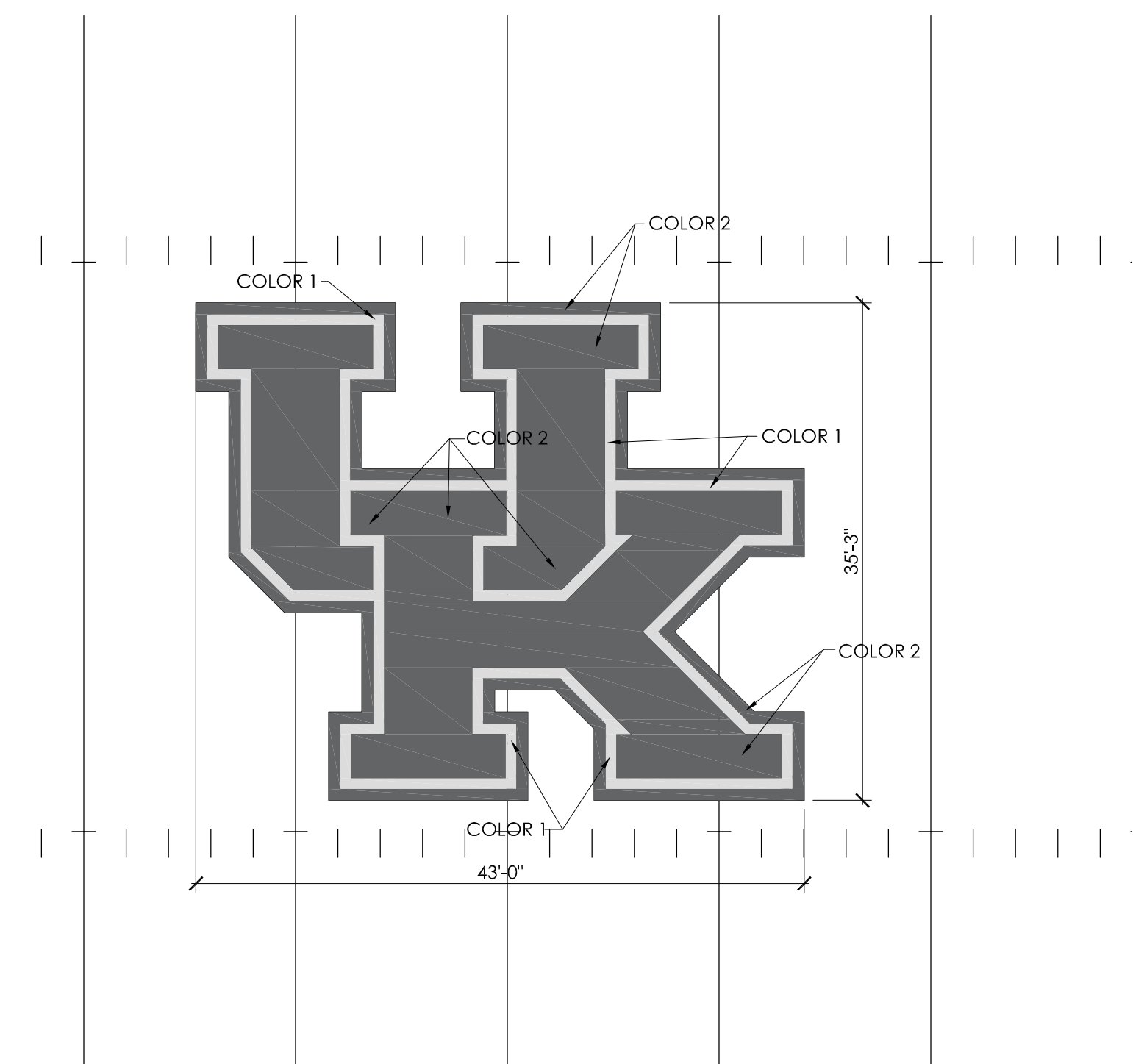




PERIMETER WARNING TRACK TURF DETAIL
SCALE: N.T.S.

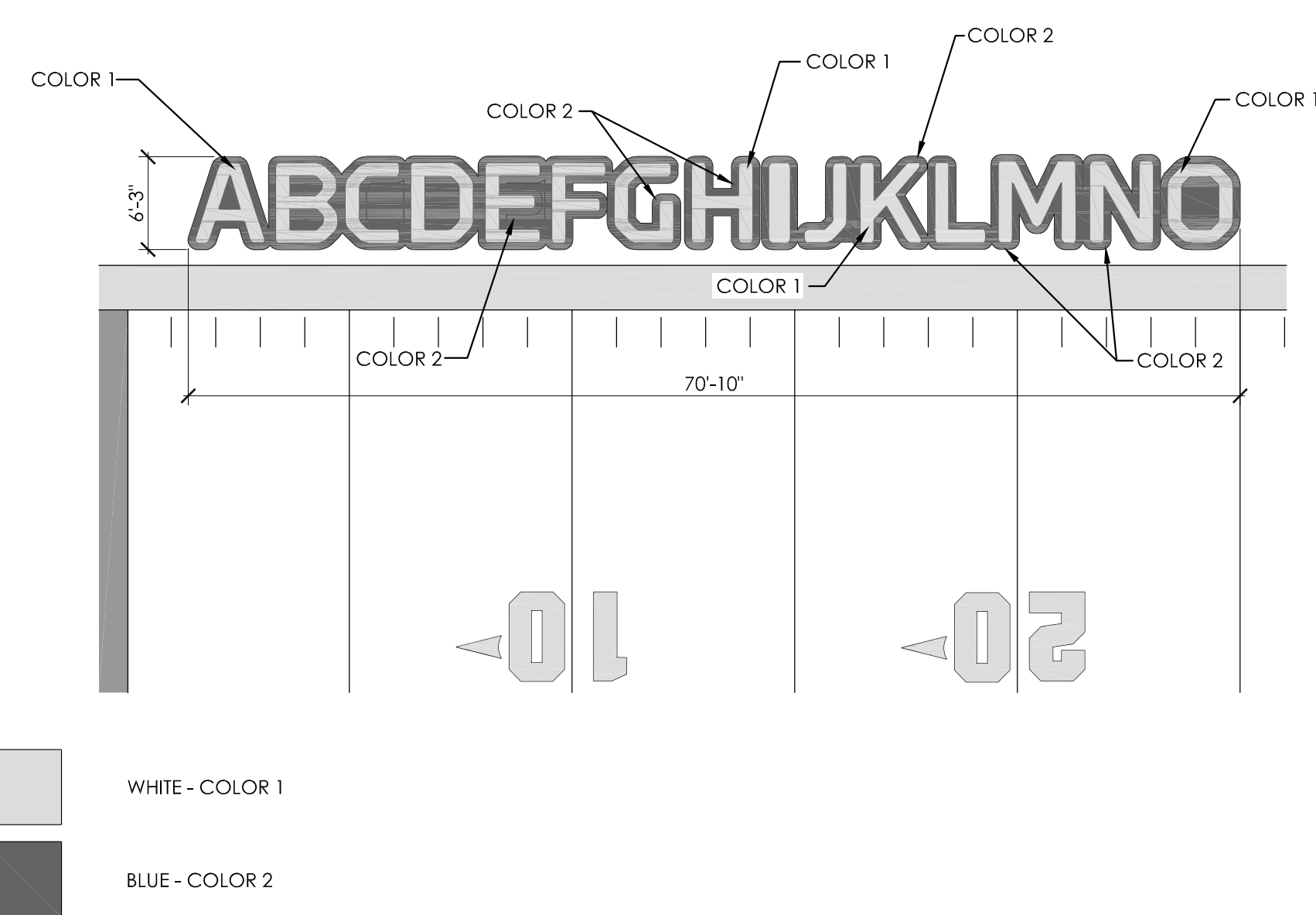
NOTE:
1. CENTER FIELD SYNTHETIC TURF LOGO TO BE SCHOOL LOGO AS INDICATED ON DRAWINGS. BODY OF THE 'UK' LOGO TO BE BLUE WITH A WHITE OUTLINE AND A BLUE OUTLINE ON THE OUTSIDE. FINAL COLOR SELECTION TO BE SUBMITTED FOR APPROVAL BY THE ARCHITECT. OWNER WILL PROVIDE CENTER FIELD LOGO TO TURF MANUFACTURER.

WHITE - COLOR 1
BLUE - COLOR 2



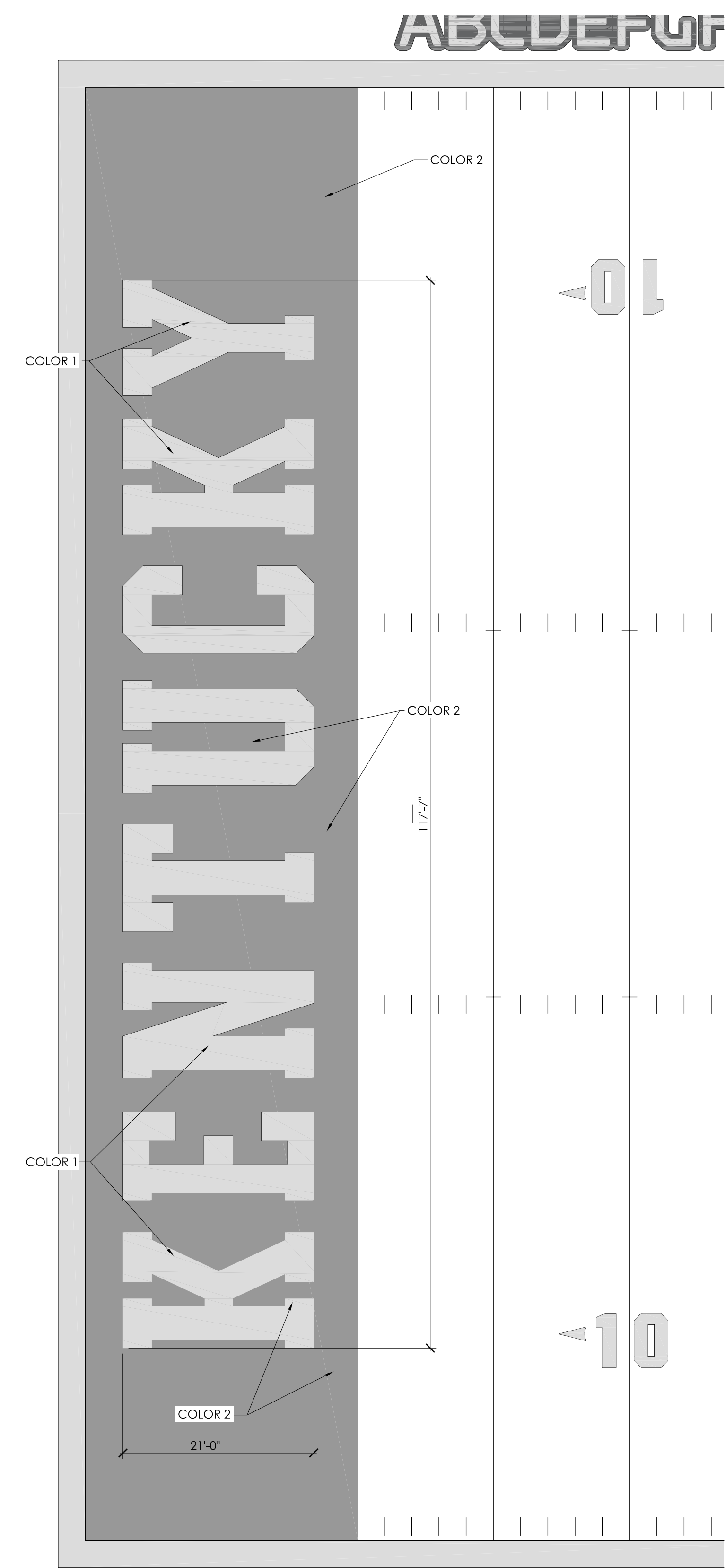
CENTER FIELD LOGO
SCALE: 1" = 10'-0"

NOTE:
1. SIDELINE SYNTHETIC TURF LOGO TO BE SELECTED BY OWNER AT A LATER DATE. OWNER WILL PROVIDE SIDELINE LOGO TO TURF MANUFACTURER. TEXT TO BE WHITE WITH A BLUE OUTLINE. FINAL COLOR SELECTION TO BE SUBMITTED FOR APPROVAL BY THE ARCHITECT.



WHITE - COLOR 1
BLUE - COLOR 2

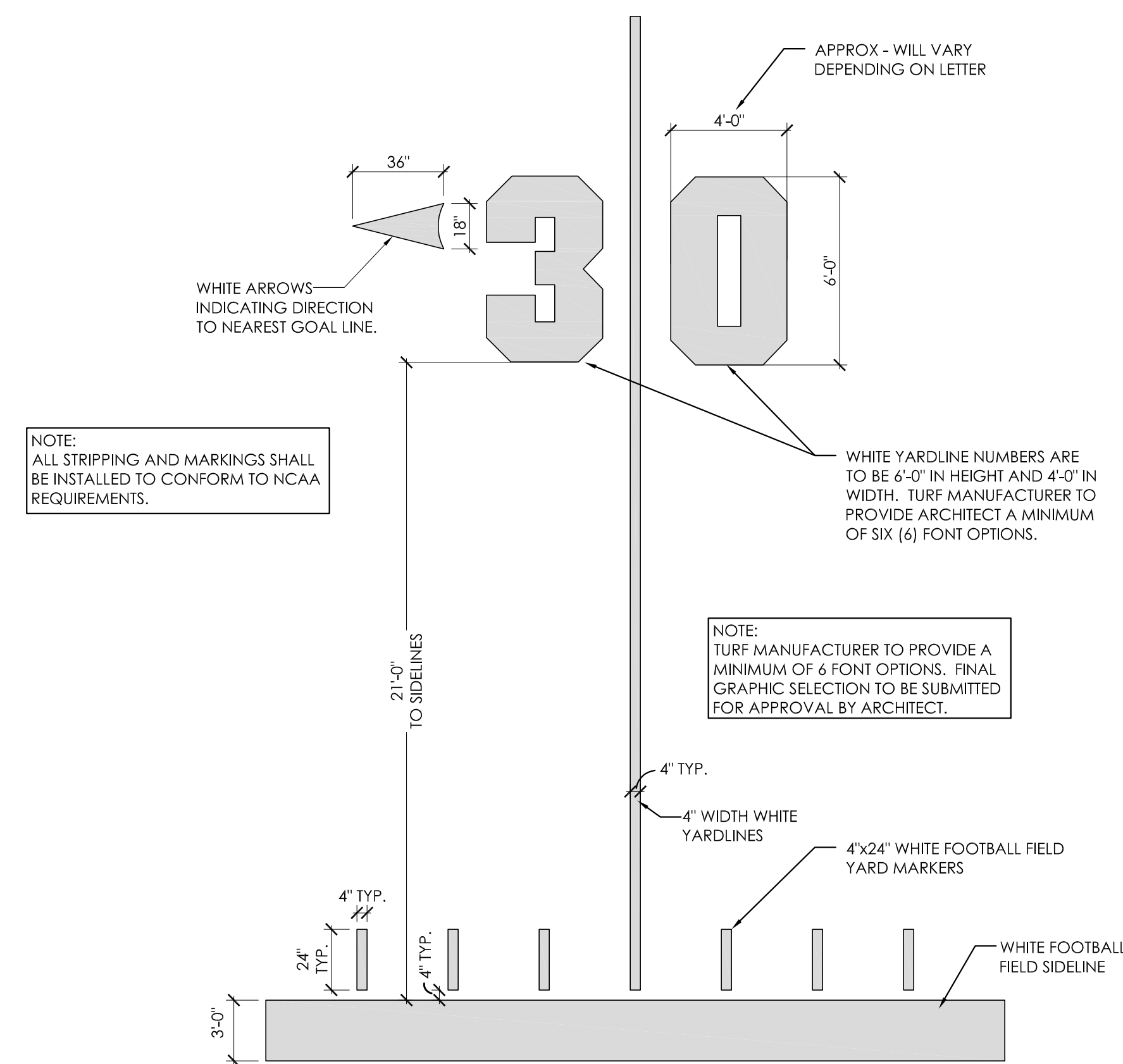
SIDELINE LOGO
SCALE: 1" = 5'-0"



WHITE - COLOR 1
BLUE - COLOR 2

NOTE:
BODY OF END ZONE TEXT IS TO BE 'WHITE' FOR EACH LETTER. BACKGROUND END ZONE COLOR TO BE 'BLUE' FINAL COLORS AND GRAPHIC SELECTION TO BE SUBMITTED FOR APPROVAL BY ARCHITECT. TURF MANUFACTURER TO PROVIDE A MINIMUM OF 6 FONT OPTIONS FOR OWNER SELECTION.

END_ZONE LETTERING
SCALE: 1" = 10'-0"



NOTE:
ALL STRIPPING AND MARKINGS SHALL BE INSTALLED TO CONFORM TO NCAA REQUIREMENTS.

WHITE YARDLINE NUMBERS ARE TO BE 6'-0" IN HEIGHT AND 4'-0" IN WIDTH. TURF MANUFACTURER TO PROVIDE ARCHITECT A MINIMUM OF SIX (6) FONT OPTIONS.

NOTE:
TURF MANUFACTURER TO PROVIDE A MINIMUM OF 6 FONT OPTIONS. FINAL GRAPHIC SELECTION TO BE SUBMITTED FOR APPROVAL BY ARCHITECT.

FIELD NUMBERING AND STRIPING DETAIL
SCALE: 1/4" = 1'-0"

SHEET RELEASE	
1	
2	
3	
4	
5	
6	
7	
8	