

- Conduit
 - 1-1/2" Schedule 80 PVC Electrical Conduit – Local Supplier.
 - Sweeping 90-Degree Elbows for ease of pulling – Local Supplier.
 - Custom sweeping 90-degree conduit section at pylon location
 - Pylon Plug, Seal Cap, and Pylon Cap fittings at pylon location
- Electrical Outlets
 - At least one 120VAC, 15A circuit in each wall box.

Conduit Layout and Pylon Locations

Conduit can be installed for all goal line and back line pylons – totaling eight pylon locations (two pylon locations per corner).

To reduce the number of trenches required to be dug, the conduits in each corner can be laid out so that they extend next to each other along the sideline of the end zone and continue straight to the wall (**FIG. 1**).

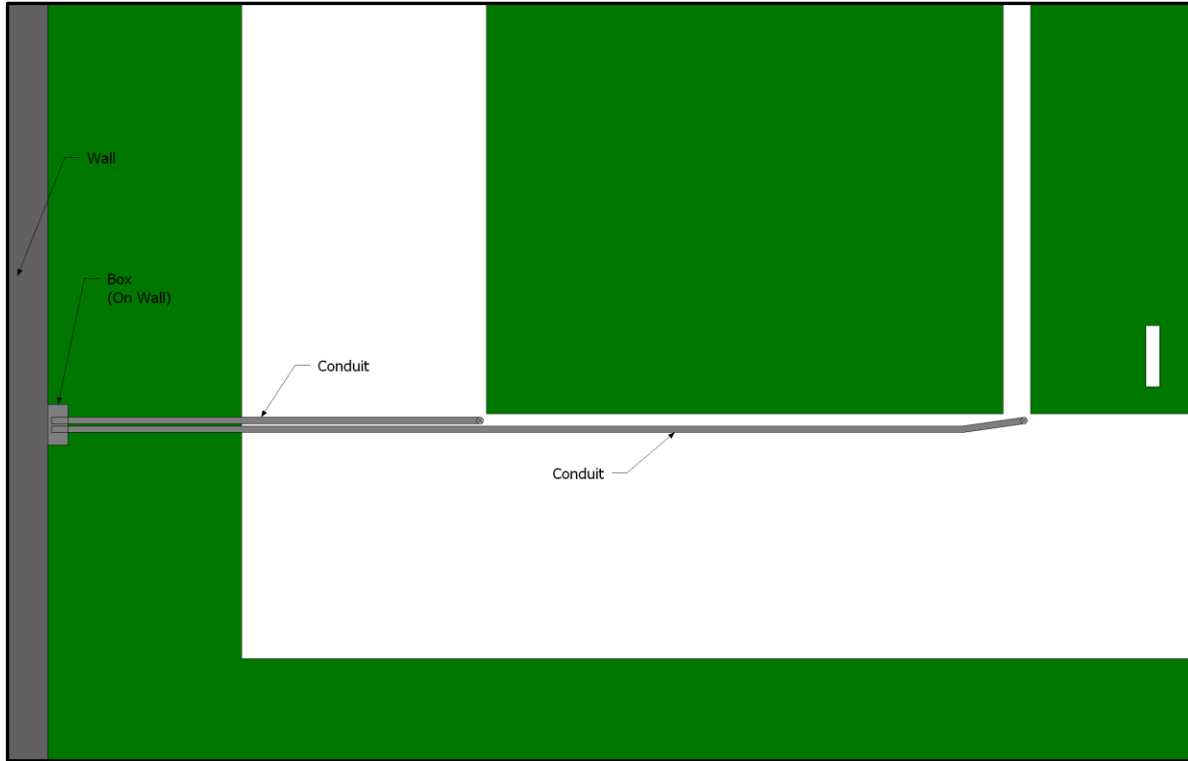


FIG. 1 Example conduit layout and box location. End zone length and distance between pylon locations are not shown to scale.

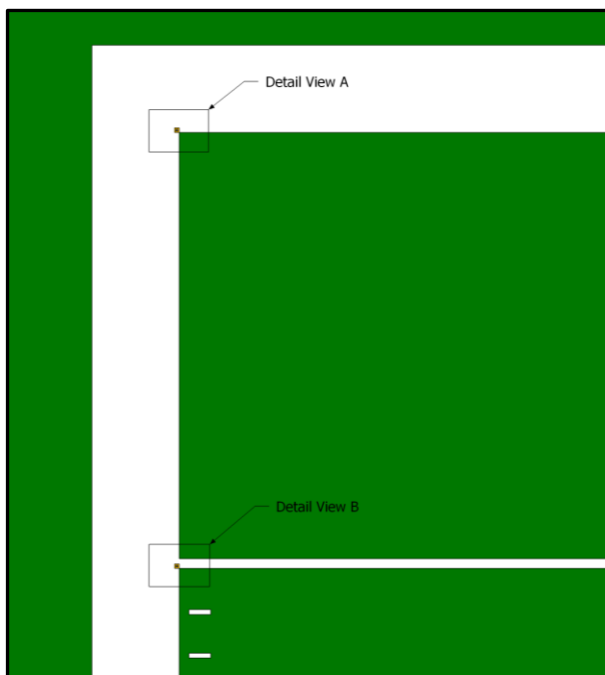


FIG. 2 Overhead view, pylon locations.

Each pylon must be precisely located on the field with respect to the boundary lines (**FIG. 2**). Thus, each conduit must also be precisely located, since the conduit location becomes a reference point for the pylon location. Measurements for locating a back line pylon (**FIG. 2a**) and an end zone pylon (**FIG. 2b**) are shown.

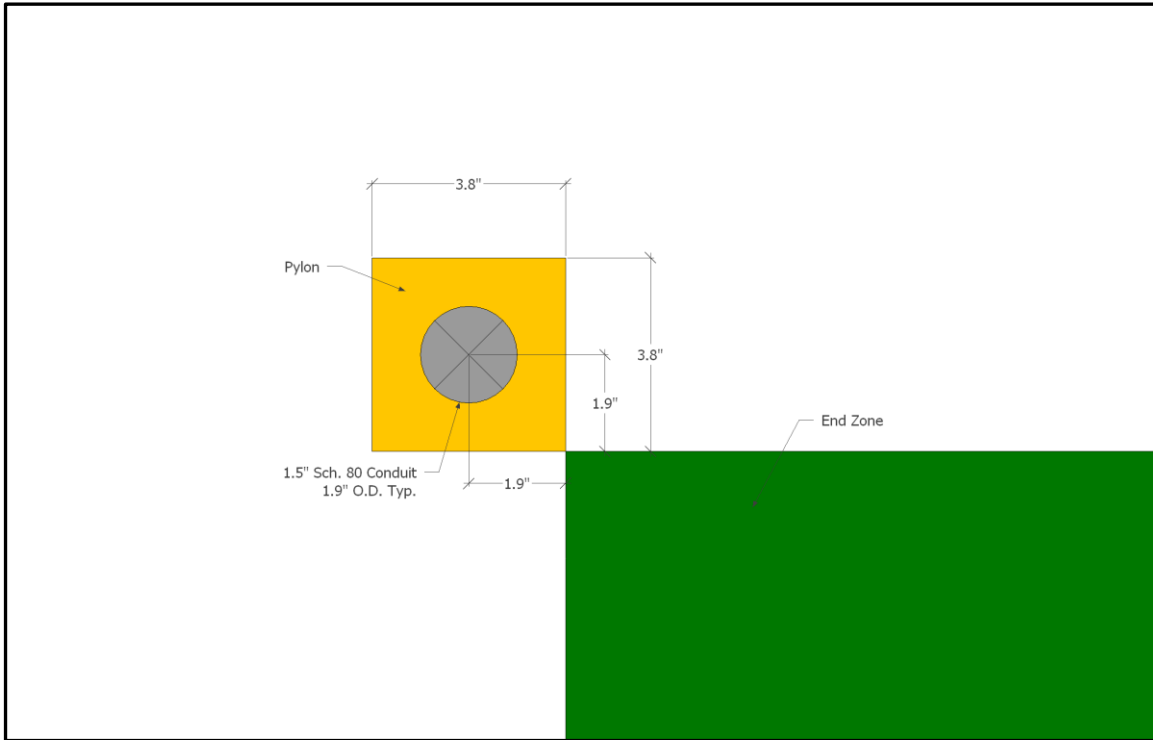


FIG. 2a Detail view, back line pylon location.

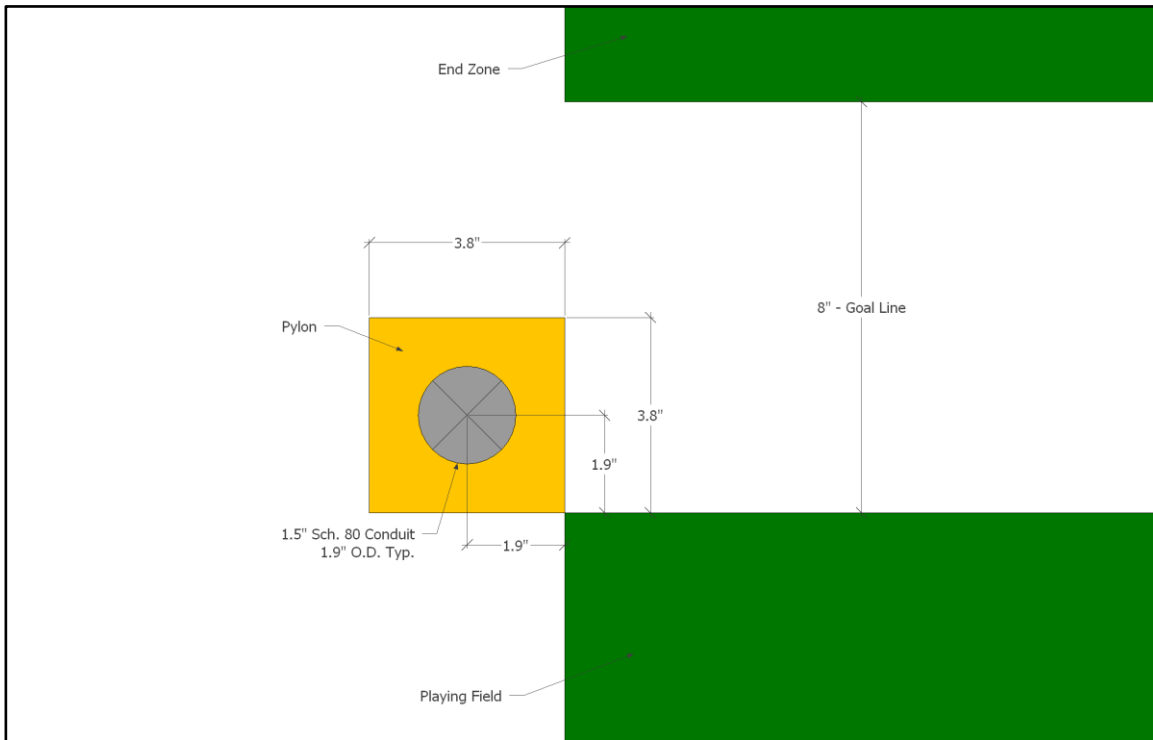


FIG. 2b Detail view, goal line pylon location.

At each pylon location, the final 90-degree conduit section is installed so that the vertical portion of the conduit is centered at the pylon location (**FIG. 3**).

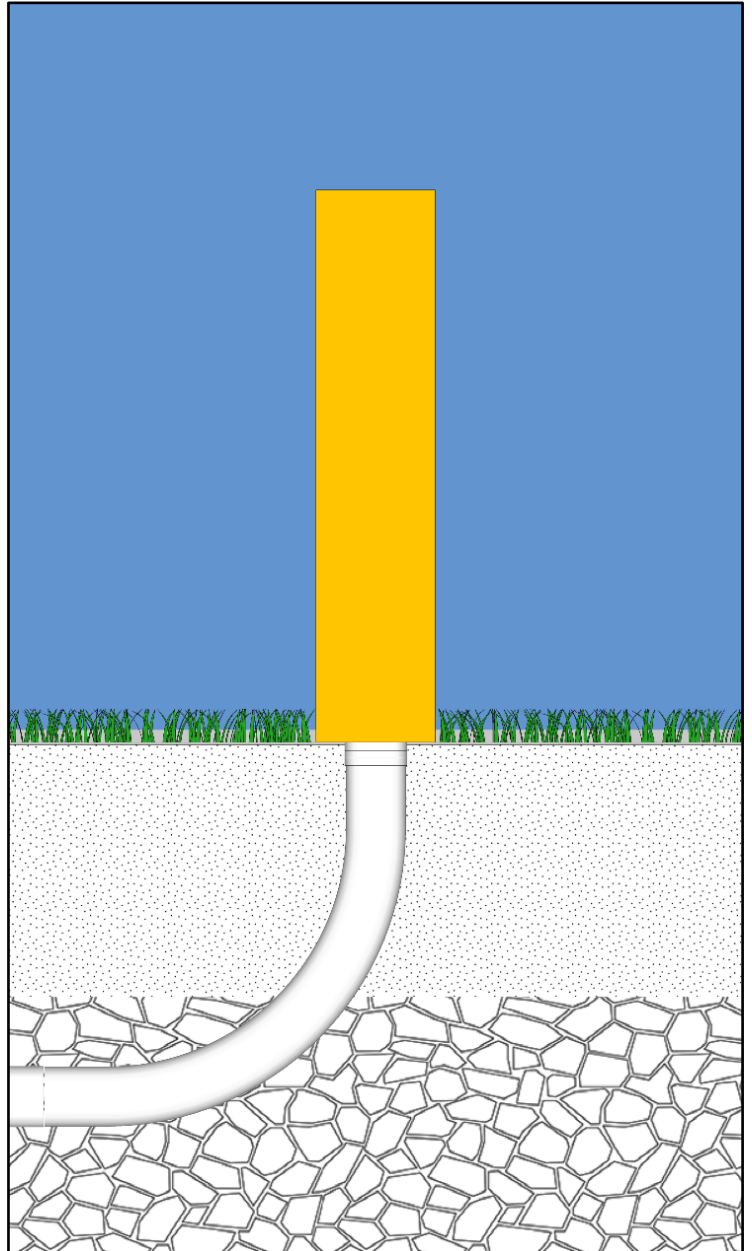


FIG. 3 Side view of custom conduit section at pylon location.

PylonPlug

At the pylon location, a plug sub-assembly is installed in the end of the custom conduit fitting. Specific parts of the plug assembly are made of rubber to provide for impact force absorption and to satisfy Clegg Hammer readings. The PylonPlug assembly can be removed and replaced, allowing access to the conduit without disturbing the surrounding earth.

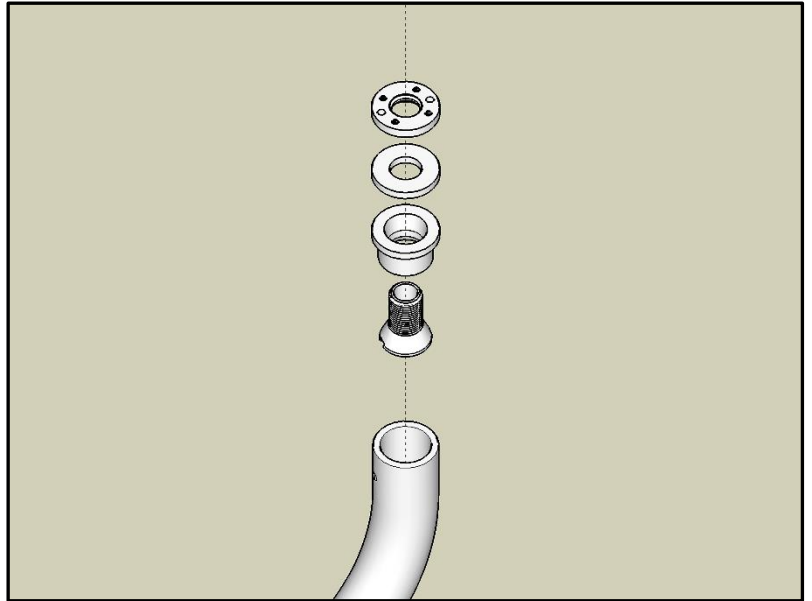


FIG. 5 PylonPlug exploded view.

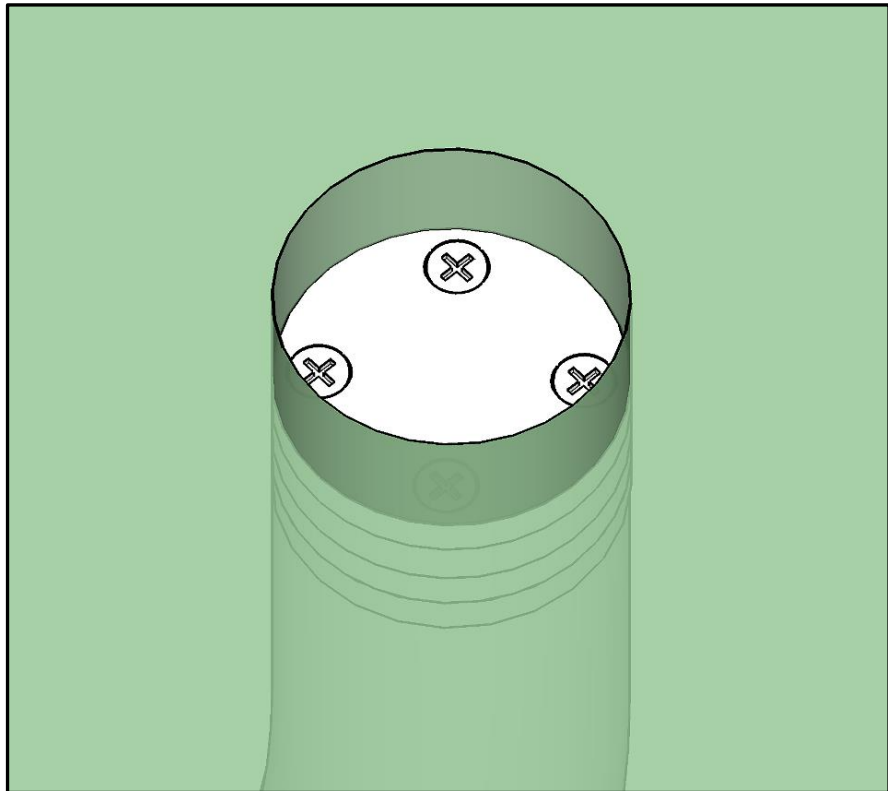


FIG. 7 Installed PylonCap.

PylonCap

A PylonCap can be installed when the PylonCam™ system is not in use. The installed cables remain in place but are pushed down into the top section of the assembly. The cap sits slightly below finished grade so that it does not interfere with mowing or other field maintenance or provide an obstacle to any other activities taking place on the field (FIG. 7).

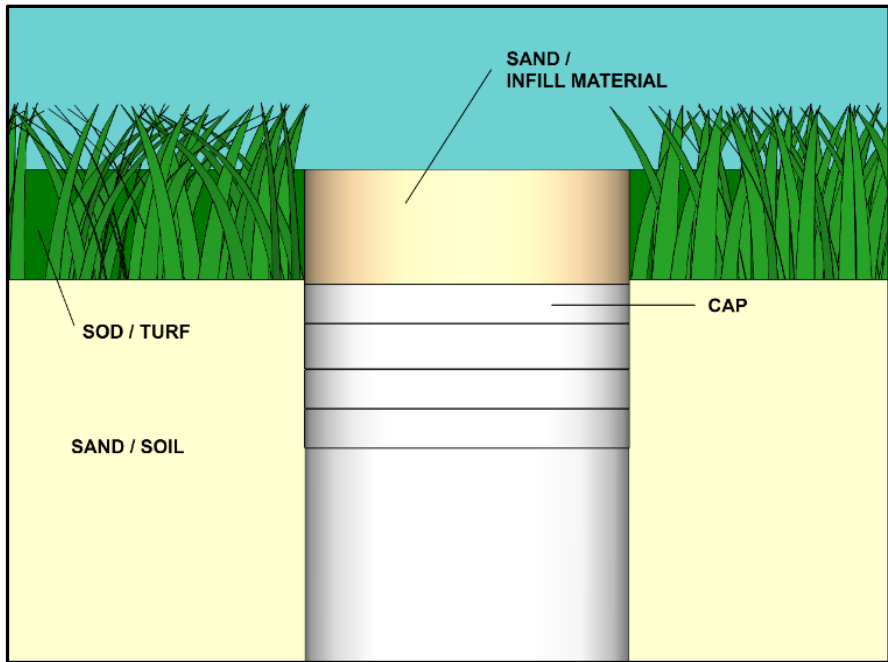


FIG. 8 Cross-section view, installed cap. The sand or infill material sits on top of the cap, creating a surface level with the surrounding ground.

The area above the PylonCap can be infilled with sand or rubber crumb to create a seamless playing surface (FIG. 8). Additionally, the PylonCap can be fitted with tufts of artificial turf if desired.