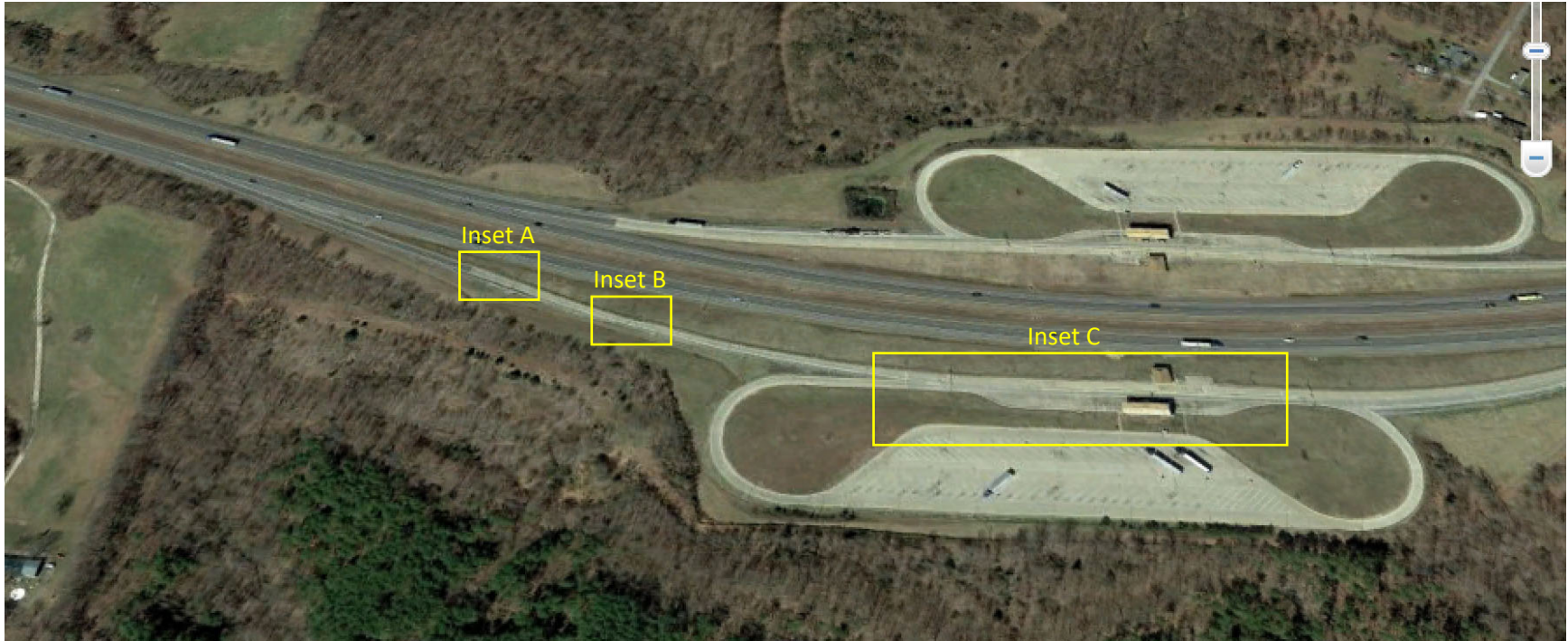


**Lyon County Weigh Station, I-24 Eastbound (EB)**



Location.....Interstate 24 @ MP 36,      Latitude: 37°03'37.43" N,      Longitude: 88°11'01.55" W  
Ramp Speed Limit.....35 mph  
Pavement Type.....Concrete (at WIM and near facility)  
Pavement Condition.....See attached photos  
Inset A diagram.....See page 2 (not to scale)  
Inset B diagram.....See page 3 (not to scale)  
Inset C diagram.....See page 4 (not to scale)  
Site Photos.....See pages 5-11

**Inset A, Eastbound (EB)**

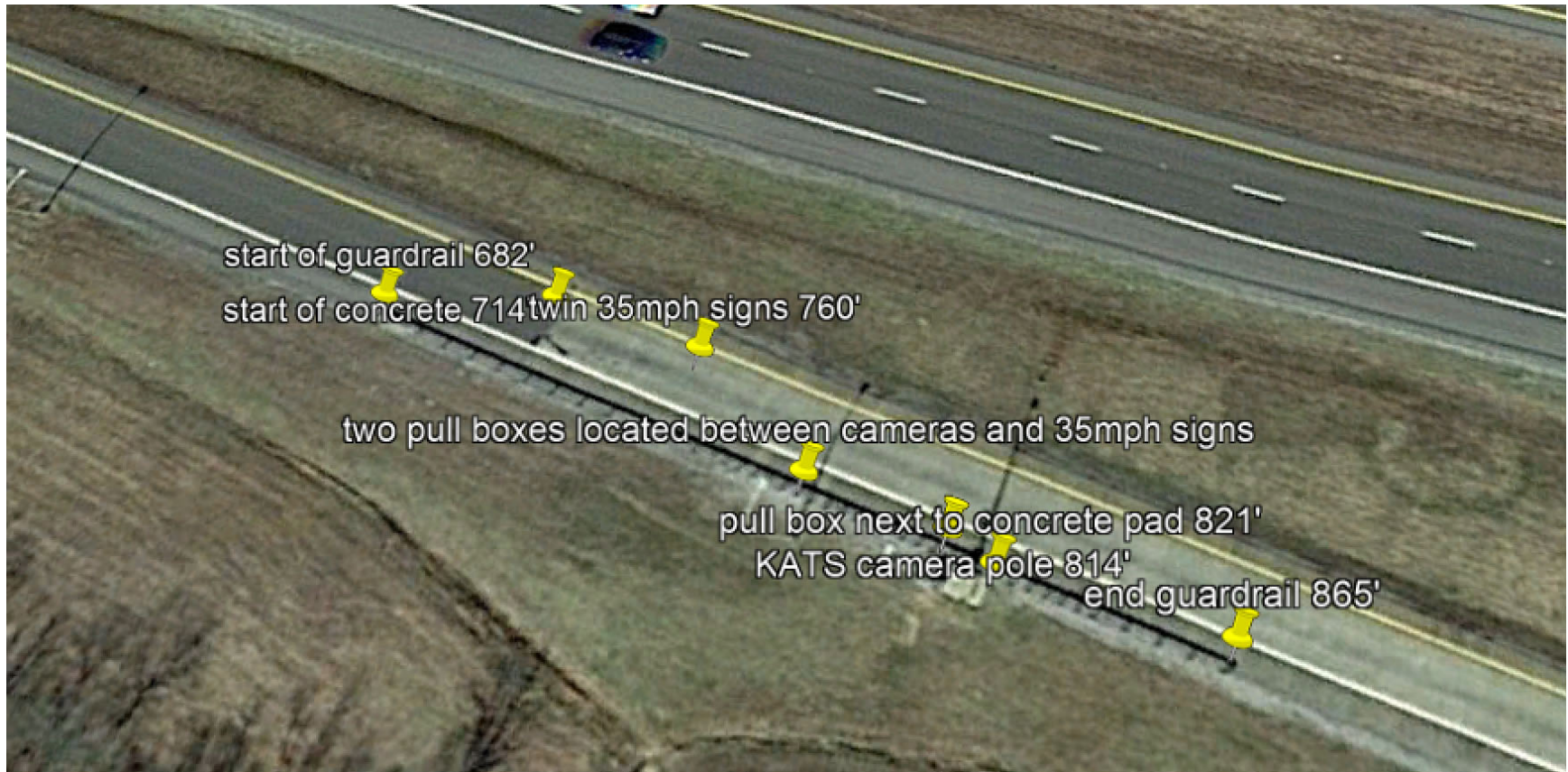


Figure 1. KATS Equipment on Ramp



**Inset B, Eastbound (EB)**



Figure 2. WIM Location on Ramp (1,072')

**Inset C, Eastbound (EB)**



Figure 3. Weigh Station Facility



## Eastbound Photos



Figure 4. Start of Guardrail at KATS Camera Pole



*Figure 5. End Guardrail and KATS Camera Pole*





Figure 6. Height Detector Poles and WIM



Figure 7. Parking Gantry View





*Figure 8. Ramp View toward Entrance*





Figure 9. Ramp View toward Facility





*Figure 10. WIM and Height Detector Cabinet*

**Lyon County Weigh Station, I-24 Westbound (WB)**



Location..... Interstate 24 @ MP 36,      Latitude: 37°03'41.90" N,      Longitude: 88°11'00.16" W  
Ramp Speed Limit.....35 mph  
Pavement Type.....Concrete (at WIM and near facility)  
Pavement Condition.....See attached photos  
Inset A diagram.....See page 13 (not to scale)  
Inset B diagram.....See page 14 (not to scale)  
Site Photos.....See pages 15-17



**Inset A, Westbound (WB)**

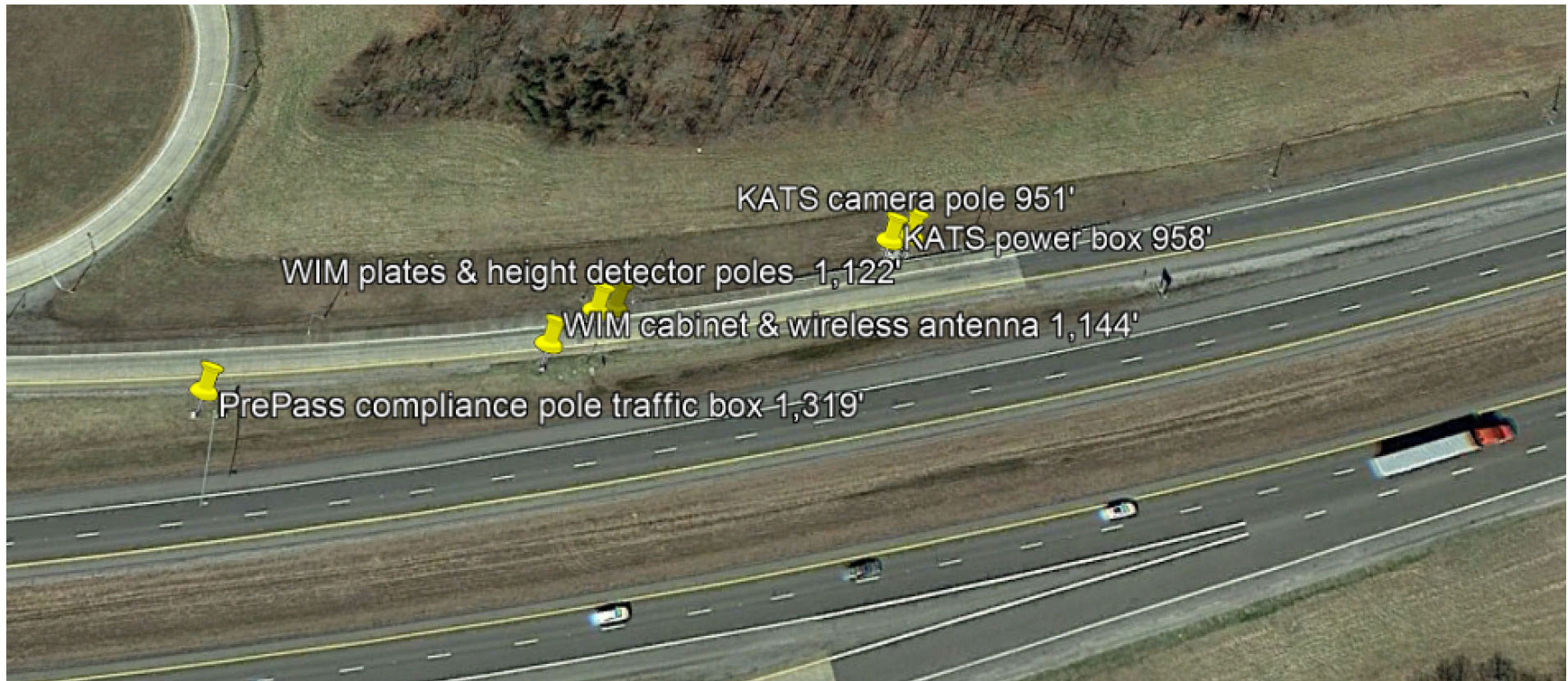


Figure 11. WIM Ramp

**Inset B, Westbound (WB)**



Figure 12. Weigh Station Facility



## Westbound Photos



*Figure 13. Start of Concrete and KATS Camera Pole*





*Figure 14. KATS Pole and Cabinet*





Figure 15. WIM and Height Detector/Cabinet