



UNIVERSITY OF KENTUCKY Purchasing Division

INVITATION FOR BIDS

CCK-2483-20

ADDENDUM # 2

09/18/2020

ATTENTION: This is not an order. Read all instructions, terms and conditions carefully.

IMPORTANT: BID AND ADDENDUM MUST BE RECEIVED BY 10/15/2020 @ 3:00 P.M. LEXINGTON, KY TIME

Bidder must acknowledge receipt of this and any addendum as stated in the Invitation for Bids.

1. The bid due date for CCK-2483-20 has changed. Bids are now due **October 15th, 2020**.
2. Subcontract 23B - Controls Package has been removed from bid package CCK-2483-20 and is being advertised separately under UK-2113-21 #2538.0 Construct Research Building #2 Phase 3 Design Release 1 - Fit-Out - CONTROLS. Proposals for UK-2113-21 are due October 6, 2020.
3. Pre-bid meeting presentation attached.

OFFICIAL APPROVAL
UNIVERSITY OF KENTUCKY

Procurement Manager / (859) 323-5405

SIGNATURE

Typed or Printed Name

University of Kentucky
Research Building #2
Phase 3 Fit Out
Pre-Bid Meeting

September 17th, 2020

UK
UNIVERSITY
OF KENTUCKY

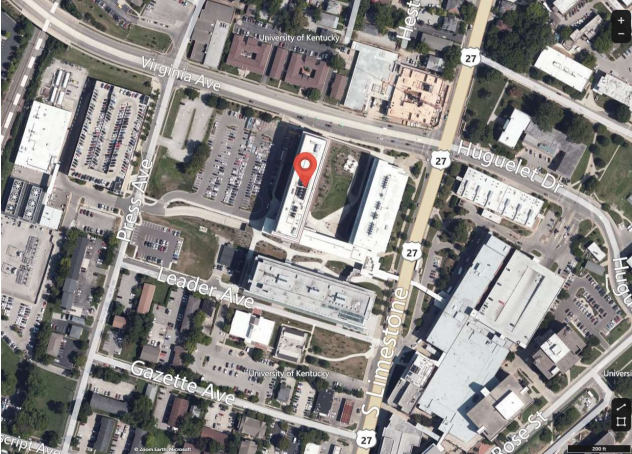
WT
WHITING-TURNER

1

Project Overview

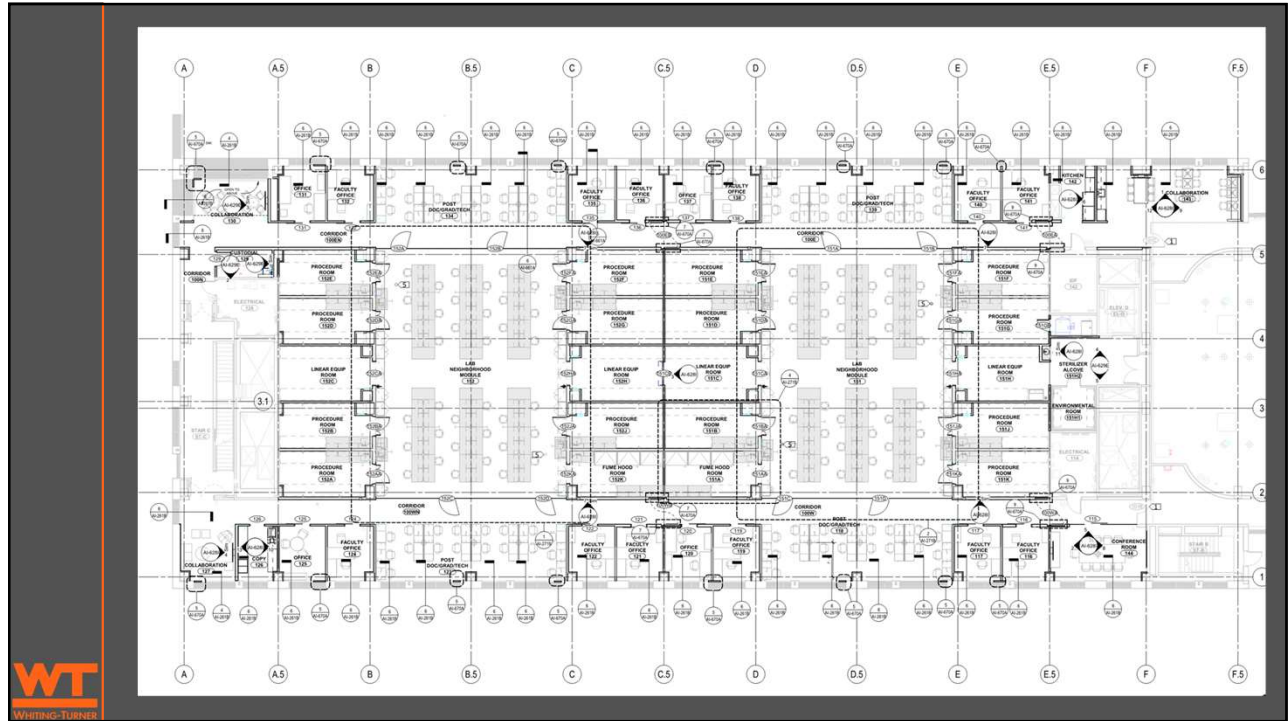
Project Location:
Healthy Kentucky
Research Building
760 Press Avenue
Lexington KY, 40508

Project Description:
Level 1 Fit-out of Two Wet
Labs - Approx. 18,000SF

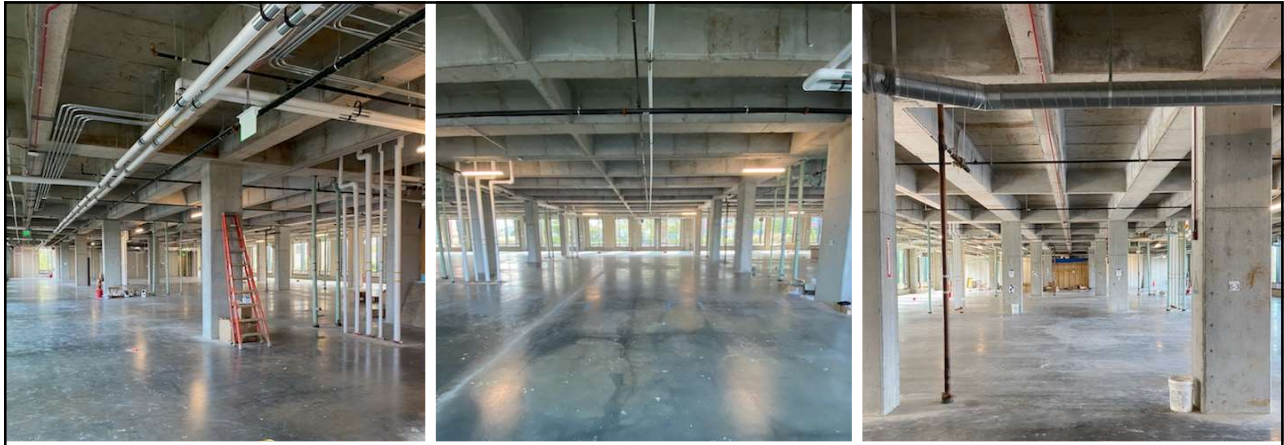


WT
WHITING-TURNER

2



3



Existing Photos



4



5

Schedule

Bids Due - October 6th, 2020

Construction Start Date - Late November 2020

In Wall Rough-in Complete - Early March 2021

Overhead Rough-in Complete - Early May 2021

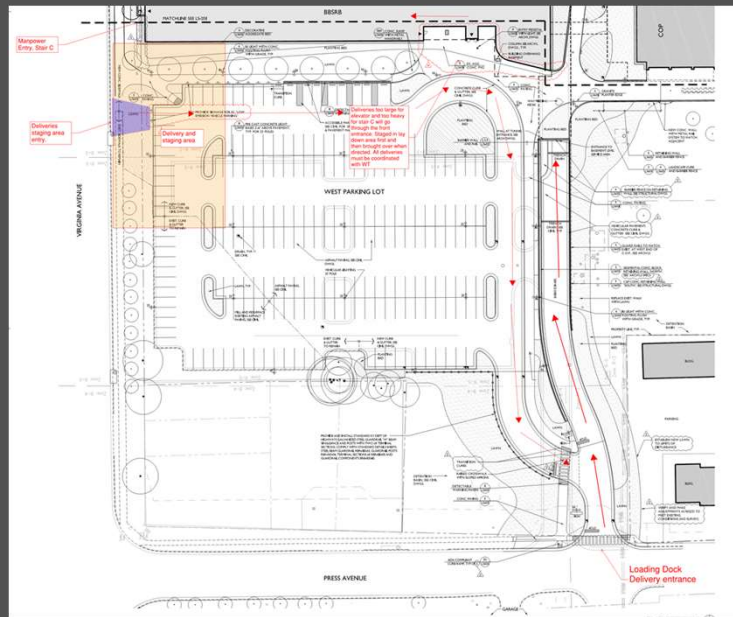
Project Completion - August 21st, 2021



6

Logistics Plan

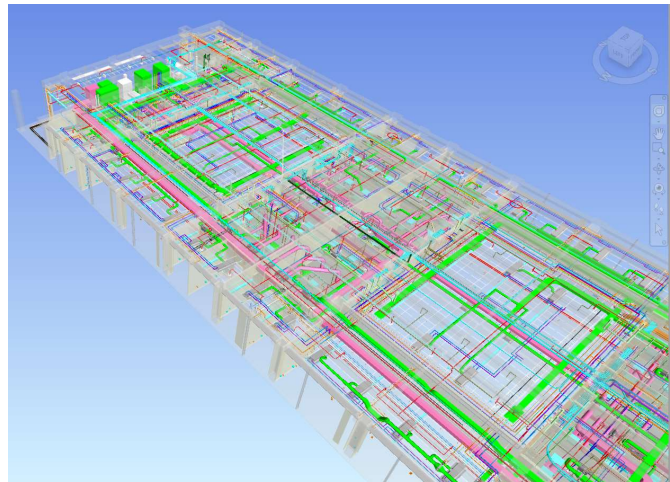
- Deliveries go through loading dock and up the freight elevator
- Oversized deliveries come through front door and coordinated with WT
- Manpower goes through stair C located on North side of the building
- **NO PARKING ONSITE**



7

BIM Coordination

- Laser Scan and modeling of existing MEPs completed
- MEP Subs to model their scope and coordinate with existing field conditions
- 23A to perform clash detection between all MEP models
- See BIM Coordination Plan for details



8

Safety

REQUIREMENTS

- All Subs
 - Site Specific Safety Plan
 - Silica Control Program
 - Designated Safety Director w/ weekly site visit and report
 - Safety Plans (AHA & PTP)
 - Onsite First Aid Kit and Spill Kit
 - COVID-19 Mitigation Plan
- Foreman/Competent Persons
 - OSHA 30
 - First Aid/CPR
- All Onsite Workers
 - OSHA 10
 - UK Badge

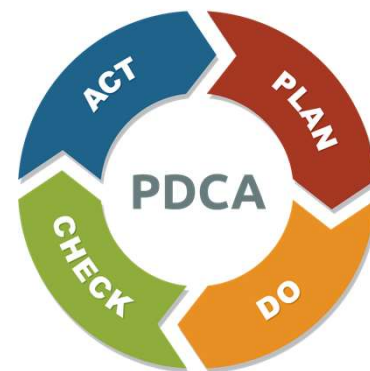


9

Quality Control

REQUIREMENTS

- Project specific Quality Control plan
- On site Quality Control Director
- Weekly QC's and walk throughs with reporting
- "Just in time" deliveries due to limited lay down area
- Collaboration/coordination with WT and other Subcontractors for deliveries and installation



10

Questions & Answers

